
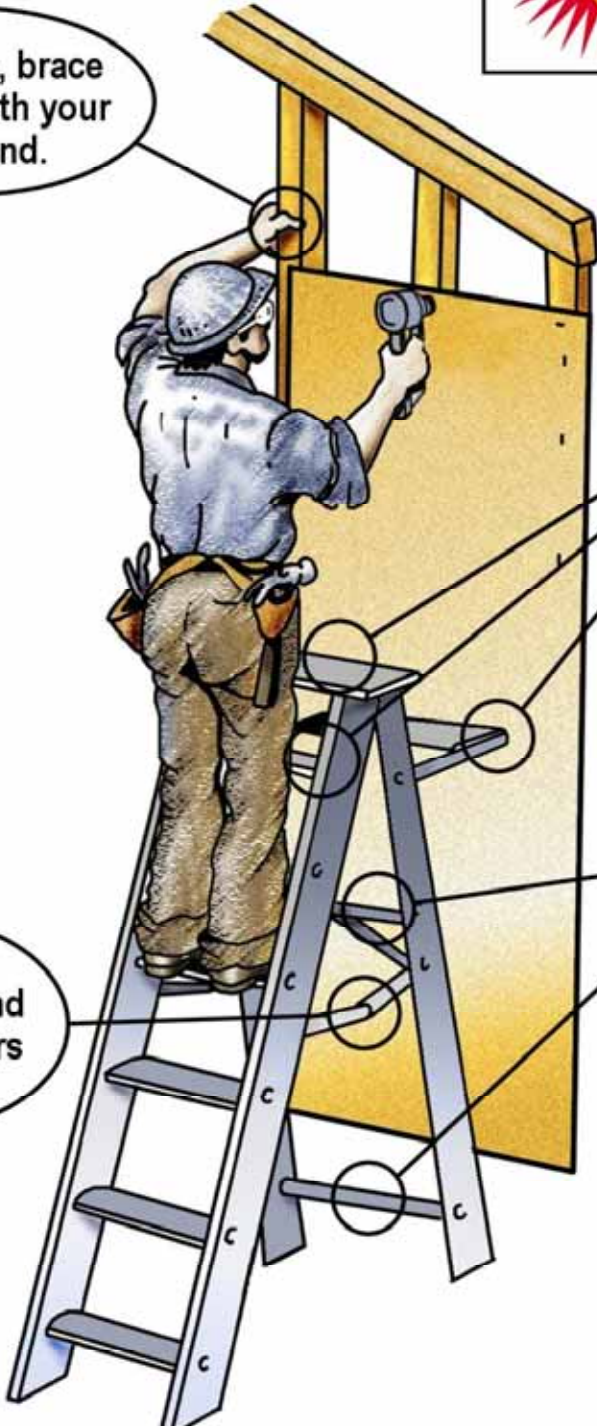


### Safety Tip 3: Stepladder Use

	Stepladders should <b>NEVER</b> be used folded up and leaning against a surface.
--	--

If possible, brace yourself with your free hand.



The top two steps and bucket shelf are not safe to stand on.

Climbing or standing on the rear part of the ladder can cause it to collapse or tip over.

Fully open stepladder and lock spreaders in place.