

# 2012 Pension Payment Calendar

## LEGEND

- 20 WorkSafeBC closed
- 20 Pension EFT/Direct Deposit
- 20 Pension Cheque

## EFT/DIRECT DEPOSIT

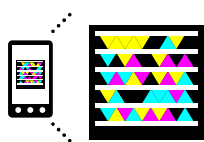
If you are registered for Electronic Funds Transfer (EFT) or Direct Deposit, your monthly pension payment will be made available to your bank for deposit by the **circled** dates.

## CHEQUE

If you are not registered for Electronic Funds Transfer (EFT) or Direct Deposit, your monthly pension cheque will be released to Canada Post on the **squared** dates. After our release date, the receipt of your cheque is subject to Canada Post service and processing time.

Enjoy the convenience of having your payments directly deposited into your bank account by completing the "Request for Direct Deposit in Canada" form and fax or mail it back to WorkSafeBC.

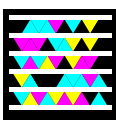
Download the form at:  
[www.worksafebc.com/forms/assets/pdf/19W1.pdf](http://www.worksafebc.com/forms/assets/pdf/19W1.pdf)



Get the free mobile app at  
<http://gettag.mobi>

Please click on this link for further information on Direct Deposit for workers:

[www.worksafebc.com/claims/worker\\_benefits/direct\\_deposit/default.asp](http://www.worksafebc.com/claims/worker_benefits/direct_deposit/default.asp)



## JANUARY

S	M	T	W	T	F	S
1	2	3	4	5	6	7
8	9	10	11	12	13	14
15	16	17	18	19	20	21
22	23	24	25	26	27	28
29	30	31				

## MARCH

S	M	T	W	T	F	S
				1	2	3
4	5	6	7	8	9	10
11	12	13	14	15	16	17
18	19	20	21	22	23	24
25	26	27	28	29	30	31

## MAY

S	M	T	W	T	F	S
		1	2	3	4	5
6	7	8	9	10	11	12
13	14	15	16	17	18	19
20	21	22	23	24	25	26
27	28	29	30	31		

## JULY

S	M	T	W	T	F	S
1	2	3	4	5	6	7
8	9	10	11	12	13	14
15	16	17	18	19	20	21
22	23	24	25	26	27	28
29	30	31				

## SEPTEMBER

S	M	T	W	T	F	S
						1
2	3	4	5	6	7	8
9	10	11	12	13	14	15
16	17	18	19	20	21	22
23	24	25	26	27	28	29
30						

## NOVEMBER

S	M	T	W	T	F	S
				1	2	3
4	5	6	7	8	9	10
11	12	13	14	15	16	17
18	19	20	21	22	23	24
25	26	27	28	29	30	

## FEBRUARY

S	M	T	W	T	F	S
			1	2	3	4
5	6	7	8	9	10	11
12	13	14	15	16	17	18
19	20	21	22	23	24	25
26	27	28	29			

## APRIL

S	M	T	W	T	F	S
1	2	3	4	5	6	7
8	9	10	11	12	13	14
15	16	17	18	19	20	21
22	23	24	25	26	27	28
29	30					

## JUNE

S	M	T	W	T	F	S
					1	2
3	4	5	6	7	8	9
10	11	12	13	14	15	16
17	18	19	20	21	22	23
24	25	26	27	28	29	30

## AUGUST

S	M	T	W	T	F	S
			1	2	3	4
5	6	7	8	9	10	11
12	13	14	15	16	17	18
19	20	21	22	23	24	25
26	27	28	29	30	31	

## OCTOBER

S	M	T	W	T	F	S
	1	2	3	4	5	6
7	8	9	10	11	12	13
14	15	16	17	18	19	20
21	22	23	24	25	26	27
28	29	30	31			

## DECEMBER — to be announced

S	M	T	W	T	F	S
						1
2	3	4	5	6	7	8
9	10	11	12	13	14	15
16	17	18	19	20	21	22
23	24	25	26	27	28	29
30	31					

Lower mainland: 604 231-8888 Toll-free  
phone: 1 888 967-5377  
Fax: 604 233-9777  
Toll-free fax: 1 888 922-8807

Website: [worksafebc.com](http://worksafebc.com)  
Mailing Address:  
PO Box 4700 Stn Terminal  
Vancouver, BC V6B 1J1