

OVERVIEW

TITLE: Automotive lifts with swing-arm restraints

Part 12, Tools, Machinery and Equipment
Section 12.80.2, Swing-arm restraints

1. WHAT IS THE NATURE OF THE PROBLEM TO BE SOLVED?

Section 12.80.2 of the Occupational Health and Safety Regulation (“OSHR”) requires all automotive lifts with swing-arms to have swing-arm restraints. This is different from the requirements in the equipment safety standard specified in section 12.74 of the OHSR that this equipment is required to meet. This is causing confusion in the industry. The Engineering staff at WorkSafeBC report handling an average of 20 inquiries per year on this topic. The intent of the provision is to require swing-arm restraints only for equipment styles as specified in the standard, which is for lifts that do not have the lift superstructure under the vehicle while it is on the lift.

2. WHAT IS THE PURPOSE OF THE PROPOSED AMENDMENTS?

The proposed amendments will change the wording of section 12.80.2 to limit the scope of the requirement for swing-arm restraints to equipment types as specified in the applicable equipment safety standard. This will correct the mistake in the current wording and eliminate the confusion among stakeholders. It is an issue for suppliers of automotive hoists and for employers who use this type of equipment. The solution is straightforward and there should be no implementation issues for stakeholders or WorkSafeBC.

3. SOURCE OF REQUEST

Automotive lift manufacturers
Automotive lift owners
WorkSafeBC Worker and Employer Services Division (Regulatory Practices)
WorkSafeBC Investigations Division (Engineering)

PART 12: TOOLS, MACHINERY AND EQUIPMENT

AUTOMOTIVE LIFTS AND OTHER VEHICLE SUPPORTS

Swing arm restraint	12.80.2	<p>(1) If an automotive lift has swing arms, a swing-arm pivot restraint system must be used.</p> <p>(2) The swing-arm pivot restraint system must incorporate a means to prevent unintentional removal or disengagement.</p> <p>(1) An automotive lift that has a frame engaging type superstructure must have swing arm pivot restraints if</p> <p>(a) no part of the rigid superstructure is under the raised vehicle, or</p> <p>(b) the lift has 2 or more superstructures and the clearance between the rigid parts of the superstructures on each side of the vehicle is 1.3 meters (51 inches) or more.</p> <p>(2) Swing arm pivot restraints required under subsection (1) must be designed and maintained to prevent unintentional removal or disengagement of the swing arm pivot restraints when a vehicle is being supported by the automotive lift.</p>
---------------------	---------	------------------------------------------------------------------------------------------------------------------------------------------------------------------------------------------------------------------------------------------------------------------------------------------------------------------------------------------------------------------------------------------------------------------------------------------------------------------------------------------------------------------------------------------------------------------------------------------------------------------------------------------------------------------------------------------------------------------------------------------------------------------------------------------------------------------------------------------------------------------------------------------------------------------------

Explanatory Note:

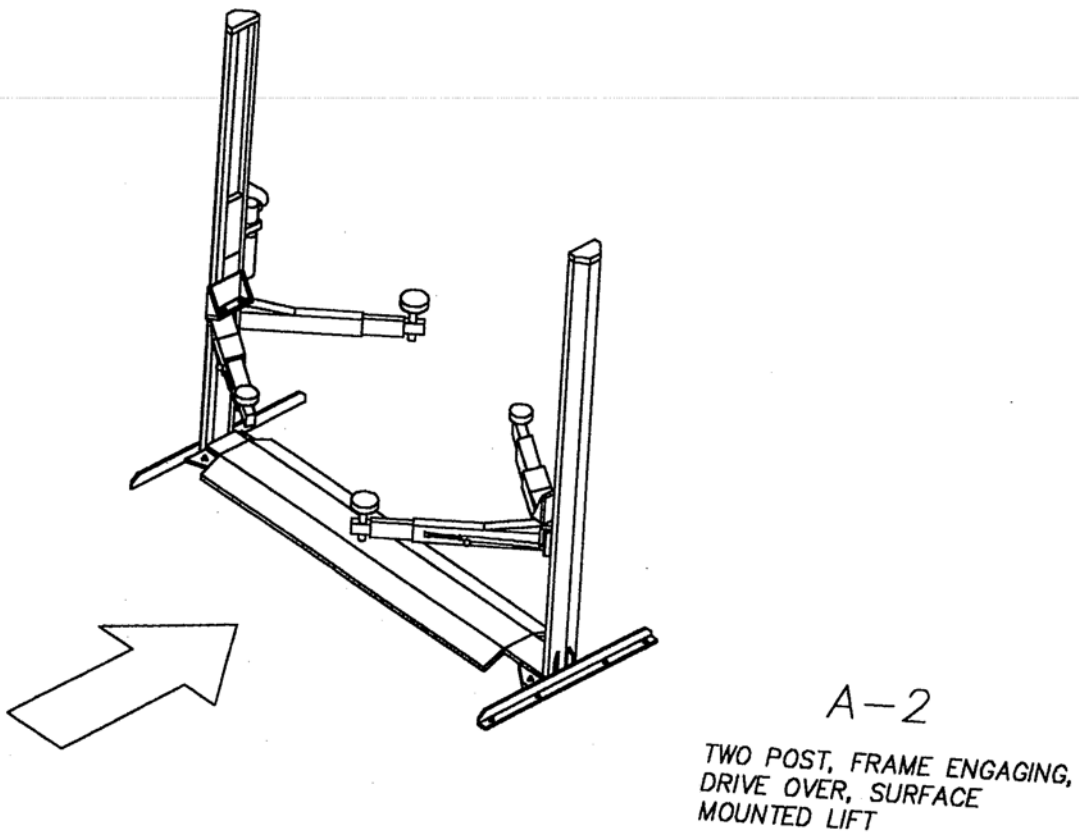
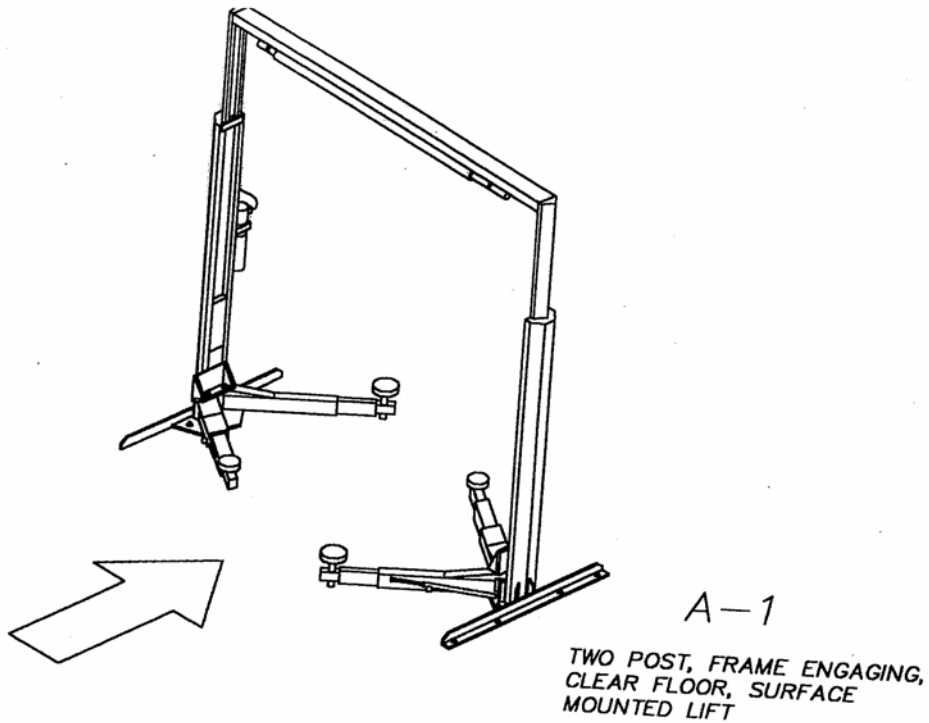
Section 12.80.2 of the Occupational Health and Safety Regulation (“OSHR”) requires all automotive lifts with swing arms to have swing arm restraints. This is different from the requirements in the equipment safety standard specified in section 12.74 of the OHSR that this equipment is required to meet. This is causing confusion in the industry. The intent of the section is to require swing arm restraints only for equipment styles as specified in the referenced safety standard, which is for lifts that do not have all or part of the rigid superstructure of the lift under the vehicle while the vehicle is supported on the lift.

The *ANSI Standard ANSI/ALI ALCTV-1998, American National Standard for Automotive Lifts – Safety Requirements for Construction, Testing and Validation*, defines “superstructure” as “the vehicle support structure that is connected to the lifting means.” The superstructure will have rigid components and may have adjustable components. The rigid superstructure means the part of the superstructure that is connected to the lifting means and has no adjustable parts. The adjustable superstructure means components such as swing arms or telescoping members that are positioned by the lift user to allow the lift contact points to engage the appropriate lifting points on the underside of the vehicle.

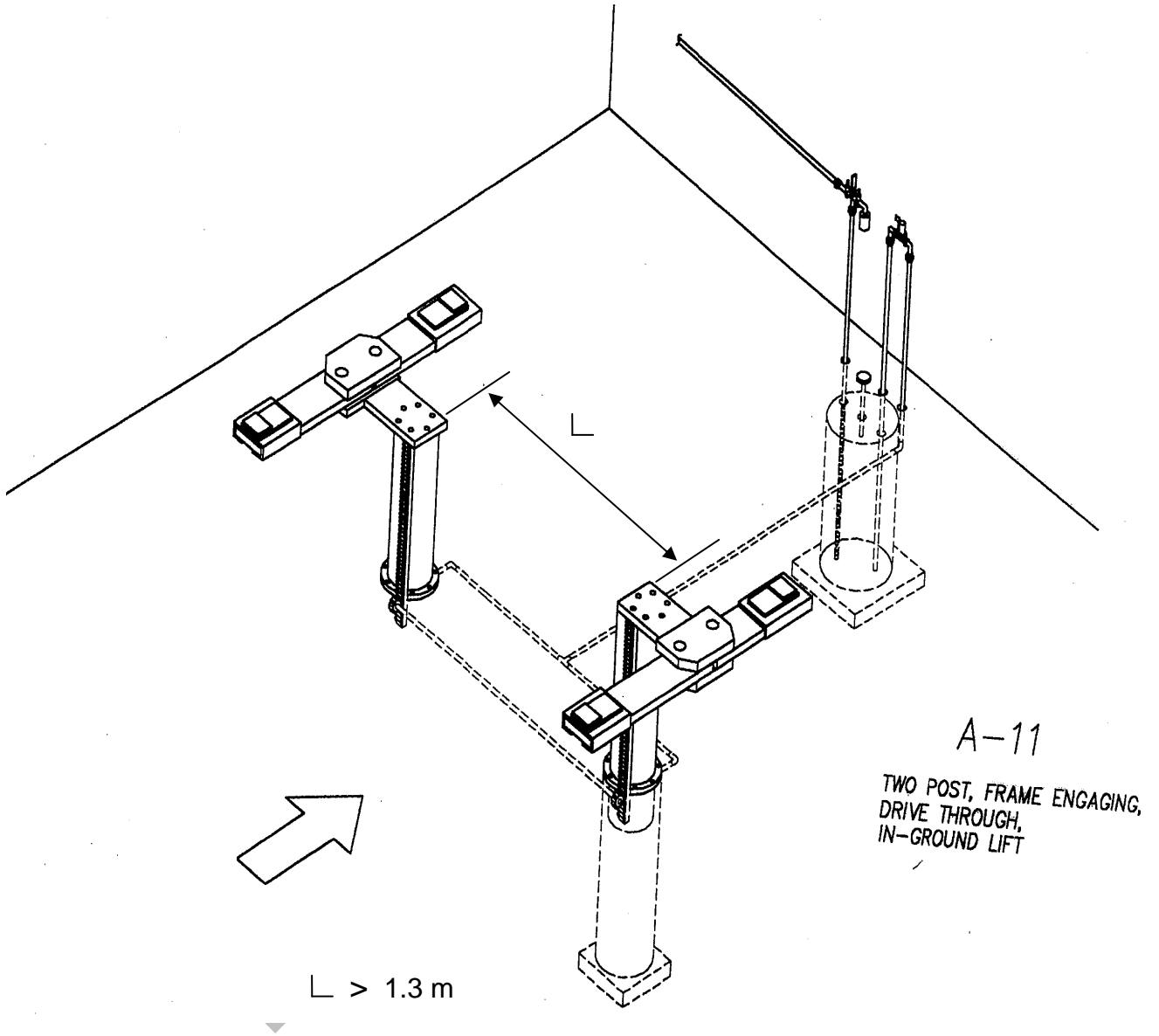
The proposed amendment changes the wording of section 12.80.2 to limit the scope of the requirement for swing arm pivot restraints to equipment types as specified in the applicable equipment safety standard. This change is driven by a lack of clarity in the regulatory wording, and is an issue for suppliers of automotive hoists and for employers who use this type of equipment.

PROPOSED AMENDMENTS FOR PART 12: TOOLS, MACHINERY AND EQUIPMENT
IN THE OCCUPATIONAL HEALTH AND SAFETY REGULATION

The following 3 illustrations from *ANSI Standard ANSI/ALI ALCTV-1998 American National Standard for Automotive Lifts – Safety Requirements for Construction, Testing and Validation* show lift configurations which typically require swing arm pivot restraint devices.

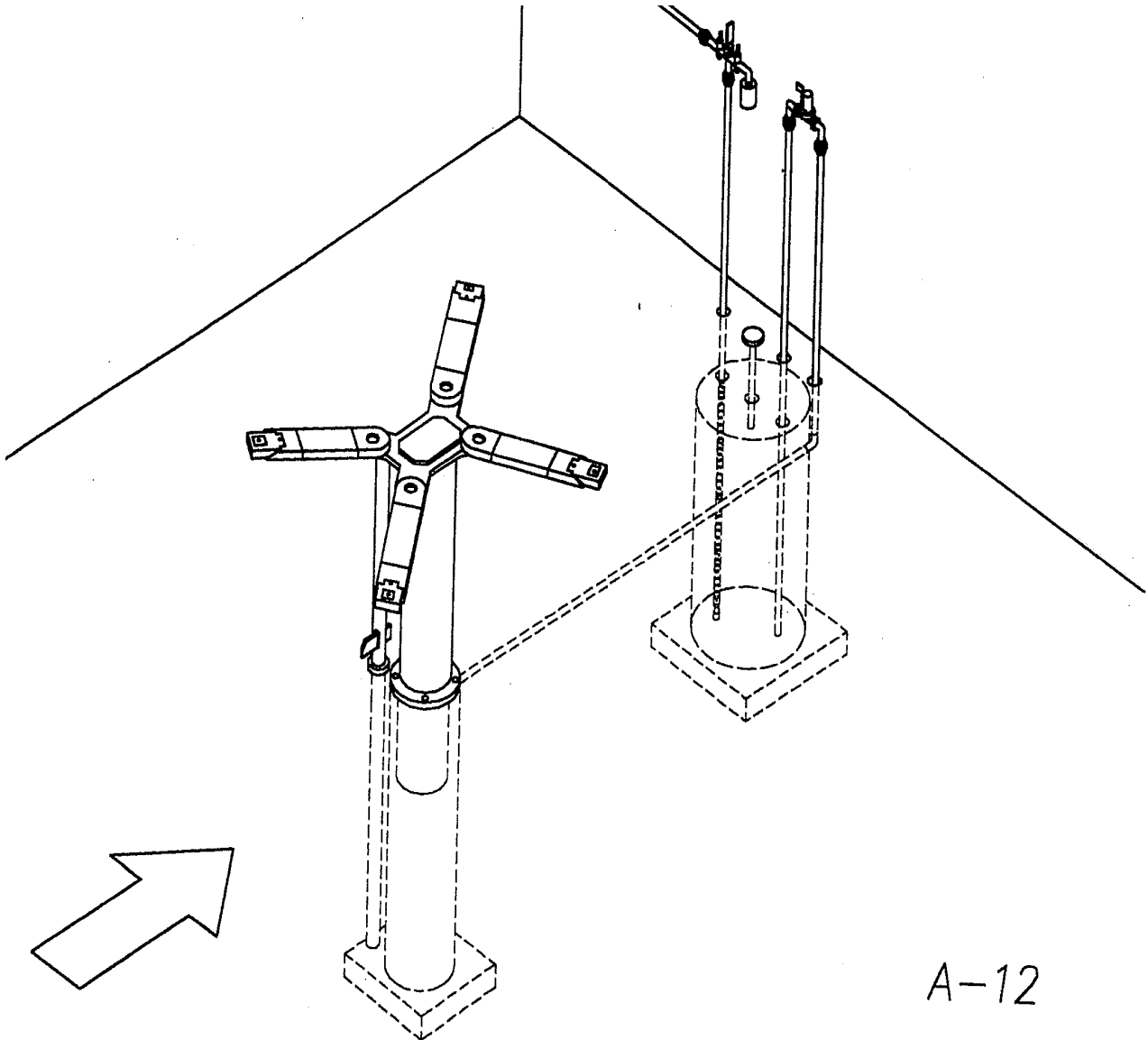


PROPOSED AMENDMENTS FOR PART 12: TOOLS, MACHINERY AND EQUIPMENT
IN THE OCCUPATIONAL HEALTH AND SAFETY REGULATION



PROPOSED AMENDMENTS FOR PART 12: TOOLS, MACHINERY AND EQUIPMENT
IN THE OCCUPATIONAL HEALTH AND SAFETY REGULATION

The following illustration from *ANSI Standard ANSI/ALI ALCTV-1998 American National Standard for Automotive Lifts – Safety Requirements for Construction, Testing and Validation* shows a lift configuration which typically **does not** require swing arm pivot restraint devices.



SINGLE POST, FRAME ENGAGING,
IN-GROUND LIFT