

Statistics 2003

Solid
Forward-Thinking
Value Adding

WorkSafeTM

WORKERS' COMPENSATION BOARD OF BC

www.WorkSafebc.com

Introduction

This report on statistics is published annually as a complement to the operational and financial reviews covered in the annual report of the Workers' Compensation Board of B.C.

WCB Statistics 2003 contains statistics on three key areas of operation: claims, assessments, and prevention. This information provides both a general overview of the workers' compensation system, and trends of key statistical indicators. To allow for valid comparisons, the format of the tables and exhibits have been kept as consistent as possible with those used in previous editions of this report.

In February 2000, the Workers' Compensation Board revised the system it uses to classify employers into classes and subclasses of industry. For administrative purposes, the revised classes are now known as sectors, and the revised subclasses are now known as subsectors. When the new classification structure was introduced, historical records were converted to the new structure. It is therefore possible in *WCB Statistics 2003* to publish statistical time series on a subsector basis.

There are a series of tables presented by subsector in *WCB Statistics 2003* that were presented by subclass in *Statistics 1999* and prior publications. These tables are: Table A-1 (number of claims first paid in 2003 by subsector and type of claim); Table A-1 — Historical by Subsector; Table A-1 — Number of Fatalities (10-year count of fatal claims by subsector); Table A-2 (claim costs in 2003 by subsector and type of claim); Table B-1 (days lost and accident type by subsector); and Table B-2 (injury rate and claim durations by subsector). The "Classes of Industry" section, starting on page 54, lists the types of industrial activities that make up each subsector.

Since the introduction of the new classification system, a number of employers have been reclassified into new subsectors. In *WCB Statistics 2003*, the experience of these employers prior to their reclassification is tabulated in the subsectors the employers were originally assigned to, and the experience of these employers following their reclassifications is tabulated in the subsectors they have been reclassified into. The exceptions to this are Table A-1, Number of Fatalities, and the injury rates in Table B-2. These statistics have been re-stated and put on the "reclassified" basis for all years. The impact of the reclassifications is very minor at the subsector level.

The method used to calculate claim duration by subsector in Table B-2 has been revised. Durations for all years shown in Table B-2 have been put on the new basis.

This report is available on the WCB WorkSafe™ Online website at www.WorkSafebc.com by following path: publications/reports/statistics_reports. The publications *Occupational Injuries by Accident Type and Occupation in British Columbia, 1998–2002* and *Occupational Diseases in British Columbia 1983–2002* are also available in that area of the website. Abstracts of reports published by Statistical Services are also available in that same area.

For more detailed statistics on specific topics, contact the WCB Statistical Services Department at 604 276-3130, or send your information request by fax to 604 276-3290.

Contents

Claim Statistics

Reported Claims	4	Number of Claims First Paid in 2003 Analyzed by Subsector and Type of Claim (Table A-1)	18
Deaths Occurring in 2003 and Reported by February 20, 2004	5	Number of Claims First Paid in 1994–2003 Analyzed by Type of Claim (Table A-1 – Historical by Claim Type)	21
Claims Accepted for Fatal Benefits in 2003 According to Agency with Inspectional Jurisdiction	6	Total of Health-care-only, Short-term Disability, Long-term Disability, and Fatal Claims First Paid in the Year, by Subsector, for 2002 and 2003 (Table A-1 – Historical by Subsector)	22
Claims Accepted for Fatal Benefits, 1994–2003, by Category of Injury or Disease	7	Number of Claims Accepted for Fatal Benefits by Subsector and Year Accepted (Table A-1 – Number of Fatalities)	25
Number and Costs of Claims	8	Claims Accepted for Fatal Benefits in 2003 (Table A-1 – Fatality Descriptions)	28
Distribution by Type of Claim	8	Claim Costs Charged in 2003 by Subsector and Type of Claim (Claims from All Years) (Table A-2)	38
The Total Number of Work Injuries Reported and the Total Number of Short-term Disability, Long-term Disability, and Fatal Claims First Paid During Each of the Years 1994–2003	9	Claim Costs Charged in 1994–2003 by Type of Claim (Claims from All Years) (Table A-2 – Historical)	41
Compensation Cost by Type of Benefit	10	An Analysis by Subsector of the 58,834 Short-term Disability, Long-term Disability, and Fatal Claims First Paid in 2003 and an Analysis of the Number of Days Lost During 2003 on Claims for All Years (Table B-1)	42
Compensation Cost by Type of Claim	10	Days Lost, Average Weekly Wage, Average Age, and Breakdown by Gender for Short-term Disability, Long-term Disability, and Fatal Claims, 1994–2003 (Table B-1 – Historical)	46
Key Indicators in <i>WCB Statistics 2003</i>	11		
Days Lost From Work	14		
Percentage of Injuries by Gender of Worker	15		
Number of Claims and Claim Costs by Provincial Regional District for 2003	16		

Injury Rates and Relief-adjusted Short-term Disability (STD) Durations for Rateable Subsectors, 1999–2003 (Table B-2)	47
An Analysis by Year of Injury of the Total Days Lost During 2003 and the Number of Short-term Disability, Long-term Disability, and Fatal Claims First Paid in 2003 (Table C)	49
An Analysis by Sector of Industry, Gender, and Age Group of the Short-term Disability, Long-term Disability, and Fatal Claims First Paid in 2003 (Table D)	51
An Analysis by Injury of the Short-term Disability, Long-term Disability, and Fatal Claims First Paid, 1999–2003 (Table E)	52
Back Strain Claims (Excluding Health-care-only Claims) Paid for the First Time During 1994–2003 (Table F)	53

Assessment Statistics

Classes of Industry	54
Assessment Statistics (Rateable Employers)	67

Prevention Statistics

Breakdown of Field Officers' Worksite Time	68
Prevention Division — Field Officers' Time	69
Prevention Division Call Centre — Number of Calls Received	70
Occupational Hygiene Technical Services	71
Compliance and Investigation Activity	71

Ordering Information

Claim Statistics

Reported Claims

The number of claims reported to the WCB in 2003 was 154,443 — a 3.1 percent decrease from the 159,372 claims reported in 2002.

Year	New Injuries Reported in the Year	Fatalities that Occurred in the Year and were Reported to the WCB by Feb 20 of the Following Year	Fatalities as a Percentage of New Injuries
1994	197,911	199	0.10%
1995	194,280	200	0.10%
1996	189,418	182	0.10%
1997	185,852	195	0.10%
1998	179,582	158	0.09%
1999	178,187	179	0.10%
2000	184,131	186	0.10%
2001	172,103	193	0.11%
2002	159,372	232	0.15%
2003	154,443	219	0.14%

First payment was made for 170 occupational deaths in 2003. Twenty-six of the 170 cases were pensioners who died from causes related to their compensable injuries or diseases. The 170 fatal claims first paid in 2003 cannot be compared to the 219 fatalities in the above chart because some of the fatalities first paid in 2003 occurred in and were reported in a prior year, and because some of the reported fatalities are not compensable. The 219 fatal claims tabulated in the above chart are broken down in the table on the opposite page. The 170 fatal claims first paid in 2003 are broken down by subsector in Table A-1.

Deaths Occurring in 2003 and Reported by February 20, 2004¹

	Adjudication Completed by February 20, 2004			Awaiting Adjudication or Application ² at February 20, 2004	Total Deaths Occurring in 2003 and Reported by February 20, 2004
	Accepted	Disallowed ³	Rejected ⁴		
Motor Vehicle Accidents	35	3	1	5	44
Other Injuries	52	1	1	18	72
Asbestos Exposure	50	1	0	0	51
Other Diseases	12	21	0	19	52
TOTAL	149	26	2	42	219

¹ There were seven deaths that occurred in 2002 but were not included in last year's table; they were reported to the WCB after February 25, 2003. All the deaths in the above table occurred in 2003, but some of the accidents leading to the deaths occurred prior to 2003.

² Claims awaiting application typically involve cases where the deceased's relatives elect to sue a third party rather than claim compensation.

³ Disallowed claims are those that are judged to be not work related.

⁴ Rejected claims are those where the worker did not have WCB coverage. They were included in the "Awaiting Adjudication" column in previous versions of this table.

Claims Accepted for Fatal Benefits in 2003 According to Agency¹ with Inspectional Jurisdiction

	Workers' Compensation Board (Includes "Close-to-Shore" Fishing Fatalities) ²	Ministry of Mines	RCMP/Other Police		Transport Canada	Ministry of Transportation and Highways	Human Resources Devt. Canada Labour Program	Death Occurred Outside British Columbia	All Agencies
			Motor Vehicle Accidents	Other					
MVA — Same Year ³	6	1	20	-	-	1	-	2	30
MVA — Prior Year ³	-	-	5	-	-	-	-	1	6
Other Injury — Same Year ³	39	-	-	-	7	-	1	-	47
Other Injury — Prior Year ³	11	-	-	3	1	-	1	-	16
Asbestos Exposure	48	2	-	-	-	-	3	-	53
Other Disease	16	1	-	-	-	-	1	-	18
TOTAL	120	4	25	3	8	1	6	3	170

¹ This classification according to agency is done by the WCB.

² As of January 1, 1995, the WCB assumed inspectional jurisdiction of "Close-to-Shore" Fishing Fatalities.

³ "Same Year" means that the accident that led to the fatality occurred in the same year the claim was accepted; "Prior Year" means that the accident that led to the fatality occurred in a year prior to the year in which the claim was accepted.

Claims Accepted for Fatal Benefits, 1994–2003, by Category of Injury or Disease

Category ¹ of Injury or Disease	Year Accepted										1994– 2003
	1994	1995	1996	1997	1998	1999	2000	2001	2002	2003	
MVA — Same Year	24	20	18	19	13	11	31	24	34	30	224
MVA — Prior Year	15	5	6	16	5	17	10	17	7	6	104
Other Injury — Same Year	56	54	53	70	30	43	41	52	45	47	491
Other Injury — Prior Year	21	18	29	14	25	21	16	17	15	16	192
Asbestos Exposure	20	22	35	26	29	34	35	39	42	53	335
Other Disease	16	15	11	19	23	21	23	19	14	18	179
TOTAL	152	134	152	164	125	147	156	168	157	170	1,525

¹ “Same Year” means that the accident that led to the fatality occurred in the same year the claim was accepted; “Prior Year” means that the accident that led to the fatality occurred in a year prior to the year in which the claim was accepted.

Number and Costs of Claims

During the year 2003, 120,470 claims were paid for the first time. Of those:

- 61,636 were health-care-only claims (formerly called medical-aid-only claims)
- 53,372 were short-term disability claims (formerly called wage-loss claims)
- 5,292 were long-term disability claims (formerly called permanent disability claims)
- 170 were fatal claims

In 2003, the WCB set aside \$1,106,891 in capitalized values of pension awards for long-term disability benefits on hearing-loss claims.

Compensation costs totalled \$908,353,308 in 2003, compared to \$930,289,332 in 2002. The figures include health care benefits, vocational rehabilitation benefits, short-term disability benefits, and capitalized values of pension awards, which are reserves set aside for present and future payments of long-term disability benefits and survivor benefits. The 2003 figure excludes the \$597,128 increase in widows' pension entitlement as ruled by the B.C. Supreme Court, and the 2002 figure excludes \$1,119,936 for that reason. The benefit liabilities figures shown in Note 7 of the *WCB 2003 Annual Report* are calculated on a different basis and are not comparable to these total compensation costs.

Distribution by Type of Claim

	2003		2002	
	Cost	% of Total	Cost	% of Total
Health-care-only Claims	\$27,538,295	3.0%	\$28,430,866	3.1%
Short-term Disability Claims ¹	\$344,154,680	37.9%	\$401,973,176	43.2%
Long-term Disability Claims ²	\$503,359,761	55.4%	\$464,108,071	49.9%
Fatal Claims	\$33,300,572	3.7%	\$35,777,219	3.8%
TOTAL³	\$908,353,308⁴	100.0%	\$930,289,332⁴	100.0%

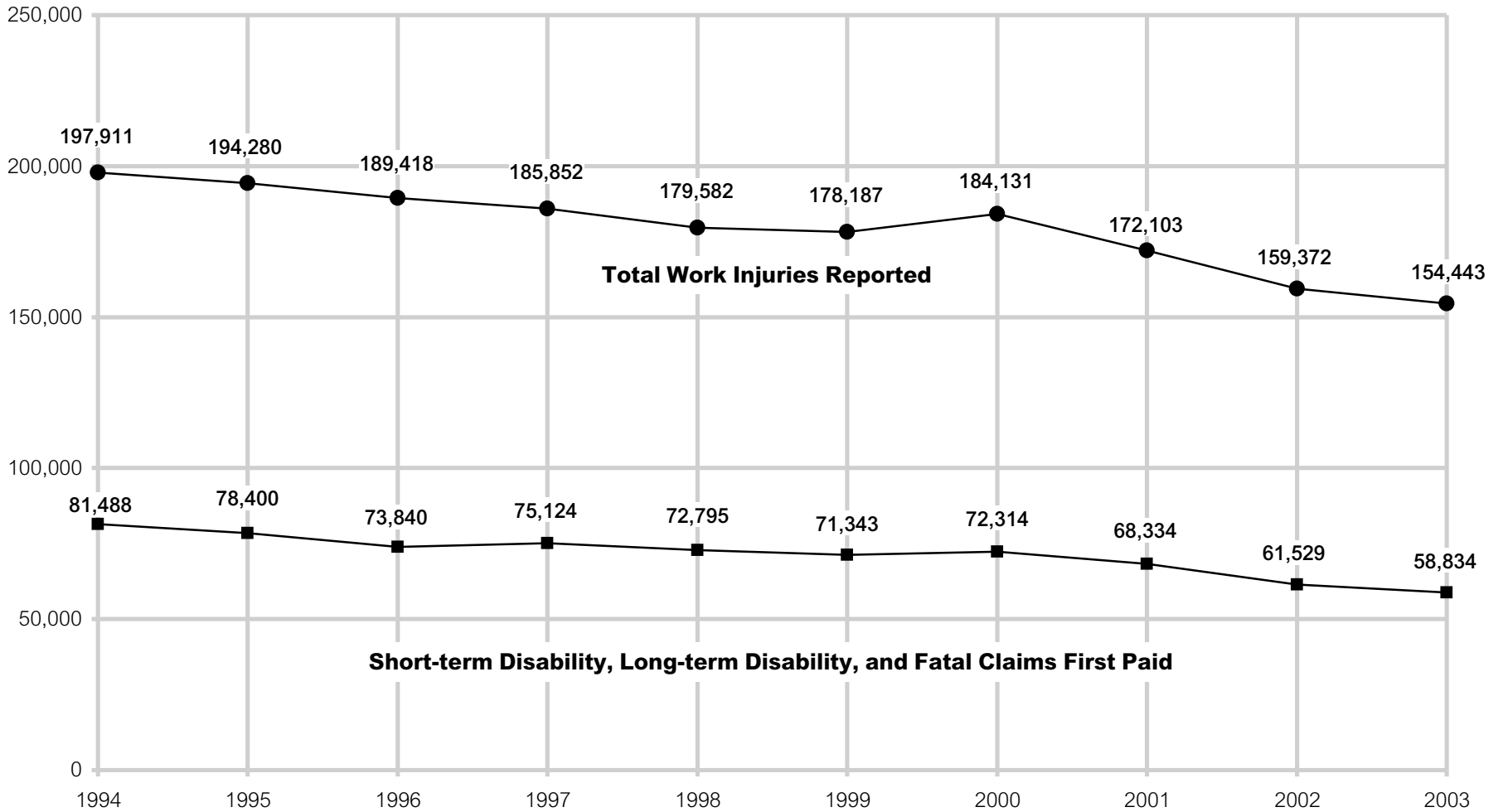
¹ Includes health care benefits paid on these claims.

² Includes health care and short-term disability benefits paid on these claims.

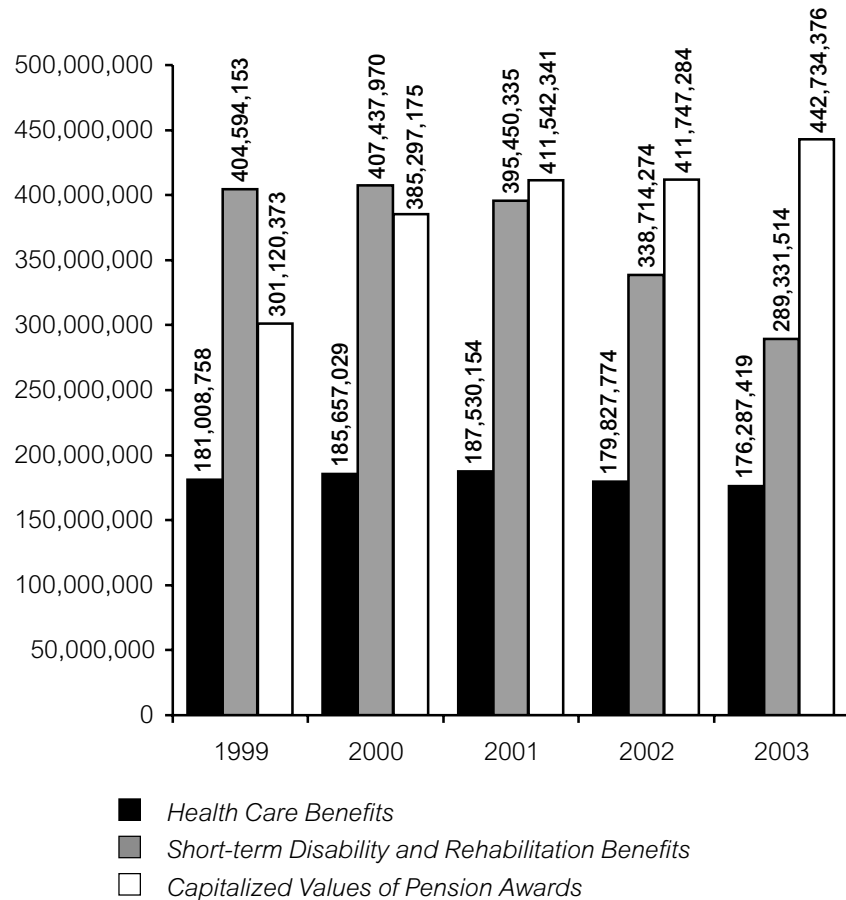
³ Due to rounding, totals may not balance.

⁴ The total cost of \$908,353,308 was calculated on a different basis than the total claim liability figure in Note 7 of the *WCB 2003 Annual Report*. Both the 2002 and 2003 cost totals exclude the increase in widows' pension entitlement arising from Bill 63 and the 1997 B.C. Supreme Court decision. A subsector breakdown of claim costs is provided in Table A-2 of this report.

The Total Number of Work Injuries Reported and the Total Number of Short-term Disability, Long-term Disability, and Fatal Claims First Paid During Each of the Years 1994–2003

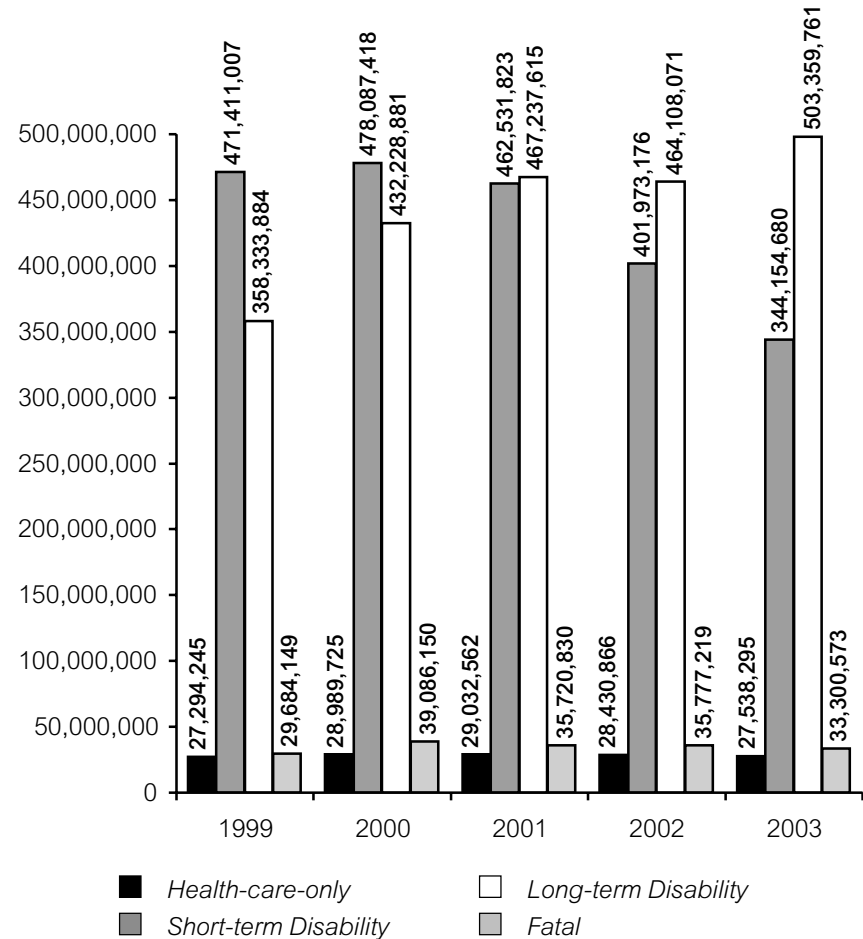


Compensation Cost by Type of Benefit



1999, 2000, 2001, 2002, and 2003 Capitalized Values of Pension Awards exclude the increase in widows' entitlement arising from Bill 63 and the 1997 B.C. Supreme Court decision.

Compensation Cost by Type of Claim



1999, 2000, 2001, 2002, and 2003 fatal costs exclude the increase in widows' entitlement arising from Bill 63 and the 1997 B.C. Supreme Court decision.

Key Indicators in *WCB Statistics 2003*

This series of charts of 10-year trends of statistical indicators first appeared in the *WCB 1992 Statistics* report. Although none of the indicators has changed dramatically from one year to the next, over the last 10 years there have been some significant trends.

The first chart shows claim duration as measured in days per claim. Five components of duration are shown on the chart: days paid per claim in the injury year, and days paid per claim in each of the four years following the injury year. This is the Association of Workers' Compensation Boards of Canada (AWCBC) recommended method of showing duration that Canadian compensation systems have adopted as a standard. The chart indicates that duration has increased since 1996, but turned down in 2000.

The durations in the first chart are based solely on short-term disability (STD) days. In previous years, the durations were based on STD days and some vocational rehabilitation days.

The second chart shows that one of the WCB's most important statistical indicators — the injury rate — has declined steadily since 1994. The injury rate is the number of claims per 100 person-years of covered employment (100 person-years is equivalent to 100 full-time employees). For the purpose

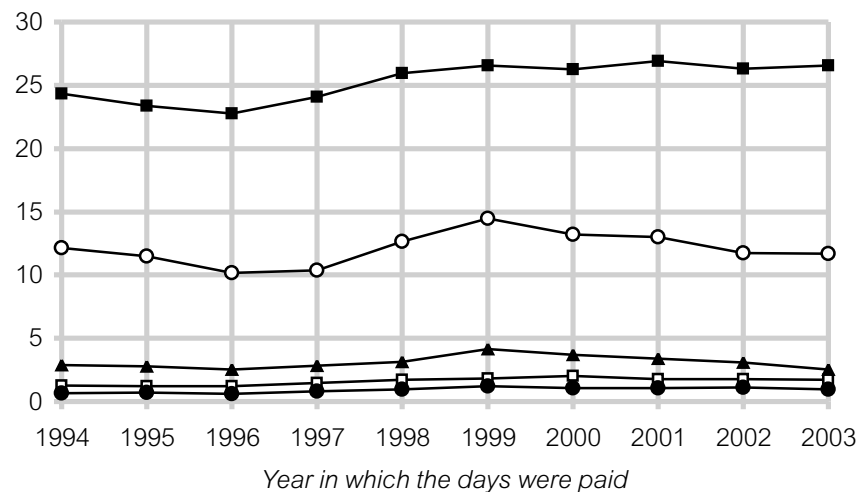
of the injury rate calculation, the number of claims is the number of claims accepted for short-term disability, long-term disability, or survivor benefits either in the year of injury or in the first quarter of the following year. The estimates of person-years are based on gross payrolls that covered employers report to the Board.

The third indicator — the fatality rate — is related to the second indicator. The fatality rate is the number of accepted fatal claims per 100 person-years of covered employment. The fatality rate has been relatively unchanged over the last ten years.

The fourth chart shows the percentage of short-term disability claims represented by claimants whose injuries were back strains. Back strains have accounted for approximately 25 percent of all short-term disability claims for each year in the past 10 years. It is the type of injury the WCB sees most often.

The last two charts reflect shifts in the population of covered workers. The fifth chart shows that the percentage of female claimants has increased from 25 percent in 1994 to 30 percent in 2003. The sixth chart shows that the percentage of claimants younger than 25 years of age has decreased from 18 percent in 1994 to 15 percent in 2003.

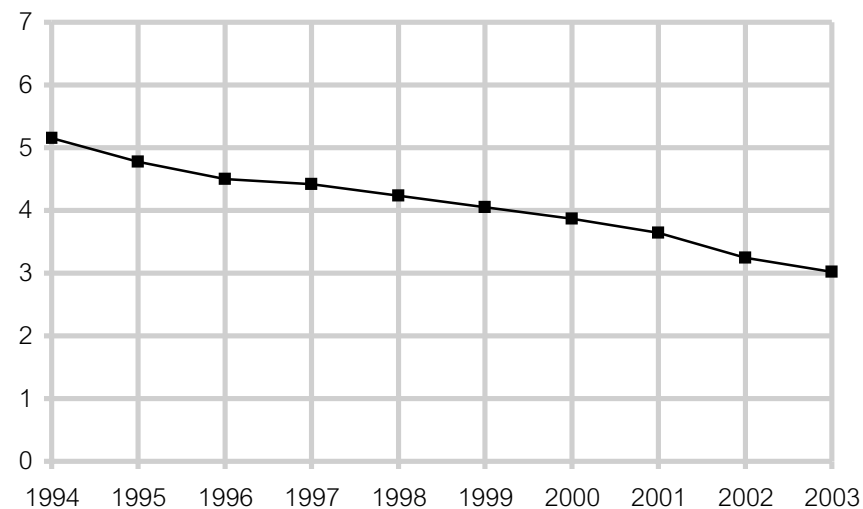
Number of days paid per claim



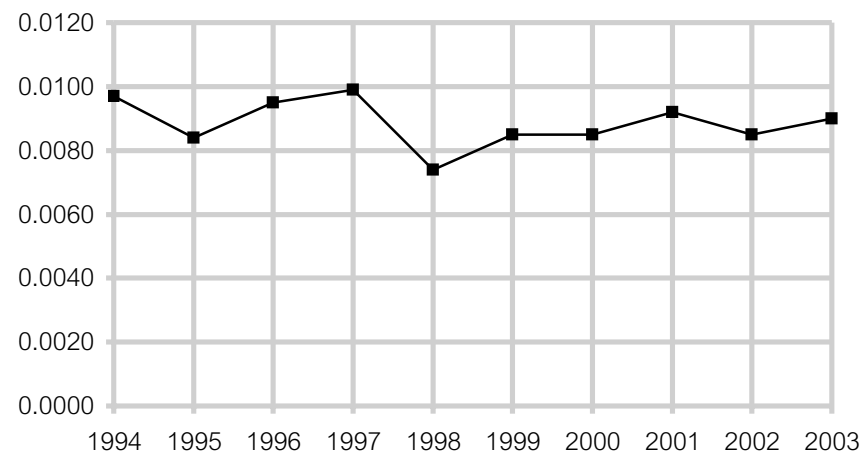
- Days paid per claim in the injury year
- Days paid per claim in the first year after the injury year
- ▲ Days paid per claim in the second year after the injury year
- Days paid per claim in the third year after the injury year
- Days paid per claim in the fourth year after the injury year

Injury rate (number of claims per 100 person-years of WCB-covered employment)

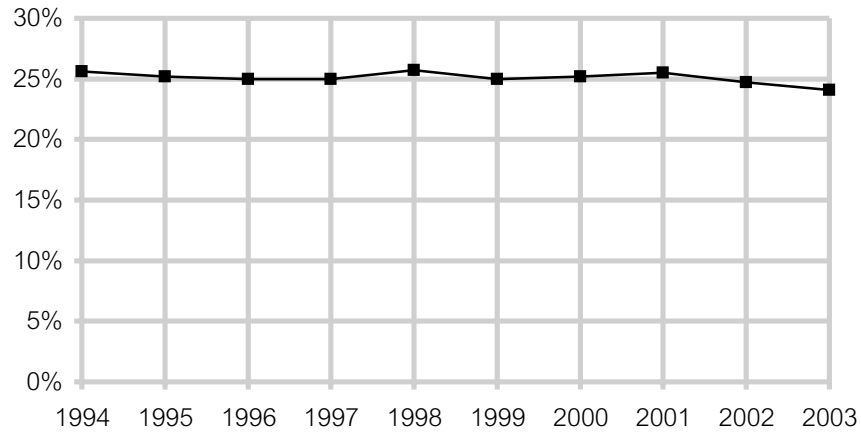
See footnote 1, Table B-2.
The injury rate is on the revised AWCBC basis "rated employers only" for all years.



Fatality rate (number of accepted fatal claims per 100 person-years of WCB-covered employment)

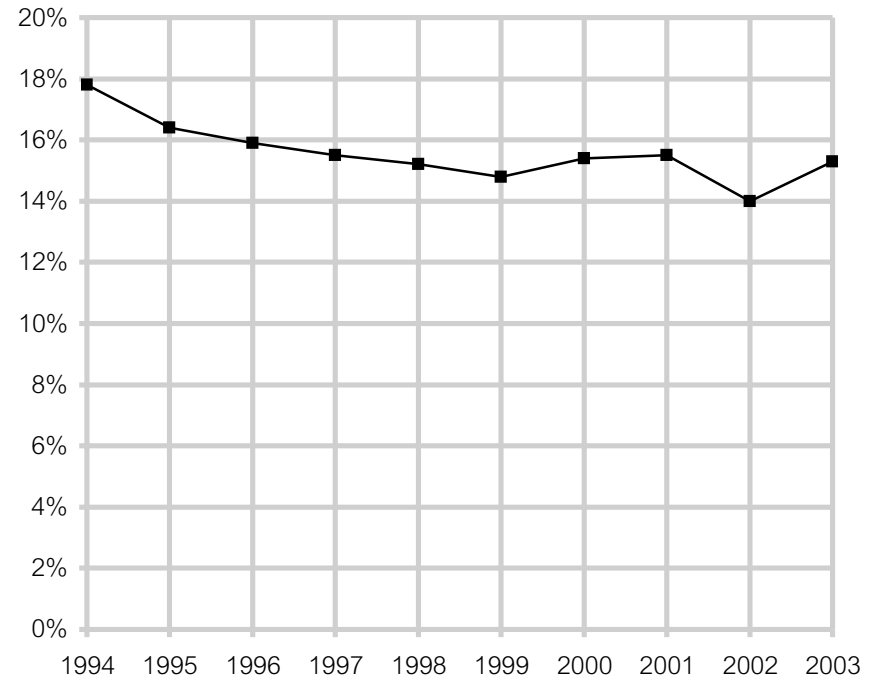


Percentage of claimants with back strains



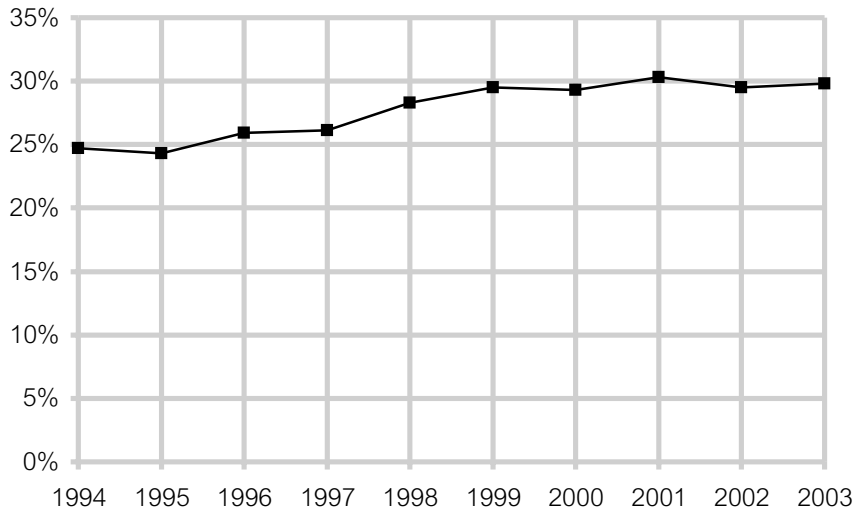
Based on claimants receiving a first payment of short-term disability or long-term disability benefits in these years

Percentage of claimants less than 25 years old



Based on claimants receiving a first payment of short-term disability or long-term disability benefits in these years

Percentage of claimants who are women



Based on claimants receiving a first payment of short-term disability or long-term disability benefits in these years

Days Lost From Work

There were 2,765,230 days lost from work during 2003 due to occupational injuries and diseases. The “days lost” in 2003 are the days paid in 2003 on current year and prior years’ injuries. Of the 2,765,230 days paid in 2003, 50.8 percent resulted from injuries and diseases that occurred in 2003, 25.6 percent resulted from injuries and diseases that occurred in 2002, and 23.6 percent resulted from injuries and diseases that occurred in 2001 and prior years.

The following is an analysis by sector and subsector of the days lost in the 1999–2003 period. The sectors and subsectors are described in “Classes of Industry” on page 54.

Sector/ Subsector	Description	Days Lost in the Year on Claims from All Years						Percent, 1999–2003
		1999	2000	2001	2002	2003	1999–2003	
Sector 70 — Primary Resources								
7010	Agriculture	49,187	44,860	48,877	47,680	41,647	232,251	1.4%
7020	Fishing	31,943	30,302	29,325	26,321	21,814	139,705	0.9%
7030	Forestry	148,930	164,152	143,869	122,145	109,603	688,699	4.2%
7040	Oil and Gas or Mineral Resources	43,998	40,080	36,733	34,895	25,702	181,408	1.1%
	Total	274,058	279,394	258,804	231,041	198,766	1,242,063	7.6%
Sector 71 — Manufacturing								
7110	Food and Beverage Products	114,919	112,904	96,659	94,152	67,631	486,265	3.0%
7120	Metal and Non-metallic Mineral Products	175,487	158,484	139,372	118,987	91,650	683,980	4.2%
7130	Petroleum, Coal, Rubber, Plastic, and Chemical Products	35,299	40,684	38,351	30,352	24,132	168,818	1.0%
7140	Wood and Paper Products	235,445	251,261	208,131	193,424	160,694	1,048,955	6.5%
7150	Other Products	45,144	45,146	50,788	47,363	45,134	233,575	1.4%
	Total	606,294	608,479	533,301	484,278	389,241	2,621,593	16.1%
Sector 72 — Construction								
7210	General Construction	355,657	355,601	330,225	309,640	279,515	1,630,638	10.0%
7220	Heavy Construction	8,121	11,084	14,264	10,634	5,112	49,215	0.3%
7230	Road Construction or Maintenance	37,135	37,648	34,448	29,569	23,684	162,484	1.0%
	Total	400,913	404,333	378,937	349,843	308,311	1,842,337	11.3%
Sector 73 — Transportation and Warehousing								
7310	Warehousing	20,827	21,860	22,578	17,306	6,454	89,025	0.5%
7320	Transportation and Related Services	333,019	324,941	311,706	275,558	234,519	1,479,743	9.1%
	Total	353,846	346,801	334,284	292,864	240,973	1,568,768	9.7%

Sector/ Subsector	Description	Days Lost in the Year on Claims from All Years						Percent, 1999–2003
		1999	2000	2001	2002	2003	1999–2003	
Sector 74 — Trade								
7410	Retail	253,660	254,354	241,339	228,938	189,195	1,167,486	7.2%
7420	Wholesale	71,053	54,852	60,714	55,665	47,388	289,672	1.8%
	Total	324,713	309,206	302,053	284,603	236,583	1,457,158	9.0%
Sector 75 — Public Sector								
7530	Public Administration	87,300	91,718	74,350	70,416	57,879	381,663	2.4%
Sector 76 — Service Sector								
7610	Accommodation, Food, and Leisure Services	224,984	227,381	212,148	184,029	157,762	1,006,304	6.2%
7620	Business Services	33,725	32,755	28,825	25,739	17,713	138,757	0.9%
7630	Professional, Scientific, and Technical Services	38,468	33,066	38,986	38,272	34,090	182,882	1.1%
7640	Other Services	233,597	223,630	199,108	189,270	154,572	1,000,177	6.2%
7650	Education	82,266	79,365	80,668	67,342	45,572	355,213	2.2%
7660	Health Care and Social Assistance	458,910	448,375	412,010	345,825	259,989	1,925,109	11.9%
7670	Utilities	21,351	20,574	17,505	23,174	13,888	96,492	0.6%
	Total	1,093,301	1,065,146	989,250	873,651	683,586	4,704,934	29.0%
Sectors 81 to 84 — Deposit Accounts		128,789	137,556	112,761	102,919	97,385	579,410	3.6%
Section 39		337,567	249,301	386,819	314,991	552,506	1,841,184	11.3%
Other		151	0	3	-288	0	-134	0.0%
TOTAL		3,606,932	3,491,934	3,370,562	3,004,318	2,765,230	16,238,976	100.0%

Percentage of Injuries by Gender of Worker

The first payment of short-term disability, long-term disability, or survivor benefits was made on 58,834 claims during the year 2003, a decrease of 4.4 percent from the number made in 2002. Of these claimants, 70 percent were men and 30 percent were women.

Number of Claims and Claim Costs by Provincial Regional District^{1,2} for 2003

Provincial Regional District		Number of Short-term Disability ³ , Long-term Disability ⁴ , and Fatal Claims First Paid in 2003	Health Care, Short-term Disability ³ , Vocational Rehabilitation, Long-term Disability ⁴ , and Survivor Benefits Charged in 2003 ⁵
01	East Kootenay	610	\$26,945,000
02	Central Kootenay	620	\$9,847,000
02a	Kootenay-Boundary	360	\$6,823,000
03	Okanagan-Similkameen	990	\$12,569,000
04	Columbia-Shuswap	580	\$15,963,000
05	North Okanagan	970	\$19,638,000
06	Central Okanagan	2,200	\$16,774,000
07	Thompson-Nicola	1,470	\$29,206,000
08	Cariboo	730	\$17,196,000
09	Squamish-Lillooet	700	\$8,892,000
10	Fraser-Cheam	1,020	\$13,092,000
11	Central Fraser Valley	4,770	\$48,680,000
12	Dewdney-Alouette	1,330	\$17,342,000
13	Greater Vancouver	28,620	\$390,623,000
14	Sunshine Coast	290	\$4,597,000
15	Powell River	250	\$9,971,000
16	Mount Waddington	300	\$5,825,000
16a	Ocean Falls	15	\$2,518,000

Provincial Regional District		Number of Short-term Disability ³ , Long-term Disability ⁴ , and Fatal Claims First Paid in 2003	Health Care, Short-term Disability ³ , Vocational Rehabilitation, Long-term Disability ⁴ , and Survivor Benefits Charged in 2003 ⁵
17	Skeena-Queen Charlotte	300	\$8,745,000
18	Kitimat-Stikine	390	\$13,153,000
19	Bulkley-Nechako	460	\$15,508,000
20	Fraser-Fort George	1,300	\$26,695,000
21	Peace River-Liard	780	\$17,839,000
22	Stikine	10	\$71,000
23	Capital	5,390	\$63,559,000
24	Cowichan Valley	920	\$27,867,000
25	Nanaimo	1,670	\$27,132,000
26	Alberni-Clayoquot	460	\$15,623,000
27	Comox-Strathcona	1,330	\$36,259,000
TOTAL⁶		58,834	\$908,950,437

¹ Some claims are classified according to the location of the head office of the firm rather than according to the actual location where the injury occurred.

² Claims uncoded at year-end have been allocated proportionately to the regional districts.

³ *Short-term disability* is the new term for what was called *wage loss* in earlier versions of this table.

⁴ *Long-term disability claims* is the term for what were called *permanent disability claims* in earlier versions of this table.

⁵ Includes capitalized values of pension awards, not monthly pension payments. These figures include the \$597,128 increase in survivor benefits arising from Bill 63 and the 1997 B.C. Supreme Court Ruling. These claim costs are as charged in the year and, therefore, are on a different basis than the liabilities shown in Note 7 of the *WCB 2003 Annual Report*.

⁶ Due to rounding, the regional totals and the grand totals may not balance.

Number of Claims¹ First Paid in 2003 Analyzed by Subsector and Type of Claim²

Table A-1

Sector/ Subsector ³	Description ⁴	Health-care-only Claims ⁵	Short-term Disability Claims ⁶	Long-term Disability Claims ⁷	Fatal Claims	Overall Total
Sector 70 — Primary Resources						
7010	Agriculture	615	707	87	6	1,415
7020	Fishing	362	297	45	5	709
7030	Forestry	1,677	1,098	384	11	3,170
7040	Oil and Gas or Mineral Resources	1,076	249	108	6	1,439
	Total	3,730	2,351	624	28	6,733
Sector 71 — Manufacturing						
7110	Food and Beverage Products	1,518	2,141	154	2	3,815
7120	Metal and Non-metallic Mineral Products	3,854	2,854	325	7	7,040
7130	Petroleum, Coal, Rubber, Plastic, and Chemical Products	879	762	71	2	1,714
7140	Wood and Paper Products	6,651	3,001	729	11	10,392
7150	Other Products	1,330	1,248	98	0	2,676
	Total	14,232	10,006	1,377	22	25,637
Sector 72 — Construction						
7210	General Construction	7,082	5,120	700	43	12,945
7220	Heavy Construction	139	41	20	1	201
7230	Road Construction or Maintenance	462	306	86	0	854
	Total	7,683	5,467	806	44	14,000
Sector 73 — Transportation and Warehousing						
7310	Warehousing	219	236	28	0	483
7320	Transportation and Related Services	3,276	4,680	451	26	8,433
	Total	3,495	4,916	479	26	8,916

Sector/ Subsector ³	Description ⁴	Health-care-only Claims ⁵	Short-term Disability Claims ⁶	Long-term Disability Claims ⁷	Fatal Claims	Overall Total
Sector 74 — Trade						
7410	Retail	6,061	5,906	284	1	12,252
7420	Wholesale	1,238	1,365	97	0	2,700
	Total	7,299	7,271	381	1	14,952
Sector 75 — Public Sector						
7530	Public Administration	1,854	2,127	129	6	4,116
Sector 76 — Service Sector						
7610	Accommodation, Food, and Leisure Services	6,021	5,043	231	6	11,301
7620	Business Services	728	575	37	4	1,344
7630	Professional, Scientific, and Technical Services	1,152	790	65	2	2,009
7640	Other Services	4,911	3,938	384	13	9,246
7650	Education	2,253	1,903	140	1	4,297
7660	Health Care and Social Assistance	5,216	6,567	355	4	12,142
7670	Utilities	471	369	50	4	894
	Total	20,752	19,185	1,262	34	41,233
Sectors 81 to 84 — Deposit Accounts						
8108	Canadian Pacific Ltd. and Associated Companies	364	110	46	0	520
8110	Federal Government	663	59	42	2	766
8209	Burlington Northern Inc.	0	2	0	0	2

Sector/ Subsector ³	Description ⁴	Health-care-only Claims ⁵	Short-term Disability Claims ⁶	Long-term Disability Claims ⁷	Fatal Claims	Overall Total
8310	Canadian National Railways, Via Rail, Air Canada	334	530	19	3	886
8411	Government of the Province of B.C.	1,227	1,338	102	3	2,670
	Total	2,588	2,039	209	8	4,844
Section 39						
39(1)(d)	Disaster Reserves	0	0	0	0	0
39(1)(e)	Enhancement Reserves	3	7	2	0	12
	Total	3	7	2	0	12
Other⁸		0	3	23	1	27
GRAND TOTAL		61,636	53,372	5,292	170	120,470

¹ Claims can be reported in one year and paid in the next; some of the paid claims in this table, therefore, are not part of the total claims reported in the Reported Claims table.

² Claims can change "Type" categories from one year to the next. The claim counts by type are, therefore, adjusted so that claims aren't counted twice. For example, if a claim counted this year as a short-term disability claim in Table A-1 becomes a long-term disability claim next year, a count would be added to next year's long-term disability count and subtracted from next year's short-term disability count. The count of short-term disability claims in Table A-1 can, therefore, be thought of as being the number of claims that get short-term disability benefits but don't go on to get long-term disability or survivor benefits. Similar adjustments are made for changes between other type categories.

³ Some employers have been reclassified since their initial classification into a subsector. The above table reflects such changes completely for fatal claims, and as of the date of reclassification, not retroactively, for all other claims.

⁴ For a complete description of the subsector numbers, see "Classes of Industry" on page 54.

⁵ *Health-care-only claims* is the term for what were called *medical-aid-only claims* in earlier versions of this table.

⁶ *Short-term disability claims* is the term for what were called *temporary total claims* in earlier versions of this table.

⁷ *Long-term disability claims* is the term for what were called *permanent disability claims* in earlier versions of this table.

⁸ Includes claims uncoded to subsector at year-end.

Number of Claims First Paid in 1994–2003 Analyzed by Type of Claim

**Table A-1 — Historical
by Claim Type**

Year First Paid	Health-care-only Claims ¹	Short-term Disability Claims ²	Long-term Disability Claims ³	Fatal Claims	Overall Total
1994	59,297	77,108	4,228	152	140,785
1995	68,823	73,762	4,504	134	147,223
1996	71,438	69,021	4,667	152	145,278
1997	73,020	70,745	4,215	164	148,144
1998	71,585	69,431	3,239	125	144,380
1999	65,398	68,671	2,525	147	136,741
2000	67,706	68,362	3,796	156	140,020
2001	61,989	64,165	4,001	168	130,323
2002	58,198	56,410	4,962	157	119,727
2003	61,636	53,372	5,292	170	120,470
1994–2003	659,090	671,047	41,429	1,525	1,373,091

¹ *Health-care-only claims* is the term for what were called *medical-aid-only claims* in earlier versions of this table.

² *Short-term disability claims* is the term for what were called *temporary total claims* in earlier versions of this table.

³ *Long-term disability claims* is the term for what were called *permanent disability claims* in earlier versions of this table.

**Total of Health-care-only, Short-term Disability, Long-term Disability,
and Fatal Claims First Paid in the Year, by Subsector, for 2002 and 2003**

**Table A-1 —
Historical by Subsector**

Sector/ Subsector ¹	Description ²	Health-care-only Claims		STD/LTD/Fatal Claims		Total	
		2002	2003	2002	2003	2002	2003
Sector 70 — Primary Resources							
7010	Agriculture	478	615	710	800	1,188	1,415
7020	Fishing	370	362	366	347	736	709
7030	Forestry	1,630	1,677	1,626	1,493	3,256	3,170
7040	Oil and Gas or Mineral Resources	965	1,076	433	363	1,398	1,439
	Total	3,443	3,730	3,135	3,003	6,578	6,733
Sector 71 — Manufacturing							
7110	Food and Beverage Products	1,573	1,518	2,694	2,297	4,267	3,815
7120	Metal and Non-metallic Mineral Products	3,824	3,854	3,380	3,186	7,204	7,040
7130	Petroleum, Coal, Rubber, Plastic, and Chemical Products	825	879	883	835	1,708	1,714
7140	Wood and Paper Products	6,422	6,651	3,688	3,741	10,110	10,392
7150	Other Products	1,250	1,330	1,367	1,346	2,617	2,676
	Total	13,894	14,232	12,012	11,405	25,906	25,637
Sector 72 — Construction							
7210	General Construction	5,974	7,082	5,776	5,863	11,750	12,945
7220	Heavy Construction	105	139	88	62	193	201
7230	Road Construction or Maintenance	419	462	393	392	812	854
	Total	6,498	7,683	6,257	6,317	12,755	14,000

Sector/ Subsector ¹	Description ²	Health-care-only Claims		STD/LTD/Fatal Claims		Total	
		2002	2003	2002	2003	2002	2003
Sector 73 — Transportation and Warehousing							
7310	Warehousing	272	219	473	264	745	483
7320	Transportation and Related Services	2,935	3,276	5,170	5,157	8,105	8,433
	Total	3,207	3,495	5,643	5,421	8,850	8,916
Sector 74 — Trade							
7410	Retail	5,464	6,061	6,149	6,191	11,613	12,252
7420	Wholesale	1,151	1,238	1,647	1,462	2,798	2,700
	Total	6,615	7,299	7,796	7,653	14,411	14,952
Sector 75 — Public Sector							
7530	Public Administration	1,846	1,854	2,293	2,262	4,139	4,116
Sector 76 — Service Sector							
7610	Accommodation, Food, and Leisure Services	5,670	6,021	5,557	5,280	11,227	11,301
7620	Business Services	679	728	652	616	1,331	1,344
7630	Professional, Scientific, and Technical Services	1,089	1,152	848	857	1,937	2,009
7640	Other Services	4,659	4,911	4,583	4,335	9,242	9,246
7650	Education	2,168	2,253	2,220	2,044	4,388	4,297
7660	Health Care and Social Assistance	5,038	5,216	7,221	6,926	12,259	12,142
7670	Utilities	589	471	535	423	1,124	894
	Total	19,892	20,752	21,616	20,481	41,508	41,233

Sector/ Subsector ¹	Description ²	Health-care-only Claims		STD/LTD/Fatal Claims		Total	
		2002	2003	2002	2003	2002	2003
Sectors 81 to 84 — Deposit Accounts							
8108	Canadian Pacific Ltd. and Associated Companies	398	364	209	156	607	520
8110	Federal Government	662	663	106	103	768	766
8209	Burlington Northern Inc.	2	0	4	2	6	2
8310	Canadian National Railways, Via Rail, Air Canada	393	334	657	552	1,050	886
8411	Government of the Province of B.C.	1,336	1,227	1,787	1,443	3,123	2,670
	Total	2,791	2,588	2,763	2,256	5,554	4,844
Section 39							
39(1)(d)	Disaster Reserves	0	0	0	0	0	0
39(1)(e)	Enhancement Reserves	0	3	3	9	3	12
	Total	0	3	3	9	3	12
Other³		12	0	11	27	23	27
GRAND TOTAL		58,198	61,636	61,529	58,834	119,727	120,470

¹ Some employers have been reclassified since their initial classification into a subsector. The above table reflects such changes as of the date of reclassification, not retroactively.

² For a complete description of the subsector numbers, see "Classes of Industry" on page 54.

³ Includes claims first paid in 2002 and 2003 that were uncoded to subsector at year-end.

**Number of Claims Accepted for Fatal Benefits
by Subsector¹ and Year Accepted²**

**Table A-1 —
Number of Fatalities**

Sector/ Subsector	Description ³	Year Accepted for Fatal Benefits										1994– 2003
		1994	1995	1996	1997	1998	1999	2000	2001	2002	2003	
Sector 70 — Primary Resources												
7010	Agriculture	6	7	4	5	1	3	8	4	6	6	50
7020	Fishing	9	10	4	2	7	2	4	7	5	5	55
7030	Forestry	22	18	27	23	14	16	17	23	18	11	189
7040	Oil and Gas or Mineral Resources	12	10	4	8	8	7	8	8	8	6	79
	Total	49	45	39	38	30	28	37	42	37	28	373
Sector 71 — Manufacturing												
7110	Food and Beverage Products	1	1	0	1	1	1	0	2	1	2	10
7120	Metal and Non-metallic Mineral Products	9	11	11	12	10	21	12	14	12	7	119
7130	Petroleum, Coal, Rubber, Plastic, and Chemical Products	1	0	1	0	1	1	2	3	3	2	14
7140	Wood and Paper Products	8	10	7	10	7	6	6	2	6	11	73
7150	Other Products	0	1	0	1	0	0	2	0	1	0	5
	Total	19	23	19	24	19	29	22	21	23	22	221
Sector 72 — Construction												
7210	General Construction	18	17	22	20	15	27	31	29	24	43	246
7220	Heavy Construction	0	0	0	4	3	1	0	0	1	1	10
7230	Road Construction or Maintenance	4	4	4	6	3	2	1	3	1	0	28
	Total	22	21	26	30	21	30	32	32	26	44	284

Sector/ Subsector	Description ³	Year Accepted for Fatal Benefits										1994– 2003
		1994	1995	1996	1997	1998	1999	2000	2001	2002	2003	
Sector 73 — Transportation and Warehousing												
7310	Warehousing	0	1	2	1	1	1	0	2	0	0	8
7320	Transportation and Related Services	30	17	28	27	13	26	35	30	26	26	258
	Total	30	18	30	28	14	27	35	32	26	26	266
Sector 74 — Trade												
7410	Retail	4	0	2	2	2	0	4	4	2	1	21
7420	Wholesale	3	0	0	1	4	2	2	-1	3	0	14
	Total	7	0	2	3	6	2	6	3	5	1	35
Sector 75 — Public Sector												
7530	Public Administration	5	2	7	7	4	2	3	5	4	6	45
Sector 76 — Service Sector												
7610	Accommodation, Food, and Leisure Services	2	6	6	4	5	3	6	4	4	6	46
7620	Business Services	2	0	0	2	2	3	0	2	4	4	19
7630	Professional, Scientific, and Technical Services	0	1	4	1	3	3	3	1	2	2	20
7640	Other Services	7	6	9	11	5	9	5	8	13	13	86
7650	Education	2	1	0	3	1	1	0	3	1	1	13
7660	Health Care and Social Assistance	2	3	1	0	4	0	0	2	1	4	17
7670	Utilities	0	0	2	3	1	2	1	1	3	4	17
	Total	15	17	22	24	21	21	15	21	28	34	218

Sector/ Subsector	Description ³	Year Accepted for Fatal Benefits										1994– 2003
		1994	1995	1996	1997	1998	1999	2000	2001	2002	2003	
Sectors 81 to 84 — Deposit Accounts												
8108	Canadian Pacific Ltd. and Associated Companies	2	3	1	4	6	2	5	4	2	0	29
8110	Federal Government	2	1	0	0	2	1	1	4	1	2	14
8310	Canadian National Railways, Via Rail, Air Canada	0	0	1	3	0	0	0	1	0	3	8
8411	Government of the Province of B.C.	0	3	3	3	1	5	0	3	3	3	24
	Total	4	7	5	10	9	8	6	12	6	8	75
Section 39												
39(1)(d)	Disaster Reserves	1	1	0	0	0	0	0	0	0	0	2
39(1)(e)	Enhancement Reserves	0	0	0	0	1	0	0	0	1	0	2
	Total	1	1	0	0	1	0	0	0	1	0	4
Other⁴		0	0	2	0	0	0	0	0	1	1	4
GRAND TOTAL		152	134	152	164	125	147	156	168	157	170	1,525

¹ Where employers have been reclassified into a different subsector, the above table reflects the reclassification for all ten years. Some of the counts in the table for the years 1994–2002 are therefore revised from the counts that appeared in last year's table.

² Some claims accepted for fatal benefits have been previously accepted for long-term disability benefits. An example of claims in this category are disease claims like silicosis.

³ Descriptions of the sectors and subsectors are in "Classes of Industry" on page 54.

⁴ One of these four fatalities involved carcinogenic exposure in more than one subsector. The second occurred to a worker on a training course while on WCB benefits for another injury. The third resulted principally from a workplace falling hazard, but a natural disease process was a contributing factor. The fourth was due partly to an underlying personal illness.

Claims Accepted for Fatal Benefits in 2003¹

Table A-1 — Fatality Descriptions

Subsector ²	Description ³	Year of Death	Occupation	Age ⁴	What Happened
7010	Agriculture	2003	Farmer	39	Pulled under spinning rear wheels of tractor after exiting vehicle.
7010	Agriculture	2003	Farm Worker	21	Worker was crushed inside the feed mixing wagon while mixing feed for cattle.
7010	Agriculture	2003	Labourer	25	Hay bale fell from loader bucket and struck worker.
7010	Agriculture	2003	Labourer	52	Motor vehicle accident. Van ran off road into ditch.
7010	Agriculture	2003	Mechanic	50	While worker was repairing bobcat's hydraulics, its elevated bucket dropped, crushing worker.
7010	Agriculture	2003	Contractor	52	Driving a skidder which overturned when it drove over a log. Worker was thrown from skidder.
7020	Fishing	2002	Hatchery Worker	43	Worker found lying face down in a shallow creek. Cause of death: drowning.
7020	Fishing	2002	Labourer	31	Worker attempted to retrieve a skiff that was floating away and drowned.
7020	Fishing	2003	Fisher	52	Slipped and fell, striking head.
7020	Fishing	2003	Fisher	48	Fell in water and drowned while returning to boat.
7020	Fishing	2003	Fisher	27	Worker fell off boat; presumed drowned.
7030	Forestry	2003	Principal	39	Involved in a single motor vehicle accident.
7030	Forestry	2003	Pilot	41	Plane crash. Water bomber crashed into side of mountain.
7030	Forestry	2002	Logger	54	Hit by a tree while logging.
7030	Forestry	2003	Faller	62	Worker was struck by the limb of a falling tree, resulting in a severe brain injury. Cause of death: aspiration pneumonia.
7030	Forestry	2003	Faller	85	Struck by a snag, resulting in paraplegia. Cause of death: septic shock due to decubitus ulcer.

Subsector ²	Description ³	Year of Death	Occupation	Age ⁴	What Happened
7030	Forestry	2003	Owner	65	Worker leaned out backhoe window and got head caught by arm of backhoe.
7030	Forestry	2003	Faller	29	Struck by falling tree.
7030	Forestry	2003	Truck Driver	49	Motor vehicle accident. Log truck ran off road.
7030	Forestry	2003	Faller	53	Struck on head by a falling snag.
7030	Forestry	2003	Yarding Engineer	77	Exposure to asbestos. Asbestosis.
7030	Forestry	2003	Tree Planter	66	Motor vehicle accident. Truck ran off road.
7040	Oil, Gas, and Mining	2003	Floorman	31	Worker was assisting in rigging up a large oil/gas drilling rig. A piece of equipment was torn off top of derrick crown and fell on worker.
7040	Oil, Gas, and Mining	2003	Production Operator	46	Gas dehydrator exploded and sprayed worker with hot glycol. Worker sustained severe burns and other extensive injuries. Cause of death: kidney failure.
7040	Oil, Gas, and Mining	2003	Truck Driver	27	Motor vehicle accident. Worker was a passenger in a pickup truck that was run over by a hauler.
7040	Oil, Gas, and Mining	2003	Miner	78	Exposure to silica. Silicosis.
7040	Oil, Gas, and Mining	2003	Attendant	75	Exposure to asbestos. Lung cancer.
7040	Oil, Gas, and Mining	2003	Miner	75	Exposure to silica and asbestos. Cause of death: pneumoconiosis (pulmonary fibrosis).
7110	Food Products	1997	Baker	64	Exposure to asbestos. Mesothelioma.
7110	Food Products	2003	Labourer	80	Exposure to asbestos. Mesothelioma.
7120	Mineral Products	2003	Labourer	79	Exposure to asbestos. Mesothelioma.
7120	Mineral Products	2003	Secretary	21	Motor vehicle accident. Worker's vehicle was struck by another vehicle at intersection.

Subsector ²	Description ³	Year of Death	Occupation	Age ⁴	What Happened
7120	Mineral Products	2003	Production Manager	76	Exposure to asbestos. Mesothelioma.
7120	Mineral Products	2003	Crane Operator	30	Boom of crane contacted an overhead power line. Worker was electrocuted.
7120	Mineral Products	2003	Electrician	62	Exposures in the workplace. Malignant melanoma.
7120	Mineral Products	2002	Steel Fitter	57	Worker was exposed to asbestos. Lung cancer.
7120	Mineral Products	2003	Pipefitter	54	Exposure to asbestos. Mesothelioma.
7120	Mineral Products	2003	Truck Builder	58	Worker fell while climbing down an eight foot high rolling scaffold.
7130	Chemical Products	2003	Consultant	45	Motor vehicle accident involving the worker's vehicle and a tanker truck.
7130	Chemical Products	2003	Pipefitter	79	Exposure to asbestos. Mesothelioma.
7140	Wood and Paper	2003	Bookbinder	67	Exposure to benzene. Leukemia (myelodysplastic syndrome).
7140	Wood and Paper	2003	Truck Driver	56	Driver was pulling tarp off load. Slipped and fell 13 feet off chip truck.
7140	Wood and Paper	2003	Mill Worker	18	Caught in machinery.
7140	Wood and Paper	2002	Labourer	67	Lifting lumber and injured back. Died from complications arising after back surgery.
7140	Wood and Paper	2003	Millwright	68	Exposure to asbestos. Asbestosis.
7140	Wood and Paper	1999	Boom Man	62	Died of melanoma due to sun exposure.
7140	Wood and Paper	2003	Boom Man	68	Pinned against a log stop by a log.
7140	Wood and Paper	2002	Lift Truck Operator	31	Several loads of veneer fell on worker.
7140	Wood and Paper	2003	Equipment Operator	39	Two trees fell onto cab of excavator, killing operator.
7210	General Construction	2003	Truck Driver	20	Single motor vehicle accident. Lost control of truck and ran off road.

Subsector ²	Description ³	Year of Death	Occupation	Age ⁴	What Happened
7210	General Construction	2003	Construction Worker	48	Worker was walking backwards while using a concrete cutting machine and inadvertently walked into the path of an oncoming truck.
7210	General Construction	2003	Labourer	66	Exposure to asbestos. Lung cancer.
7210	General Construction	2003	Carpenter	80	Exposure to asbestos. Mesothelioma.
7210	General Construction	2003	Electrician	56	Exposure to asbestos. Mesothelioma.
7210	General Construction	2003	Labourer	43	Exposure to asbestos. Mesothelioma.
7210	General Construction	2003	Electrician	54	Motor vehicle accident.
7210	General Construction	2003	Electrician	69	Exposure to asbestos. Mesothelioma.
7210	General Construction	2003	Floor Layer	75	Exposure to asbestos. Mesothelioma.
7210	General Construction	2002	Mill Worker	29	Worker was struck in the stomach by a piece of metal that flew out of greenchain.
7210	General Construction	2003	Construction Worker	66	Worker fell from second level while installing floor joists.
7210	General Construction	2003	Labourer	60	Worker fell eight floors down an elevator shaft.
7210	General Construction	2003	Labourer	65	Exposure to asbestos. Mesothelioma.
7210	General Construction	2003	Carpenter	88	Exposure to asbestos. Mesothelioma.
7210	General Construction	2003	Carpenter	22	Worker fell down an elevator shaft into three feet of water. Suffered severe blunt head trauma and drowned.
7210	General Construction	2003	Stockman	52	Exposure to asbestos. Mesothelioma.
7210	General Construction	2003	Insulator	72	Exposure to asbestos. Lung cancer.
7210	General Construction	2003	Insulator	62	Exposure to asbestos. Mesothelioma.
7210	General Construction	2003	Insulator	66	Exposure to asbestos. Mesothelioma.
7210	General Construction	2003	Owner	69	Worker fell down stairs. Died following total knee replacement surgery. Cause of death: pulmonary embolism.

Subsector ²	Description ³	Year of Death	Occupation	Age ⁴	What Happened
7210	General Construction	2003	Faller	46	Worker was struck by a tree that was felled by another worker.
7210	General Construction	2003	Equipment Operator	32	Was disconnecting backhoe attachment from bobcat when attachment slipped, crushing worker.
7210	General Construction	2003	Truck Driver	49	Motor vehicle accident. Truck ran off road and went into river.
7210	General Construction	2003	Contractor	68	Backing gravel truck out of driveway. Truck rolled down embankment, throwing worker from vehicle.
7210	General Construction	2003	Sheet Metal Worker	67	Exposure to asbestos. Lung cancer and asbestosis.
7210	General Construction	2003	Gutter Installer	74	Worker passed away as a result of liver disease due to long-term effects of pain medication taken after sustaining a work-related injury.
7210	General Construction	2003	Cat Operator	52	Worker was run over by a pipelayer (dozer).
7210	General Construction	2003	Equipment Operator	63	Steel pipe fell off a trailer, striking worker.
7210	General Construction	2003	Steam Engineer	69	Exposure to asbestos. Mesothelioma.
7210	General Construction	2003	Plumber	76	Exposure to asbestos. Mesothelioma.
7210	General Construction	2003	Steam Engineer	76	Exposure to asbestos. Mesothelioma.
7210	General Construction	2003	Gas Fitter	77	Exposure to asbestos. Mesothelioma.
7210	General Construction	2003	Plumber	62	Exposure to asbestos. Mesothelioma.
7210	General Construction	2003	Pipefitter	72	Exposure to asbestos. Mesothelioma.
7210	General Construction	2003	Insulator	80	Exposure to asbestos. Asbestosis.
7210	General Construction	2003	Insulator	76	Exposure to asbestos. Asbestosis and lung cancer.
7210	General Construction	2003	Sheet Metal Worker	68	Exposure to asbestos. Asbestosis.
7210	General Construction	1996	Steam Fitter	64	Exposure to asbestos. Asbestosis.
7210	General Construction	2003	Plumber	77	Exposure to asbestos. Asbestosis.

Subsector ²	Description ³	Year of Death	Occupation	Age ⁴	What Happened
7210	General Construction	2002	Lineman	45	Worker in process of commissioning a 25kV system when he received an electrical shock from a backfeed source. Electrocutation.
7210	General Construction	2003	Labourer	62	Exposure to asbestos. Asbestosis and lung cancer.
7210	General Construction	2002	Sheet Metal Worker	74	Exposure to asbestos. Asbestosis.
7210	General Construction	2002	Roofer	39	Worker jumped from roof to truck, scraping his foot. Cause of death: necrotizing fasciitis (flesh-eating disease).
7210	General Construction	2003	Labourer	57	Exposure to asbestos. Mesothelioma.
7220	Heavy Construction	2002	Boilermaker	56	Worker took his own life due to pain and other complications arising from a work-related injury.
7320	Transportation and Related Services	2003	Engineer	77	Exposure to asbestos. Mesothelioma.
7320	Transportation and Related Services	2003	Welder/Fitter	47	Worker entered watertight void space of barge and was overcome. Anoxia.
7320	Transportation and Related Services	2003	Yard Helper	36	Worker entered watertight void space of barge and was overcome. Anoxic encephalopathy.
7320	Transportation and Related Services	2003	Lead Hand	46	Worker entered watertight void space of barge and was overcome. Anoxia.
7320	Transportation and Related Services	2003	Shop Foreman	38	Worker entered watertight void space of barge and was overcome. Anoxia.
7320	Transportation and Related Services	2003	First Mate	37	Worker was crushed between a barge and a tugboat. Found face down in the water.
7320	Transportation and Related Services	2003	Pilot	22	Plane crash.
7320	Transportation and Related Services	1996	Pilot	52	Plane crashed into lake.
7320	Transportation and Related Services	2001	Truck Driver	39	Motor vehicle accident. Worker jumped from truck as it went over an embankment.

Subsector ²	Description ³	Year of Death	Occupation	Age ⁴	What Happened
7320	Transportation and Related Services	2002	Delivery Driver	18	Worker's pickup was struck by a moose. Vehicle veered into opposite lane and was struck by oncoming traffic.
7320	Transportation and Related Services	2002	Truck Driver	26	Single motor vehicle accident. Truck overturned.
7320	Transportation and Related Services	2002	Owner-Operator	28	Lost control of vehicle. Collided with guardrail and lamp standard on bridge.
7320	Transportation and Related Services	2003	Truck Driver	31	Motor vehicle accident. Head-on collision between two semi-trailers.
7320	Transportation and Related Services	2003	Truck Driver	66	Landslide swept worker's truck into lake.
7320	Transportation and Related Services	2003	Truck Driver	61	Driver was tarping a load of lumber while wearing a fall restraint safety belt. He was found suspended by the waist belt dangling from the fall arrest system.
7320	Transportation and Related Services	2003	Truck Driver	24	Single motor vehicle accident. Truck ran off road.
7320	Transportation and Related Services	2003	Truck Driver	45	Motor vehicle accident. Tractor-trailer went off bridge and landed in river.
7320	Transportation and Related Services	2003	Truck Driver	56	Single motor vehicle accident.
7320	Transportation and Related Services	2003	Truck Driver	71	Load of lumber spilled off trailer and struck worker.
7320	Transportation and Related Services	2003	Longshoreman	73	Exposure to asbestos. Asbestosis.
7320	Transportation and Related Services	2003	Dock Worker	51	Exposure to asbestos. Mesothelioma.
7320	Transportation and Related Services	2003	Helicopter Pilot	33	Helicopter crashed while forest-fire fighting.
7320	Transportation and Related Services	2003	Helicopter Pilot	60	Worker was fatally burned in a fire/explosion while using jet fuel to start a fire in order to burn debris.
7320	Transportation and Related Services	2003	Truck Driver	37	Motor vehicle accident. Head-on collision with another logging truck.
7320	Transportation and Related Services	2003	Truck Driver	35	Single motor vehicle accident. Vehicle ran off road and rolled down embankment.
7320	Transportation and Related Services	2003	Truck Driver	55	Motor vehicle accident. Head-on collision with a transport truck.

Subsector ²	Description ³	Year of Death	Occupation	Age ⁴	What Happened
7410	Retail	2003	Retail Sales	20	Motor vehicle accident while riding a motorcycle.
7530	Public Administration	2003	CEO	55	Single motor vehicle accident. Pickup truck went over embankment.
7530	Public Administration	2003	Guide	45	Worker drowned when boat capsized on lake.
7530	Public Administration	2002	Firefighter	77	Exposure to numerous carcinogens. Brain cancer.
7530	Public Administration	2002	Printer	71	Exposure to asbestos. Mesothelioma.
7530	Public Administration	2003	Treasurer	49	Motor vehicle accident. Struck by an oncoming truck.
7530	Public Administration	2003	Firefighter	58	Exposure to numerous carcinogens. Brain cancer.
7610	Hotels, Food, and Leisure	2002	Owner	48	Motor vehicle accident.
7610	Hotels, Food, and Leisure	2003	Guide	30	Worker drowned when boat capsized on lake.
7610	Hotels, Food, and Leisure	2003	Pilot	54	Plane crashed into lake.
7610	Hotels, Food, and Leisure	2003	Maintenance Worker	61	Grinding wheel exploded. Piece of wheel went into femoral artery.
7610	Hotels, Food, and Leisure	2003	Owner	62	Fell 10 feet from ladder onto patio deck.
7610	Hotels, Food, and Leisure	2002	Owner-Manager	31	Motor vehicle accident.
7620	Business Services	2003	Broker	32	Fell backwards down three concrete steps striking head on cement walkway.
7620	Business Services	2003	Comptroller	48	Motor vehicle accident.
7620	Business Services	2002	Telemarketer	54	Worker fell on stairway.
7620	Business Services	2003	Truck Driver	67	Worker was unloading truck when it rolled over him.
7630	Technical Services	2003	Farrier	37	Motor vehicle accident. Head-on collision.
7630	Technical Services	2002	Greensman	60	Lifting heavy bags of wet leaves. Heart attack.
7640	Other Services	2003	Mechanic	76	Exposure to asbestos. Asbestosis.
7640	Other Services	2003	Mechanic	55	Exposure to asbestos. Asbestosis.

Subsector ²	Description ³	Year of Death	Occupation	Age ⁴	What Happened
7640	Other Services	2003	Front End Attendant	57	Exposure to asbestos. Mesothelioma.
7640	Other Services	2003	Security	79	Exposure to asbestos. Asbestosis.
7640	Other Services	2002	Painter	58	Exposure to dust and paint fumes. Cause of death: respiratory failure from interstitial fibrosis.
7640	Other Services	2003	Supervisor	36	Worker contacted an energized conductor (7,200 volts), which caused him to fall from a scaffold. Died from fall.
7640	Other Services	2000	Sales Rep	56	Exposure to asbestos. Mesothelioma.
7640	Other Services	2002	Crew	40	Boat capsized. Hypothermia.
7640	Other Services	2003	Home Support Worker	58	Involved in a motor vehicle accident and sustained serious disabling injuries. Cause of death: subsequent aspiration pneumonia.
7640	Other Services	2003	Service Representative	58	Motor vehicle accident.
7640	Other Services	2003	Security Guard	32	Motor vehicle accident. Worker drove vehicle off pier. Vehicle sank in 25 feet of water.
7640	Other Services	2003	Landscaper	57	Worker stepped on a nail and developed a chronic ulcer. Foot was eventually amputated. Worker died four days later from cardiac arrest due to renal failure.
7640	Other Services	2003	Labourer	57	Exposure to asbestos. Mesothelioma.
7650	Education	2003	Custodian	74	Exposure to asbestos. Lung cancer.
7660	Health Care	2003	Nurse's Aide	72	Exposure to asbestos during renovations of building. Mesothelioma.
7660	Health Care	2002	Registered Nurse	55	Lifting patient. Back injury. Subsequent gastrointestinal hemorrhage from anti-inflammatory drugs taken following surgery.
7660	Health Care	2003	First Aid Attendant	43	Motor vehicle accident. Head-on collision with semi-trailer.

Subsector ²	Description ³	Year of Death	Occupation	Age ⁴	What Happened
7660	Health Care	2002	Supervisor	78	Exposure to red cedar dust, resulting in chronic obstructive pulmonary disease.
7670	Utilities	2003	Engineer	61	Exposure to asbestos. Mesothelioma.
7670	Utilities	2003	Electrician	59	Received a high-voltage electric shock when entering limits of approach of an energized switch.
7670	Utilities	2003	Electrician	63	Exposure to asbestos. Mesothelioma.
7670	Utilities	2003	Electrician	49	Motor vehicle accident. Head-on collision with semi-trailer unit.
8110	Federal Government	2003	Supervisor	71	Exposure to asbestos. Mesothelioma.
8110	Federal Government	2003	Biologist	47	Worker had just finished pulling boat out of water when he collapsed. Cause of death: heart attack.
8310	CNR, Via Rail, Air Canada	2003	Engineer	51	Train derailed and fell into ravine.
8310	CNR, Via Rail, Air Canada	2003	Conductor	51	Train derailed and fell into ravine.
8310	CNR, Via Rail, Air Canada	2003	Conductor	40	Worker was run over by two rail cars during a switching operation.
8411	Provincial Government	2002	Patrolman	68	Worker was struck by a train, resulting in paraplegia. Cause of death: respiratory failure and pneumonia.
8411	Provincial Government	2002	Director	54	Murdered. Shot by co-worker.
8411	Provincial Government	2003	Supervisor	50	Motor vehicle accident. Head-on collision.
		1999	Warehouseman	45	Worker took own life due to pain and other complications arising from a work-related injury.

¹ This table provides a description of the 170 fatal claims accepted in 2003.

² The subsector figures shown in this table differ slightly from the figures shown in Table A-1 Fatalities. Two fatal claims originally counted in years prior to 2003 were transferred in 2003, one from subsector 7120 to subsector 7140, and the other from subsector 7210 to subsector 7140. Table A-1 Fatalities shows two “+1” counts in subsector 7140, and “-1” counts in each of subsectors 7210 and 7120 on account of these two claims. Because the two claims were accepted in years prior to 2003, they aren’t listed in the above table.

³ For a complete description of the subsector number, see “Classes of Industry” starting on page 54.

⁴ Age at time of death of worker.

Claim Costs Charged in 2003 by Subsector and Type of Claim (Claims from All Years)

Table A-2

Sector/ Subsector ¹	Description ²	Costs for Health-care-only Claims ³	Costs for Short-term Disability Claims (Includes Health Care and Rehab Costs) ⁴	Costs for Long-term Disability Claims (Includes Health Care and Rehab Costs) ⁵	Survivor Benefits (Includes Health Care and Rehab Costs) ⁶	Overall Total ⁷
Sector 70 — Primary Resources						
7010	Agriculture	150,881	3,673,368	3,080,749	969,203	7,874,200
7020	Fishing	166,329	2,147,532	2,772,186	522,417	5,608,464
7030	Forestry	1,180,042	13,929,511	42,578,184	2,723,694	60,411,432
7040	Oil and Gas or Mineral Resources	736,332	3,239,855	13,389,728	870,284	18,236,198
	Total	2,233,584	22,990,266	61,820,847	5,085,598	92,130,294
Sector 71 — Manufacturing						
7110	Food and Beverage Products	379,620	7,037,409	11,906,256	815,817	20,139,102
7120	Metal and Non-metallic Mineral Products	1,208,066	12,789,338	27,496,754	1,605,020	43,099,178
7130	Petroleum, Coal, Rubber, Plastic, and Chemical Products	176,354	3,162,879	4,649,804	622,085	8,611,122
7140	Wood and Paper Products	2,851,254	20,820,500	52,722,986	1,374,006	77,768,746
7150	Other Products	236,745	5,166,352	5,562,087	0	10,965,184
	Total	4,852,039	48,976,477	102,337,886	4,416,929	160,583,331
Sector 72 — Construction						
7210	General Construction	2,170,103	33,501,802	62,933,006	6,453,417	105,058,328
7220	Heavy Construction	117,022	511,269	4,320,394	820	4,949,504
7230	Road Construction or Maintenance	222,328	2,377,142	12,146,701	11,670	14,757,841
	Total	2,509,454	36,390,213	79,400,100	6,465,907	124,765,674
Sector 73 — Transportation and Warehousing						
7310	Warehousing	40,834	567,025	2,565,690	0	3,173,548
7320	Transportation and Related Services	1,146,998	26,987,010	41,115,573	5,206,998	74,456,578
	Total	1,187,831	27,554,035	43,681,263	5,206,998	77,630,127

Sector/ Subsector ¹	Description ²	Costs for Health-care-only Claims ³	Costs for Short-term Disability Claims (Includes Health Care and Rehab Costs) ⁴	Costs for Long-term Disability Claims (Includes Health Care and Rehab Costs) ⁵	Survivor Benefits (Includes Health Care and Rehab Costs) ⁶	Overall Total ⁷
Sector 74 — Trade						
7410	Retail	941,649	14,609,021	17,807,896	8,935	33,367,500
7420	Wholesale	221,760	5,362,727	6,212,687	-175,379	11,621,795
	Total	1,163,409	19,971,747	24,020,584	-166,445	44,989,295
Sector 75 — Public Sector						
7530	Public Administration	511,695	7,493,571	11,401,599	1,261,953	20,668,818
Sector 76 — Service Sector						
7610	Accommodation, Food, and Leisure Services	975,655	12,549,103	10,983,383	1,216,652	25,724,792
7620	Business Services	147,393	1,805,993	2,788,042	407,347	5,148,776
7630	Professional, Scientific, and Technical Services	220,036	4,225,188	2,731,931	465,170	7,642,325
7640	Other Services	1,503,513	17,477,844	25,795,229	1,106,738	45,883,324
7650	Education	578,281	5,938,697	7,552,183	182,477	14,251,638
7660	Health Care and Social Assistance	862,271	24,720,254	21,761,948	147,651	47,492,124
7670	Utilities	252,335	1,996,977	4,508,891	1,675,742	8,433,945
	Total	4,539,485	68,714,056	76,121,607	5,201,776	154,576,924
Sectors 81 to 84 — Deposit Accounts						
8108	Canadian Pacific Ltd. and Associated Companies	231,812	1,479,900	5,178,906	0	6,890,618
8110	Federal Government	194,116	5,592,777	949,438	-29,046	6,707,286
8209	Burlington Northern Inc.	1,667	24,437	52,645	0	78,749
8310	Canadian National Railways, Via Rail, Air Canada	100,911	2,729,812	1,048,615	1,004,658	4,883,996

Sector/ Subsector ¹	Description ²	Costs for Health-care-only Claims ³	Costs for Short-term Disability Claims (Includes Health Care and Rehab Costs) ⁴	Costs for Long-term Disability Claims (Includes Health Care and Rehab Costs) ⁵	Survivor Benefits (Includes Health Care and Rehab Costs) ⁶	Overall Total ⁷
8411	Government of the Province of B.C.	353,787	6,605,446	6,873,372	823,524	14,656,128
	Total	882,293	16,432,372	14,102,976	1,799,136	33,216,777
Section 39						
39(1)(d)	Disaster Reserves	0	-35,586	66,446	0	30,859
39(1)(e)	Enhancement Reserves	5,698	76,980,126	77,220,502	57,054	154,263,380
	Total	5,698	76,944,540	77,286,948	57,054	154,294,240
	Reinstatement of Widows' Benefits⁸	0	0	0	597,128	597,128
	Other Costs Including Investigation and Unclassified⁹	9,652,807	18,687,403	13,185,952	3,971,667	45,497,829
	GRAND TOTAL¹⁰	27,538,295	344,154,680	503,359,761	33,897,700	908,950,437

¹ Some employers have been reclassified since their initial classification into a subsector. The above table reflects such changes as of the date of reclassification, not retroactively.

² For a complete description of the subsector number, see "Classes of Industry" starting on page 54.

³ *Health-care-only claims* is the term for what were called *medical-aid-only claims* in earlier versions of this table.

⁴ *Short-term disability claims* is the term for what were called *temporary total claims* in earlier versions of this table.

⁵ *Long-term disability claims* is the term for what were called *permanent disability claims* in earlier versions of this table.

⁶ *Survivor benefits* is the term for what were called *costs for fatal claims* in earlier versions of this table.

⁷ These claim costs are calculated on a different basis than the benefit liabilities shown in Note 7 of the *WCB 2003 Annual Report*.

⁸ These additional survivor benefits arose from the 1997 B.C. Supreme Court decision regarding the reinstatement of widows' benefits.

⁹ All rehab costs were included in "Other Costs" in 1997 and prior versions of this table. Since 1998, rehab costs are shown in this table in the subsector in which the costs were incurred.

¹⁰ Due to rounding, the sector and subsector totals may not balance.

**Claim Costs Charged in 1994–2003 by Type of Claim
(Claims from All Years)**

Table A-2 — Historical

Year Charged	Costs for Health-care-only Claims ¹	Costs for Short-term Disability Claims (Includes Health Care and Rehab Costs) ²	Costs for Long-term Disability Claims (Includes Health Care and Rehab Costs) ³	Survivor Benefits (Includes Health Care and Rehab Costs) ⁴	Overall Total ⁵
1994 ⁶	21,654,142	388,553,760	304,501,413	52,088,831	766,798,146
1995	23,809,585	381,635,446	285,330,652	29,082,255	719,857,938
1996	22,663,943	338,494,634	335,071,830	38,863,587	735,093,994
1997 ⁶	21,526,708	361,078,208	343,490,572	410,040,756	1,136,136,244
1998 ⁶	24,223,632	425,569,213	349,925,728	34,747,392	834,465,964
1999 ⁶	27,294,245	471,411,007	358,333,884	36,712,963	893,752,100
2000 ⁶	28,989,725	478,087,418	432,228,881	45,035,092	984,341,116
2001 ⁶	29,032,562	462,531,823	467,237,615	36,415,150	995,217,150
2002 ⁶	28,430,866	401,973,176	464,108,071	36,897,155	931,409,269
2003 ⁶	27,538,295	344,154,680	503,359,761	33,897,700	908,950,437
1994–2003⁷	255,163,702	4,053,489,365	3,843,588,408	753,780,882	8,906,022,358

¹ *Health-care-only claims* is the term for what were called *medical-aid-only claims* in earlier versions of this table.

² *Short-term disability claims* is the term for what were called *temporary total claims* in earlier versions of this table.

³ *Long-term disability claims* is the term for what were called *permanent disability claims* in earlier versions of this table.

⁴ *Survivor benefits* is the term for what were called *costs for fatal claims* in earlier versions of this table.

⁵ These claim costs are calculated on a different basis than the benefit liabilities shown in Note 7 of the *WCB 2003 Annual Report*.

⁶ Survivor benefits in 1994 and 1997 to 2003 include the additional reserves required by Bill 63 and the 1997 B.C. Supreme Court decision, both of which increased the benefit entitlement of dependants of deceased workers. These amounts were: 1994 — \$15,555,606, 1997 — \$377,426,893, 1998 — \$3,843,658, 1999 — \$7,028,815, 2000 — \$5,948,941, 2001 — \$694,321, 2002 — \$1,119,936, and 2003 — \$597,128. The overall totals minus these amounts for these eight years are: 1994 — \$751,242,540, 1997 — \$758,709,351, 1998 — \$830,622,306, 1999 — \$886,723,285, 2000 — \$978,392,175, 2001 — \$994,522,829, 2002 — \$930,289,332, and 2003 — \$908,353,309.

⁷ Due to rounding, the subtotals and totals may not balance.

An Analysis by Subsector of the 58,834 Short-term Disability¹, Long-term Disability², and Fatal Claims First Paid in 2003 and an Analysis of the Number of Days Lost During 2003 on Claims for All Years

Table B-1

		Short-term Disability, Long-term Disability, and Fatal Claims First Paid in 2003													
		Number of Claims by Type of Accident ³													
Sector/ Subsector ⁴	Description ⁵	Days Lost ⁶ in 2003 on Claims for All Years	Avg. Weekly Wage	No. of Claims	Struck Against	Struck By	Falls from Eleva- tion	Falls on Same Level	Caught In	Rubbed or Abraded	Over- exertion, Bodily Motion ⁷	Harmful Sub- stances	Trans- port- ation	Miscel- laneous	
Sector 70 — Primary Resources															
7010	Agriculture	41,647	446	800	40	135	120	75	50	5	250	15	80	30	
7020	Fishing	21,814		347	10	60	10	20	20	0	160	10	55	0	
7030	Forestry	109,603	1011	1,493	40	365	220	200	50	35	405	55	115	10	
7040	Oil and Gas or Mineral Resources	25,702	860	363	10	50	50	35	20	15	110	25	45	5	
	Total	198,766	758	3,003	100	610	400	330	140	55	925	105	295	45	
Sector 71 — Manufacturing															
7110	Food and Beverage Products	67,631	629	2,297	165	420	155	270	150	10	950	75	90	10	
7120	Metal and Non-metallic Mineral Products	91,650	785	3,186	210	725	195	150	220	210	1,220	190	45	20	
7130	Petroleum, Coal, Rubber, Plastic, and Chemical Products	24,132	609	835	65	170	55	65	65	20	340	35	15	5	
7140	Wood and Paper Products	160,694	691	3,741	420	720	240	265	375	65	1,450	130	50	25	
7150	Other Products	45,134	593	1,346	130	340	100	80	75	25	535	30	20	10	
	Total	389,241	688	11,405	990	2,375	745	830	885	330	4,495	460	220	70	

Short-term Disability, Long-term Disability, and Fatal Claims First Paid in 2003

Sector/ Subsector ⁴	Description ⁵	Days Lost ⁶ in 2003 on Claims for All Years	Avg. Weekly Wage	No. of Claims	Number of Claims by Type of Accident ³									
					Struck Against	Struck By	Falls from Eleva- tion	Falls on Same Level	Caught In	Rubbed or Abraded	Over- exertion, Bodily Motion ⁷	Harmful Sub- stances	Trans- port- ation	Miscel- laneous
Sector 72 — Construction														
7210	General Construction	279,515	728	5,863	420	1,205	1,005	400	165	160	2,195	165	115	35
7220	Heavy Construction	5,112	947	62	5	20	10	0	0	0	10	10	5	0
7230	Road Construction or Maintenance	23,684	839	392	15	50	45	35	10	15	160	15	40	5
	Total	308,311	737	6,317	440	1,275	1,060	435	175	175	2,365	190	160	40
Sector 73 — Transportation and Warehousing														
7310	Warehousing	6,454	683	264	20	45	30	20	15	5	95	5	30	0
7320	Transportation and Related Services	234,519	822	5,157	230	570	615	415	135	45	2,165	105	775	100
	Total	240,973	812	5,421	250	615	645	435	150	50	2,260	110	805	100
Sector 74 — Trade														
7410	Retail	189,195	516	6,191	435	1,080	330	570	165	35	3,165	120	165	125
7420	Wholesale	47,388	592	1,462	85	225	140	115	50	10	720	20	95	5
	Total	236,583	531	7,653	520	1,305	470	685	215	45	3,885	140	260	130

Short-term Disability, Long-term Disability, and Fatal Claims First Paid in 2003

Number of Claims by Type of Accident³

Sector/ Subsector ⁴	Description ⁵	Days Lost ⁶ in 2003 on Claims for All Years	Avg. Weekly Wage	No. of Claims	Number of Claims by Type of Accident ³									
					Struck Against	Struck By	Falls from Eleva- tion	Falls on Same Level	Caught In	Rubbed or Abraded	Over- exertion, Bodily Motion ⁷	Harmful Sub- stances	Trans- port- ation	Miscel- laneous
Sector 75 — Public Sector														
7530	Public Administration	57,879	880	2,262	110	255	225	220	50	30	1,075	70	115	110
Sector 76 — Service Sector														
7610	Accommodation, Food, and Leisure Services	157,762	453	5,280	415	1,120	340	905	85	20	1,655	545	95	100
7620	Business Services	17,713	721	616	30	70	75	90	15	0	250	10	45	30
7630	Professional, Scientific, and Technical Services	34,090	839	857	50	120	95	100	15	5	340	30	50	50
7640	Other Services	154,572	674	4,335	285	685	410	400	165	120	1,815	165	190	100
7650	Education	45,572	878	2,044	110	250	160	340	15	20	980	65	40	65
7660	Health Care and Social Assistance	259,989	823	6,926	250	540	195	700	65	10	4,230	315	115	515
7670	Utilities	13,888	1016	423	20	30	70	35	5	0	225	10	25	5
	Total	683,586	705	20,481	1,160	2,815	1,345	2,570	365	175	9,495	1,140	560	865
Sectors 81 to 84 — Deposit Accounts														
8108	Canadian Pacific Ltd. and Associated Companies	10,774		156	10	15	10	15	5	0	65	15	15	5
8110	Federal Government	10,473		103	0	5	15	15	5	0	40	5	10	10
8209	Burlington Northern Inc.	135		2	0	0	0	0	0	0	0	0	0	0
8310	Canadian National Railways, Via Rail, Air Canada	24,232		552	25	50	35	50	15	0	315	15	30	15

Short-term Disability, Long-term Disability, and Fatal Claims First Paid in 2003

Sector/ Subsector ⁴	Description ⁵	Days Lost ⁶ in 2003 on Claims for All Years	Avg. Weekly Wage	No. of Claims	Number of Claims by Type of Accident ³									
					Struck Against	Struck By	Falls from Eleva- tion	Falls on Same Level	Caught In	Rubbed or Abraded	Over- exertion, Bodily Motion ⁷	Harmful Sub- stances	Trans- port- ation	Miscel- laneous
8411	Government of the Province of B.C.	51,771		1,443	50	115	75	135	20	15	810	40	75	110
	Total	97,385	913	2,256	85	185	135	215	45	15	1,230	75	130	140
Section 39														
39(1)(d)	Disaster Reserves	-505		0	0	0	0	0	0	0	0	0	0	0
39(1)(e)	Enhancement Reserves	553,011		9	0	0	0	0	0	0	10	0	0	0
	Total	552,506		9	0	0	0	0	0	0	10	0	0	0
Other⁸		0		27	0	0	0	0	0	0	0	25	0	0
GRAND TOTAL		2,765,230	711	58,834	3,655	9,435	5,025	5,720	2,025	875	25,740	2,315	2,545	1,500

¹ Short-term disability claims is the term for what were called *wage-loss claims* in earlier versions of this table.

² Long-term disability claims is the term for what were called *permanent disability claims* in earlier versions of this table.

³ Claim counts by type of accident have been adjusted for the effect of uncoded claims and therefore appear as rounded numbers.

⁴ Some employers have been reclassified since their initial classification into a subsector. The above table reflects such changes as of the date of reclassification, not retroactively.

⁵ The sectors and subsectors are described in "Classes of Industry" on page 54.

⁶ "Days lost" are as paid in the year on current- and prior-year claims.

⁷ Overexertion and bodily motion incidents usually result in strains, tenosynovitis, and related conditions.

⁸ Includes claims uncoded to subsector at year-end.

Days Lost, Average Weekly Wage, Average Age, and Breakdown by Gender for Short-term Disability, Long-term Disability, and Fatal Claims, 1994–2003

Table B-1 — Historical¹

Year	Total Days Lost ² in the Year	Average Weekly Wage of Claimant ³	Average Age of Claimant ³	Number of Short-term Disability, Long-term Disability, and Fatal Claims First Paid in the Year, by Gender		
				Males ⁴	Females ⁴	Total
1994	3,430,119	623	35.9	61,450	20,040	81,488
1995	3,211,740	646	36.4	59,480	18,920	78,400
1996	2,842,111	651	36.8	54,860	18,980	73,840
1997	2,981,280	653	37.0	55,480	19,645	75,124
1998	3,319,300	659	37.3	52,230	20,565	72,795
1999	3,606,932	665	37.6	50,285	21,060	71,343
2000	3,491,934	673	37.8	51,130	21,185	72,314
2001	3,370,562	685	38.0	47,590	20,745	68,334
2002	3,004,318	699	39.0	43,330	18,200	61,529
2003	2,765,230	711	38.7	41,275	17,560	58,834

¹ This table gives a historical summary of selected statistics from Tables B-1 and D.

² "Days lost" are as paid in the period on current- and prior-year claims.

³ These statistics are based on short-term disability, long-term disability, and fatal claims first paid in the year. Health-care-only claims are not included.

⁴ The gender counts are rounded and, therefore, may not add up to the total.

**Injury Rates and Relief-adjusted Short-term Disability (STD) Durations
for Rateable Subsectors, 1999–2003**

Table B-2

Subsector ⁵	Description	Injury Rate (Number of Claims ¹ per 100 Person-years ² of Employment)					Relief-adjusted STD Duration ^{3,4} (Days per Claim)				
		1999 ⁶	2000 ⁶	2001 ⁶	2002 ⁶	2003	1999	2000	2001	2002	2003
7010	Agriculture	4	4	4	4	5	67	58	63	69	68
7020	Fishing ⁷						76	59	59	60	65
7030	Forestry	9	9	8	7	8	69	74	75	73	79
7040	Oil and Gas or Mineral Resources	3	3	3	3	3	89	84	81	73	74
7110	Food and Beverage Products	12	11	10	10	9	46	45	42	42	38
7120	Metal and Non-Metallic Mineral Products	10	10	9	8	7	42	38	38	37	39
7130	Petroleum, Coal, Rubber, Plastic, and Chemical Products	6	5	5	4	4	39	40	39	38	38
7140	Wood and Paper Products	6	5	5	4	4	59	56	54	55	55
7150	Other Products	4	4	3	3	3	39	36	39	41	42
7210	General Construction	8	7	7	7	7	61	60	61	59	62
7220	Heavy Construction	10	14	16	9	9	89	80	91	72	85
7230	Road Construction and Maintenance	5	5	5	4	4	76	73	74	68	71
7310	Warehousing	14	15	14	10	9	44	41	48	43	29
7320	Transportation and Related	9	9	9	8	7	64	62	64	62	64
7410	Retail	3	3	3	3	3	49	47	46	43	43
7420	Wholesale	3	3	2	2	2	39	33	38	39	44
7530	Public Administration	7	6	6	5	5	37	39	36	35	36
7610	Accommodation, Food, and Leisure Services	3	3	2	2	2	40	39	41	39	41
7620	Business Services ⁸	0	0	0	0	0	60	54	50	48	43
7630	Professional, Scientific, and Technical Services	1	1	1	1	1	53	43	50	53	56

Subsector ⁵	Description	Injury Rate (Number of Claims ¹ per 100 Person-years ² of Employment)					Relief-adjusted STD Duration ^{3,4} (Days per Claim)				
		1999 ⁶	2000 ⁶	2001 ⁶	2002 ⁶	2003	1999	2000	2001	2002	2003
7640	Other Services	5	5	4	4	4	50	47	48	47	47
7650	Education	2	2	2	2	1	43	41	42	38	33
7660	Health Care and Social Assistance	6	5	5	4	4	69	65	63	58	56
7670	Utilities	1	1	1	1	1	47	53	45	55	46
All Subsectors⁹		4.0	3.9	3.6	3.2	3.0	52	50	49	47	47

¹ The “number of claims” are those that received short-term disability, long-term disability, or survivor benefits either in the year of injury or in the first quarter of the following year.

² One person-year is the equivalent of 52 paid weeks of employment, whether worked by one individual or several. Subsector estimates of person-years are based on gross payrolls submitted by employers and on matching wage-rate data. In the past, the wage-rate data was based on Statistics Canada information published on the 1980 SIC (Standard Industrial Code) basis. The wage-rate data is now partly based on Statistics Canada information published on the NAICS (North American Industry Classification System) basis, and partly on the wage rates of STD claimants.

³ Relief-adjusted STD duration is a measure of the total days lost per claim on disability claims, including days lost in years beyond the year of injury. It is calculated according to a methodology established by the AWCBC. A number of different methods can be used to calculate duration, therefore comparisons of duration statistics from different sources should be made carefully.

The method used to produce the relief-adjusted STD duration shown in the above table is different from the method used to produce the duration shown in last year’s table. This year, the subsector and all-subsector durations are based solely on STD days. Last year, the durations were based on STD days plus some vocational rehabilitation days. This year, the subsector durations reflect an adjustment for days relieved under Section 39(1)(e) of the Act. The all-subsector durations published in the past years have always included days relieved under Section 39(1)(e). Section 39(1)(e) of the Act is applied when the Board believes days are lost from work because of a pre-existing condition.

⁴ Days lost for subsectors where compensation is frequently paid on a “calendar day” basis have been adjusted so that they are on the same “work day” basis as the other subsectors.

⁵ Where employers have been reclassified from one subsector to another, the above injury rates reflect the reclassification for all years. The durations reflect the reclassification as of the reclassification date. Reclassification has less effect on durations than on injury rates.

⁶ Revised figures.

⁷ Because of the difficulty in calculating estimates of person-years for subsector 7020 (most subsector 7020 employers don’t report gross payrolls in the same way as employers in other rated subsectors do), no injury rates are calculated for subsector 7020.

⁸ Injury rates of less than 0.5 are shown as 0.

⁹ The AWCBC basis for the overall injury rate changed in 2002. It was formerly “rated and self-insured employers”; it is now “rated employers only.”

An Analysis by Year of Injury of the Total Days Lost During 2003 and the Number of Short-term Disability¹, Long-term Disability², and Fatal Claims First Paid in 2003

Table C

Year of Injury	Number of Short-term Disability ¹ , Long-term Disability ² , and Fatal Claims First Paid in 2003	Total Days Lost in 2003 from all Claims ³
1947	-	216
1955	-	260
1956	-	387
1957	-	140
1960	-	220
1962	-	140
1963	-	243
1964	-	359
1965	-	93
1966	-	582
1967	-	8
1968	-	764
1969	-	452
1970	-	1,724
1971	-	1,037
1972	-	789
1973	2	694
1974	1	-964
1975	1	880
1976	-	1,046
1977	-	1,203
1978	2	1,182
1979	2	1,290
1980	1	2,873
1981	2	2,101
1982	2	1,935
1983	-1	2,532
1984	0	1,470

Year of Injury	Number of Short-term Disability ¹ , Long-term Disability ² , and Fatal Claims First Paid in 2003	Total Days Lost in 2003 from all Claims ³
1985	1	2,533
1986	3	1,053
1987	1	2,411
1988	6	3,785
1989	4	5,402
1990	6	8,921
1991	9	9,207
1992	6	10,795
1993	6	11,641
1994	10	15,258
1995	21	21,751
1996	27	28,175
1997	32	39,954
1998	58	52,917
1999	117	86,355
2000	337	148,554
2001	432	182,125
2002	4,837	707,063
2003	52,909	1,403,674
TOTAL	58,834	2,765,230

¹ *Short-term disability claims* is the term for what were described as *wage-loss claims* in earlier versions of this table.

² *Long-term disability claims* is the term for what were described as *permanent disability claims* in earlier versions of this table.

³ These figures are work days compensated in 2003 on all claims, not just claims first paid in 2003.

An Analysis by Sector¹ of Industry, Gender, and Age Group of the Short-term Disability², Long-term Disability³, and Fatal Claims First Paid in 2003

Table D

Age Group ⁴	Number of STD, LTD, and Fatal Claims First Paid									Total No. of Claims	Gender ⁴	
	Sector										Male	Female
	70	71	72	73	74	75	76	Deposit	Other ⁵			
19 and Under	120	510	230	105	715	25	890	15	0	2,610	1,855	755
20–24	385	1,420	790	405	1,275	105	1,940	60	0	6,380	4,780	1,600
25–29	335	1,380	760	505	955	170	2,015	155	0	6,275	4,670	1,605
30–34	375	1,510	925	665	880	330	2,265	245	0	7,195	5,330	1,865
35–39	380	1,585	920	830	990	340	2,655	320	0	8,020	5,665	2,355
40–44	410	1,685	995	865	1,045	415	3,035	450	0	8,900	6,115	2,785
45–49	395	1,310	685	750	715	375	2,980	425	5	7,645	5,040	2,605
50–54	265	1,000	455	565	520	295	2,390	355	5	5,850	3,710	2,140
55–59	210	645	340	460	365	160	1,525	180	15	3,890	2,575	1,315
60–69	110	335	200	255	185	40	745	50	10	1,930	1,410	520
Over 69	20	25	20	15	5	5	40	5	5	140	125	15
TOTAL	3,003	11,405	6,317	5,421	7,653	2,262	20,481	2,256	36	58,834	41,275	17,560
AVERAGE AGE	39	38	38	41	35	41	40	43		39	38	40

¹ For a complete description of the sector numbers, see “Classes of Industry” on page 54.

² *Short-term disability claims* is the term for what were called *temporary total claims* in earlier versions of this table.

³ *Long-term disability claims* is the term for what were called *permanent disability claims* in earlier versions of this table.

⁴ Claims uncoded to age and gender have been proportionately allocated, and the counts rounded to the nearest five. Therefore, columns and rows may not add up to the totals shown.

⁵ Includes claims not yet coded to a subsector and claims charged to Section 39 of the *Workers Compensation Act*.

An Analysis by Injury of the Short-term Disability, Long-term Disability, and Fatal Claims First Paid, 1999–2003

Table E

Injury	Number of STD, LTD, and Fatal Claims First Paid ¹						Days Lost ² , 1999–2003	Short-term Disability, Long-term Disability, and Survivor Benefits ³ , (Excludes Rehab and Health Care Costs), 1999–2003
	1999	2000	2001	2002	2003	1999–2003		
Abrasion	1,680	1,720	1,540	1,320	1,350	7,610	48,500	\$10,630,000
Amputation	320	330	280	330	330	1,590	206,200	\$72,330,000
Burn	1,300	1,320	1,270	1,130	990	6,010	83,000	\$17,720,000
Concussion	780	910	760	800	840	4,090	296,600	\$101,385,000
Contusion	7,170	7,720	7,230	6,450	6,120	34,690	859,400	\$243,816,000
Cut	7,690	7,630	7,350	6,980	6,670	36,320	676,100	\$131,592,000
Dislocation	460	470	380	380	390	2,080	179,600	\$33,712,000
Electric Shock, Electrocutation	70	90	80	70	60	370	18,400	\$13,074,000
Fracture	4,210	4,100	3,750	3,760	3,820	19,640	2,314,200	\$589,456,000
Hernia	480	450	440	430	380	2,180	115,500	\$12,937,000
Back Strain	17,870	18,190	17,430	15,180	14,150	82,820	3,695,200	\$687,982,000
Other Strain	21,160	21,360	20,860	18,630	18,110	100,120	5,350,800	\$886,261,000
Traumatic Tenosynovitis, Bursitis, and Related ⁴	2,300	2,360	1,810	1,510	1,450	9,430	736,700	\$124,157,000
Multiple Injuries	50	70	40	50	70	280	25,200	\$85,630,000
Other Injuries	100	100	100	60	120	480	28,800	\$51,327,000
Occupational Disease ⁴	5,700	5,500	5,010	4,450	3,990	24,650	1,604,800	\$381,408,000
TOTAL⁵	71,343	72,314	68,334	61,529	58,834	332,354	16,238,976	\$3,443,416,740

¹ Number of short-term disability, long-term disability, and fatal claims accepted in the year. Some of the figures for years prior to 2003 have been revised.

² “Days lost” are as paid in the period on current- and prior-year claims.

³ Includes short-term disability, long-term disability, and survivor benefits charged in the period on current- and prior-year claims. Includes the increase in widows’ pension entitlement arising from Bill 63 and the 1997 B.C. Supreme Court decision.

⁴ In this table, traumatic tenosynovitis, bursitis, and related conditions are shown as injuries. In earlier versions of this table, these were included in the “Occupational Disease” category.

⁵ The claim counts, days lost, and claim costs by injury category have been adjusted for the effect of uncoded claims and appear as rounded numbers. The columns, therefore, do not necessarily add up to the column totals shown.

**Back Strain Claims (Excluding Health-care-only Claims)
Paid for the First Time During 1994–2003**

Table F

Year	Number of Back Strain Claims ¹ First Paid in the Year	Total Number of Claims ¹ First Paid in the Year	Back Strain Claims ¹ as a % of Total Claims ¹	Days Lost ² in the Year on Back Strain Claims	Days Lost ² in the Year on All Claims	Days Lost ² on Back Strain Claims as a % of All Days Lost ²
1994	20,900	81,488	25.6%	923,000	3,430,119	26.9%
1995	19,760	78,400	25.2%	807,000	3,211,740	25.1%
1996	18,450	73,840	25.0%	694,000	2,842,111	24.4%
1997	18,780	75,124	25.0%	722,000	2,981,280	24.2%
1998	18,730	72,795	25.7%	811,000	3,319,300	24.4%
1999	17,870	71,343	25.0%	838,000	3,606,932	23.2%
2000	18,190	72,314	25.2%	789,000	3,491,934	22.6%
2001	17,430	68,334	25.5%	796,000	3,370,562	23.6%
2002	15,180	61,529	24.7%	673,000	3,004,318	22.4%
2003	14,150 estimate ³	58,834	24.1%	596,000 estimate ³	2,765,230	21.6%
1994–2003	179,440	714,001	25.1%	7,649,000	32,023,526	23.9%

¹ Excluding health-care-only claims. (*Health-care-only claims* is the term for what were called *medical-aid-only claims* in earlier versions of this table.)

² “Days lost” are as paid in the year on current- and prior-year claims.

³ Claims uncoded at year-end have been proportionately allocated to the back strain category. This figure is an estimate.

Assessment Statistics

Classes of Industry

Effective January 1, 2000, all industries within the scope of the *Workers Compensation Act* are divided into 11 classes. For administrative purposes, these classes are represented as sectors within the Board's classification structure, as follows:

Class 1: Primary Resources	Sector 70	Primary Resources
Class 2: Manufacturing	Sector 71	Manufacturing
Class 3: Construction	Sector 72	Construction
Class 4: Transportation and Warehousing	Sector 73	Transportation and Warehousing
Class 5: Trade	Sector 74	Trade
Class 6: Public Services	Sector 75	Public Sector
Class 7: General Services	Sector 76	Service Sector
Class 8: Canadian Airlines International Ltd., Canadian Pacific Hotels Corporation, Canadian Pacific Railway Company, Cominco Ltd.	Sector 81	Deposit Sector 8 (formerly Class 10)
Class 9: The Burlington Northern and Santa Fe Railway Company	Sector 82	Deposit Sector 9 (formerly Class 18)
Class 10: Air Canada, Canadian National Railway Company, Via Rail Canada Inc.	Sector 83	Deposit Sector 10 (formerly Class 12)
Class 11: British Columbia Assessment Authority, British Columbia Buildings Corporation, British Columbia Ferry Corporation, British Columbia Railway Company, Emergency Health Services Commission, Government of British Columbia, Workers' Compensation Board of British Columbia	Sector 84	Deposit Sector 11 (formerly Class 13)

Following is a detailed listing of the various industries to which the *Workers Compensation Act* applies:

SECTOR 70 PRIMARY RESOURCES

Subsector 7010 Agriculture

Apiary
Artificial Insemination or Animal Breeding
Berry Farming
Composting
Dairy Farming
Egg Farming
Exotic Poultry Farming
Farm Labour Supply or Farm Services
Feed Lot or Stockyard
Fur Bearing Animal Farming
Grain Farming
Greenhouse
Hay or Seed Farming
Hog Farming
Hunting or Trapping
Orchard
Ornamental Nursery
Poultry Catching
Poultry Farming
Poultry Hatchery
Ranch
Riding Academy or Boarding or Breeding or Raising Horses
Sod or Turf Nursery
Vegetable Farming
Vineyard
White Mushroom Farming
Wild Plant Harvesting

Subsector 7020 Fishing

Dive Fishing
Fin Fish Farming
Fish Hatchery
Fish Packing and Hand Picking
Gillnet and Troll Fishing
Longline and Trap Fishing
Seine Fishing
Shellfish Farming
Trawl Fishing

Subsector 7030 Forestry

Brushing and Weeding or Tree Thinning or Spacing
(not elsewhere specified)
Cable or Hi-Lead Logging
Chemical Brushing and Weeding or Chemical Tree Thinning or Spacing
Dry Land Sort
Forest Fire Fighting
Ground Skidding, Horse Logging, or Log Loading
Integrated Forest Management
Log Booming
Log Processing
Logging Road Construction or Maintenance
Manual Tree Falling and Bucking
Mechanized Tree Falling
Shake Block Cutting
Tree Planting or Cone Picking

Subsector 7040 Oil and Gas or Mineral Resources

Clay, Peat, Soil, or Topsoil Digging or Processing
Diamond Drilling, Seismic Drilling, or Shot Hole Drilling
Geological, Geophysical, or Geochemical Field Work
Oil and Gas or Mineral Exploration, or Prospecting
Oil or Gas Drilling

Oil or Gas Field Servicing (by means other than service rigs)
 Oil or Gas Well Servicing (by means of service rigs)
 Open Pit Coal Mining
 Open Pit Metal or Mineral Mining
 Placer Mining
 Quarry
 Seismic Exploration
 Stone Crushing
 Underground Coal Mining (*expired 2002.12.31*)
 Underground Mining (*formerly Underground Metal or Mineral Mining*)

SECTOR 71 MANUFACTURING

Subsector 7110 Food and Beverage Products

Abattoir
 Alcoholic Beverage Manufacture
 Animal Feed or Supplement Manufacture or Packaging
 Baked Goods Manufacture
 Butter, Cheese, or Ice Cream Manufacture
 Candy or Chocolate Manufacture
 Cereal, Biscuit, Taco or Rice Product, Pasta, or Other Dry Food Product Manufacture (not elsewhere specified)
 Coffee, Tea, Herb, or Spice Packaging or Manufacture
 Fish Canning
 Fish Processing or Fish Reduction
 Flour Mill or Rice Mill
 Food Product Manufacture (not elsewhere specified)
 Fruit or Vegetable Canning, Bottling, or Processing or Fruit or Vegetable Product Manufacture
 Ice Manufacture
 Liquid Dairy Product Manufacture
 Meat Canning or Canned Meat Product Manufacture
 Meat Cutting, Packing, or Processing

Non-Alcoholic Beverage Manufacture or Water Bottling
 Poultry Processing
 Sausage or Sausage Casing Manufacture
 Smoked, Cured or Prepared Meat Product Manufacture (not elsewhere specified)
 Sugar Refining and Packaging

Subsector 7120 Metal and Non-Metallic Mineral Products

Aircraft, Automobile, or Truck Assembly
 Auto Spring or Chain Manufacture
 Boiler, Tank, or Furnace Manufacture
 Cement Manufacture
 Ceramic or Terra Cotta Tile, Clay Brick, or other Ceramic or Clay Product Manufacture (not elsewhere specified)
 Commercial Marine Vessel Manufacture, Service or Repair
 Concrete Product Manufacture
 Control Panel Manufacture, Installation, Service, or Repair
 Die Casting
 Dry Dock or Marine Railway
 Electrical Switchgear or Transformer Manufacture, Installation, Service, or Repair
 Elevator or Escalator Manufacture, Installation, Service, or Repair
 Engine or Cylinder Manufacture or Rebuilding or Automobile Part Manufacture
 Fishing Tackle Manufacture
 Foundry
 Fuel Cell Manufacture
 Galvanizing, Electroplating, or Protection Plating
 Gypsum Product Manufacture
 Heavy Equipment, Machinery, or Parts Manufacture or Installation (greater than 500 lbs weight)
 Industrial Saw Blade Manufacture, Sharpening, Service, or Repair
 Light Industrial Equipment, Machinery, or Power Tool Manufacture (less than 500 lbs weight)

Lime Kiln or Lime Manufacture
 Machine Shop
 Metal Bed, Furniture, or Ladder Manufacture
 Metal Can or Tinware Product Manufacture
 Metal Door, Screen Door, or Aluminum Window
 Manufacture
 Metal Fastener Manufacture
 Metal Pipe or Fitting Manufacture
 Metal Product Manufacture (not elsewhere specified)
 Metal Railing or Gate Manufacture
 Metal Recycling
 Powder Coating or Metal Enamelling
 Precision Instrument Manufacture
 Ready Mix Concrete Manufacture and Delivery
 Sheet Metal Fabrication
 Smelter
 Soil, Topsoil, Peat, or Other Similar Gardening Material
 Packaging
 Stone or Marble Cutting, Dressing, Shaping, or
 Lettering, or Stone or Marble Product Manufacture
 Structural Concrete Product Manufacture
 Structural Metal Product Fabrication
 Tool and Die Making
 Truck Body or Trailer Manufacture
 Wire, Cable, or Other Wire Product Manufacture
 (not elsewhere specified)
 Wood Mill Saw Manufacture

**Subsector 7130 Petroleum, Coal, Rubber, Plastic, and
Chemical Products**

Acid, Base, Salt, Chemical, or Dye Manufacture
 (not elsewhere specified)
 Asphalt or Tar Roofing Product Manufacture
 Battery Manufacture
 Candle, Polish, or Other Wax Product Manufacture
 Chemical Pesticide or Herbicide Manufacture

Compressed or Liquefied Gas Manufacture
 Cosmetic Product or Beauty Aid Manufacture
 Drug, Vitamin, or Pharmaceutical Manufacture
 Explosives, Fireworks, or Munitions Manufacture
 Fertilizer Manufacture
 Fibreglass Insulation Manufacture
 Fibreglass or Cultured Marble Product or Acrylic
 Household Fixture Manufacture
 Foam Product Manufacture
 Glue or Adhesive Manufacture
 Industrial Rubber Belt Manufacture, Installation, Service,
 or Repair
 Ink Manufacture
 Oil or Gas Production
 Oil Refining, Oil Recycling, or Operation of Fuel
 Storage Tanks
 Paint, Putty, Stain, Sealant, Wood Filler, Varnish, or
 Waterproofing Agent Manufacture
 Petrochemical Manufacture
 Plastic Colour Concentrate Manufacture
 Plastic Film Extrusion and Flexible Packaging Manufacture
 Plastic or Rubber Recycling
 Plastic Product Manufacture (by blow moulding)
 Plastic Product Manufacture (by profile extrusion)
 Plastic Product Manufacture (by rotational moulding or
 liquid moulding)
 Plastic Product Manufacture (by thermoforming,
 injection moulding, or other moulding processes
 (not elsewhere specified)
 Post Extrusion Fabrication of Plastic Products
 Rubber Mat, Mattress, or Life Raft Manufacture
 Small Rubber or Plastic Product Manufacture
 Soap, Bleach, or Cleaning Compound Manufacture
 Synthetic Resin Compound Manufacture
 Tire Retreading or Recapping

Subsector 7140 Wood and Paper Products

Cardboard or Paper Container Manufacture
Chemical Pulp and Paper Mill
Coffin or Casket Manufacture
Custom Wood Kiln
Envelope Manufacture
Flush Door Manufacture
Furniture Refinishing or Restoration
Laminated Wood Structural Support Product Manufacture
Mechanical Pulp and Paper Mill
Oriented Strand Board Manufacture
Paper Product Manufacture (not elsewhere specified)
Paper Recycling or Cellulose Insulation Manufacture
Planing Mill
Portable Wood Mill
Prefabricated Log Home Kit Manufacture
Pre-Hung Door Assembly
Pressed Board Manufacture (not elsewhere specified)
Printing
Sawmill
Shake or Shingle Mill
Stationery Manufacture
Stile and Rail Door Manufacture
Upholstering
Veneer or Plywood Manufacture
Wood Chip Mill
Wood Preserving
Wood Window Manufacture
Wooden Box, Crate, Pallet, or Lath Manufacture
Wooden Component Manufacture
(not elsewhere specified)
Wooden Fence or Gate Manufacture
Wooden Furniture Manufacture
Wooden Moulding Manufacture
Wooden Musical Instrument Manufacture

Wooden Post or Pole Manufacture
Wooden Product Manufacture (not elsewhere specified)
Wooden Toy Manufacture
Wooden Truss Manufacture
Woodworking or Carpentry Shop

Subsector 7150 Other Products (not elsewhere specified)

Art, Craft, or Ornament Manufacture
Awning or Awning Sign Manufacture
Blind or Drapery Track Manufacture
Brush, Broom, or Mop Manufacture
Canvas or Nylon Product Manufacture
(not elsewhere specified)
Carpet or Rug Manufacture
Clock or Watch Manufacture
Clothing, Clothing Accessory, or Other Cloth Product
Manufacture (not elsewhere specified)
Commercial Sign Manufacture
Cord, Rope, or Net Manufacture
Cushion or Stuffed Toy Manufacture
Custom Tailoring
Drapery Manufacture
Electric or Electronic Product or Component
Manufacture (not elsewhere specified)
Eyewear Manufacture
Fabric Manufacture
Footwear Manufacture
Fur Product Manufacture
Gasket or Filter Manufacture
Glass Recycling or Glass Brick, Bottle, or Other
Container Manufacture
Glass Shop, Window Installation, or Window Glass
Repair or Replacement
Illuminated or Electronic Sign Manufacture
Jewellery or Trophy Manufacture

Leather Product Manufacture
 Lighting Fixture Manufacture
 Luggage Manufacture or Repair
 Marine Pleasure Craft Manufacture
 Mattress Manufacture
 Modular or Prefabricated Building Manufacture
 (not elsewhere specified)
 Orthotics or Prosthetics Manufacture, Sales, Service,
 or Repair
 Shoe Repair Shop or Leather Goods Repair
 Tannery
 Taxidermy
 Vinyl Window Manufacture

SECTOR 72 CONSTRUCTION

Subsector 7210 General Construction

Asbestos Abatement
 Blasting or Avalanche Control
 Building Demolition
 Cellular, Microwave, Radar, or Transmission Tower
 Erection, Installation, Service, or Repair
 Commercial Refrigeration or Commercial Air
 Conditioning Work
 Commercial Tank or Boiler Installation or Removal
 Concrete Cutting or Coring
 Concrete Placing, Finishing, Surfacing, or Repair
 Concrete Pumping
 Concrete Reinforcing
 Construction Labour Supply or General Labour Supply
 (not elsewhere specified)
 Crane Operation
 Deck, Railing, or Fence Installation
 Decking Application or Waterproofing
 Dredging
 Drywalling or Acoustic Board Installation

Electrical Work
 Finishing Carpentry
 Fire and Flood Restoration
 Floor Covering Installation (not elsewhere specified)
 Framing or Residential Forming
 Hardwood Floor Laying or Refinishing
 House or Other Wood Frame Construction or
 Renovation Work
 Industrial, Commercial, Institutional, or Highrise
 Residential Construction
 Insulation Work or Fireproofing
 Interior Decorating
 Land Clearing, Excavation, or Site Surface Preparation
*(formerly Land Clearing, Excavation, or
 Site Development)*
 Lathing
 Log Home Construction
 Low Slope Roofing
 Masonry
 Mechanical Insulation
 Oil or Gas Pipeline Construction or Repair
 Overhead Door Installation
 Painting or Wallpapering
 Plastering or Stucco Work
 Plumbing, Heating, Vent, Residential Air Conditioning, or
 Central Vacuum System Installation or Repair
 Pool, Spa, or Hot Tub Installation or Structural Repair
 Power Pole, Powerline, or Transmission Line Installation,
 Service, or Repair
 Prefabricated Steel Building Construction
 Scaffolding, Tent, Staging, or Display Booth Rental
 and Installation
 Siding, Awning, or Gutter Installation, Service, or Repair
 Sign Installation, Service, or Repair
 Steep Slope Roofing
 Structural Concrete Forming

Tile Work or Terrazzo Laying
Water Well, Foundational, or Directional Drilling
Welding Services or Ornamental Metal Installation

Subsector 7220 Heavy Construction

Bridge, Overpass, or Viaduct Construction or Repair
House Raising or Structural Moving of Buildings or
Heavy Equipment
Pier, Wharf, or Dry Dock Construction or Repair
Pile Driving
Steel Frame Erection or Structural Repair of Steel Frames
Steel Frame Painting, Bridge Painting, or Bridge Cleaning
Structural Concrete Reservoir, Flume, Dam, Dyke,
Causeway, or Jetty Construction or Repair
Tunnelling

Subsector 7230 Road Construction or Maintenance

Earth and Rock Filled Structure Construction
Highway Maintenance (routine maintenance of all
aspects of a specific section of highway)
Highway, Road, or Parking Lot Painting
Paving Services or Asphalt Manufacture
Railway Construction, Maintenance, or Demolition
Road Construction (not elsewhere specified)
*(formerly Road Construction or Maintenance —
not elsewhere specified)*
Snow or Ice Removal
Street Cleaning
Traffic Control

SECTOR 73 TRANSPORTATION AND WAREHOUSING

Subsector 7310 Warehousing

Cold Storage Plant
Grain Elevator Operation
Recycling Depot
Warehouse Operation

Subsector 7320 Transportation and Related Services

Aircraft Fueling
Aircraft Handling
Airport
Armoured Car Service
Auto Towing
Aviation or Flying School
Barge, Tug, or Other Water Transport of Goods
(not elsewhere specified)
Bus Line or Chartered Bus Tours
Courier Services
Distribution Centre
Dump Truck Operation
Ferry Service
Fixed Wing Aerial Work or Other Specialty Air Operations
(not elsewhere specified)
Fixed Wing Instrument Flight Rule Operation
Fixed Wing Visual Flight Rule Operation
Garbage, Debris, Industrial Waste, or Recyclable
Material Removal
General Trucking (not elsewhere specified)
*(formerly General Trucking — not elsewhere
specified — or Domestic Freight Forwarding)*
General Wharf Operations
Harbour Commission or Port Authority
Helicopter Aerial Work (not elsewhere specified)
Helicopter Instrument Flight Rule Operation
Helicopter Logging
Helicopter Visual Flight Rule Operation
Limousine, Chauffeur, or Handydart Services
Loading or Unloading Goods (not elsewhere specified)
Log Hauling
Log Towing
Marine Bulk Terminal
Marine Container Terminal
Marine Piloting

Mobile Home or Boat Towing
Moving and Storage
Newspaper, Magazine, or Flyer Distribution or Contract
 Mail Delivery
Pilot Car or Auto Delivery Services
Railway
Ship Docking
Stevedoring
Taxi Service
Water Taxi or Crew Transport

SECTOR 74 TRADE

Subsector 7410 Retail

Aircraft and Aircraft Equipment Sales and Leasing
Auctioning Services
Auto Parts Supply (*new CU effective 2003.01.01*)
Auto Sales (no service)
Bicycle Shop or Sports Equipment Rental
Butcher Shop
Car or Truck Rental
Department Store
Eyewear Sales or Repair
Firewood Yard
Garden or Landscaping Supply
Gas Bar
General Retail (not elsewhere specified)
Home Improvement Centre
Jewellery, Clock, Watch, or Trophy Sales and Repair or
 Key Cutting
Light Industrial Equipment, Machinery, or Power Tool
 Rental (less than 500 lbs weight)
Mobile Home Sales or Installation
Music Shop
Party Supply

Retail Art Gallery and Picture Framing
Retail Bakery or Delicatessen
Retail Brewing or Wine Making Shop
Retail Confectionery
Satellite TV Dish Sales, Service, or Installation
Supermarket

Subsector 7420 Wholesale

Chemical Wholesale
Clothing, Linen, or Other Textile Wholesale
Drug, Vitamin, Pharmaceutical, or Beauty Aid Wholesale
Electrical, Plumbing or Heating Supplies, or Packaged
 Building Supplies, Hardware, or Other Metal
 Product Wholesale
Electronic Equipment or Light Equipment, Machinery, or
 Parts Wholesale (less than 500 lbs weight)
Film Distribution
Fish Wholesale
Food, Beverage, or Tobacco Product Wholesale
Hay, Seed, Dry Animal Feed, or Other Similar Farm
 Product Wholesale
Log Wholesale Trading
Lumber, Plywood, Gyproc, Brick, or Other Similar
 Building Material Wholesale
Medical or Dental Supplies Wholesale
Packaged Petroleum Product Wholesale
Steel or Metal Wholesale (primary form)
Wholesale (not elsewhere specified)

SECTOR 75 PUBLIC SECTOR

Subsector 7530 Public Administration

EI Job Creation
Indian Band and Related Operations
Law Enforcement
Local Government and Related Operations

SECTOR 76

SERVICE SECTOR

Subsector 7610

Accommodation, Food, and Leisure Services

Airline Catering
Amusement Facility (not elsewhere specified)
Arcade
Auto Race Course
Bed and Breakfast
Billiard or Pool Hall
Bingo, Casino, or Other Gaming Operations (*CU expired 2002.12.31*)
Bingo Operations (*new CU effective 2003.01.01*)
Bowling Centre (*formerly Bowling Alley*)
Cabin, Cottage, Lodge, Resort, or Other Overnight Rental Accommodation (not elsewhere specified)
Campground
Casino or Other Gaming Operations (not elsewhere specified) (*new CU effective 2003.01.01*)
Catering Services (not elsewhere specified)
Chartered Boat Tours
Circus, Carnival, Rodeo, or Mechanical Amusement Ride
Coffee Shops, Ice Cream Parlours, or Other Food Concessions (not elsewhere specified)
Fitness Centre, Gym, or Health Centre
Golf Course, Driving Range, Pitch and Putt, or Lawn Bowling Facility
Guided Tour (not elsewhere specified)
Hair Styling Establishment or Esthetic Services
Hall Rental
Horse Race Course
Hotel
Industrial Catering
Live Performance Production House
Live Performance Road House
Marina or Boat Rental
Massage Parlour, Steam Bath, or Escort Services

Mini Storage
Mobile Catering
Motel
Movie Theatre or Drive-In Theatre
Organizing a Leisure, Social, or Sport Club
Organizing or Conducting Special Events (not elsewhere specified)
Organizing or Operating a Private Camp
Outdoor Sport Tour
Park, Campground or Trail Maintenance
Parking Lot or Valet Parking
Performing Arts
Private Park, Garden, or Zoo
Property Management, Building Rental, or Mobile Home Parks and Strata Corporations
Pub, Bar, Night Club, or Lounge
Public Art Gallery, Museum, or Other Special Interest Building Operation or Related Services
Resort Timeshare Operations (*new CU effective 2003.01.01*)
Restaurant or Other Dining Establishment
Rooming House or Hostel
Ski Hill or Gondola Ride
Sports Administration
Sports and Entertainment Facility (*formerly Sport Facility*)
Sports Instruction School
Tanning Salon
Travel Agency or Accommodation Registry

Subsector 7620

Business Services

Accounting (*formerly Accounting or Bookkeeping*)
Actuarial Services
Administration of an Operation Conducted Outside BC
Advertising or Public Relations Services
Broker (not elsewhere specified) or Wholesale (no stock of goods in BC)

Business Consulting
 Call Centre
 Chamber of Commerce
 Cheque Cashing
 Clerical Worker Supply
 Commercial Stock Audit
 Constituency Office, Consulate, Foreign Embassy, or
 MLA Office
 Custom Brokerage or Freight Forwarding (excluding
 handling of goods) (*formerly Custom Brokerage or
 International Freight Forwarding — excluding
 handling of goods*)
 Custom Brokerage or International Freight Forwarding
 (including handling of goods)
 Data Processing
 Digital Printing
 Employers' Association, Marketing Board, or Better
 Business Bureau
 Employment Agency or Aptitude Testing
 Environmental Conservation Services
 Financial or Lending Institution
 Franchisor Services
 Graphic Design
 Insurance or Bonding Services
 Law Office, Notary Public, Labour Relations, or
 Supplementary Legal Services
 Marine Cargo Inspection
 Marine Ship Agency and Related Services
 Market Research
 Modeling, Booking, or Talent Agency
 Mortgage Brokerage
 Packaged Office Service
 Private Investigation, Process Serving, Collection, or
 Bailiff Services
 Product Demonstration

Professional Association
 Property Management (administration only)
 Publishing (with printing)
 Real Estate Agency
 Real Estate Appraisal or Appraisal Services
 (not elsewhere specified)
 Records Storage
 Research Services (not elsewhere specified)
 Security or Stock Brokerage, Financial Planning, or
 Investment Services
 Ship Chandlery or Ship Husbandry
 Telemarketing
 Telephone Answering Service
 Translating or Interpreting Services
 Union
 Venture Capital Investment
 Writing, Publishing, or Map Production (no printing)

Subsector 7630

Professional, Scientific, and Technical Services

Air Navigation Support
 Animal Humane Society or Wildlife Rehabilitation
 Animal Training
 Architectural Drafting or Design
 Building or Home Inspection
 Computer Consulting or Custom Computer Programming
 Computer Software Package Design and Production
 Computer Software, Audio, or Video Duplicating or
 Document Scanning Services
 Construction Management Consulting
 Consulting (not elsewhere specified)
 Consulting Engineering
 Dental Laboratory
 Domestic Animal Breeding or Boarding
 Electrical Corrosion Control
 Farrier Services

Forest Management Services (*formerly Forest Management Consulting*)
 Geological, Geophysical, or Geochemical Consulting or Analysis
 Industrial Testing
 Interior Design Consulting
 Land Surveying
 Log Scaling
 Marine Vessel Surveying
 Medical Diagnostic Laboratory
 Motion Picture, Commercial, or Television Post Production
 Motion Picture, Commercial, or Television Production
 Pet Grooming
 Photo Film Processing or Microfilming
 Photography Studio or Photographic Services
 Pipeline or Heavy Equipment Inspection
 Recording Studio
 Scientific Research Laboratory
 Television or Radio Broadcasting
 Veterinary Hospital or Veterinary Services

Subsector 7640 Other Services (not elsewhere specified)

Aircraft Maintenance or Repair
 Armature Winding for Small Motors
 Auto Dealership (sales and service)
 Auto Glass Shop
 Auto Recycling
 Auto Service or Repair
 Autobody Shop
 Automatic Door or Gate Installation, Service or Repair
 Bindery
 Blind or Drapery Cleaning
 Blind or Drapery Track Installation
 Car Wash or Auto Detailing
 Carpet, Rug, or Upholstery Cleaning Using Portable Equipment

Cemetery or Crematorium
 Chimney Cleaning
 Commercial Cleaning or Janitorial Services
 Commercial Diving
 Commercial Laundry or Linen, Uniforms, or Diaper Supply
 Commercial Retail Sign Shop or Document Copying Services
 Creek or Stream Enhancement
 Daycare Centre, Preschool, or Playschool
 Domestic Cleaning
 Dry Cleaning Facility or Laundromat
 Farm Equipment or Parts Sales, Service, or Repair (greater than 500 lbs weight)
 Fire Prevention Equipment Sales, Service, Installation, or Inspection
 Fish Enhancement
 Fruit or Vegetable Packing or Packaging
 Funeral Undertaking
 Furnace, Duct, or Air Vent Cleaning and Servicing
 Heavy Equipment or Machinery Rental (greater than 500 lbs weight) (*formerly Heavy Equipment or Machinery Rental — excluding scaffolding supply and installation*)
 Heavy Equipment, Machinery, or Parts Sales, Service, or Repair (greater than 500 lbs weight) (not elsewhere specified)
 Hiring or Providing Domestic Childcare
 Hiring Workers for Own Home Maintenance
 Home Support Services
 Knife, Scissor, Handsaw, or Hand Tool Sharpening
 Land Pollution Control
 Landscaping or Installation of Lawn Irrigation Systems
 Lawn Maintenance, Garden Maintenance, or Weed Control
 Light Industrial Equipment, Machinery or Parts, or Power Tool Service or Repair (less than 500 lbs weight)

Locksmithing
 Mailing or Addressing Services
 Major Household Appliance or Stationary Business
 Machines or Medical Equipment Service, Repair,
 or Installation
 Marine Pollution Control
 Marine Salvage, Marine Log Salvage, or Marine
 Garbage Collection
 Ornamental Plant Rental or Office Plant Services
 Paper Shredding
 Pest Control or Fumigation (not elsewhere specified)
 (formerly Structural Pest Control or Fumigation)
 Plastic Laminating, Packing, or Packaging
 (not elsewhere specified)
 Pleasure Boat, Motorcycle, Snowmobile, or Other
 Leisure Craft Sales and Service
 Pool, Spa, or Hot Tub Service
 Portable Electronic Equipment or Small Household
 Appliance Service or Repair
 Recreational Vehicle Sales, Service, or Rental
 Security Alarm System Sales, Service, Installation, and
 Repair or Telecommunication, Cable TV, or Other
 Similar Wiring
 Security or Patrol Services
 Septic Tank, Sewer, or Sewage Disposal System Services
 Service Station
 Social Companion Services
 Steam Cleaning, Sandblasting, or Pressure Washing of
 Buildings, Pools, or Parking Lots
 Steam Cleaning, Sandblasting, or Pressure Washing of
 Heavy Equipment
 Structural Repair of Marine Pleasure Craft
 Tree Services (not directly related to the forestry industry)
 Vending Machine or Amusement Machine Distribution
 Washing Machine or Dryer Distribution (coin-operated)
 Window, Gutter, or Awning Cleaning

Subsector 7650

Education

College, Trade School, or Vocational School
 Driving School
 Independent or Private Primary or Secondary School
 Library or Resource Centre
 Non-Academic School (not elsewhere specified)
 Public School District
 Tutoring Service
 University

Subsector 7660

Health Care and Social Assistance

Acute Care
 Alcohol or Drug Treatment Centre
 Alternative Health Care
 Ambulance or First Aid Services
 Chiropractic Services, Chiropractic Care, or
 Chiropractic Practice
 Community Health Support Services
 Counselling or Social Services (not elsewhere specified)
 Dentistry or Ancillary Dental Services
 Fundraising or Charitable Organization
 Life and Job Skills Training
 Long Term Care
 Massage Therapy (licensed)
 Medical Clinic or Medical Practice
 (not elsewhere specified)
 Optometry
 Physiotherapy or Occupational Therapy
 Religious Organization
 Residential Social Service Facility
 Retirement Home or Seniors' Home (accommodation only)
 Short Term Care
 Supplementary Health Care
 Surgical Centre

Subsector 7670 Utilities
Cable Television Service
Electric Utilities
Gas Utilities
Internet Services
Oil or Gas Transmission (oil or gas pipeline)
Telephone or Telecommunication Services

SECTOR 81 DEPOSIT SECTOR 8 (formerly Class 10)

Subsector 8108 Deposit Sector 8 (formerly Class 10)
Building Construction
Canadian Airlines International Ltd.
Canadian Pacific Hotels Corporation
Canadian Pacific Railway Company
Cominco Ltd.
Express
Trucking and Hauling
Water Transportation

SECTOR 82 DEPOSIT SECTOR 9 (formerly Class 18)

Subsector 8209 Deposit Sector 9 (formerly Class 18)
The Burlington Northern and Sante Fe Railway Company

SECTOR 83 DEPOSIT SECTOR 10 (formerly Class 12)

Subsector 8310 Deposit Sector 10 (formerly Class 12)
Air Canada
Canadian National Railway Company
Via Rail Canada Inc.

SECTOR 84 DEPOSIT SECTOR 11 (formerly Class 13)

Subsector 8411 Deposit Sector 11 (formerly Class 13)
British Columbia Assessment Authority
British Columbia Buildings Corporation
British Columbia Development Corporation
British Columbia Ferry Corporation
British Columbia Harbours Board
British Columbia Railway Company
British Columbia Systems Corporation
Canada — British Columbia Employment Development Programme
Dental Technicians' Board
Emergency Health Services Commission
Employment Bridging Assistance Programme
First Aid Ski Patrol
Government of British Columbia
Learners in Vocational Training School
Liquor Distribution Branch
Provincial Emergency Programme
Railwest Manufacturing Company
Workers' Compensation Board of British Columbia

Assessment Statistics (Rateable Employers)

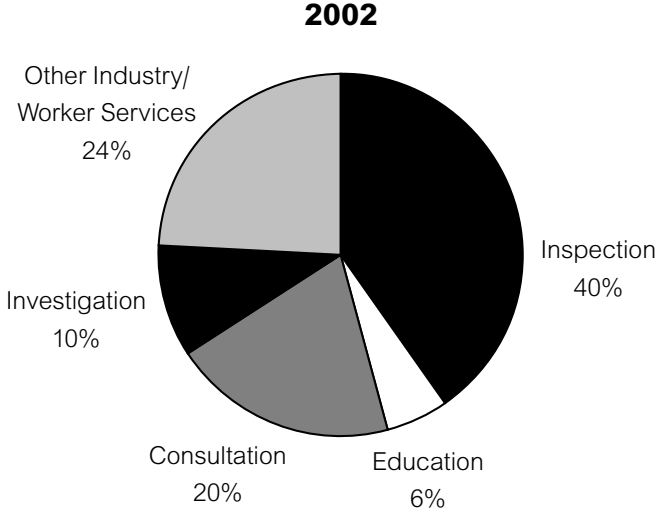
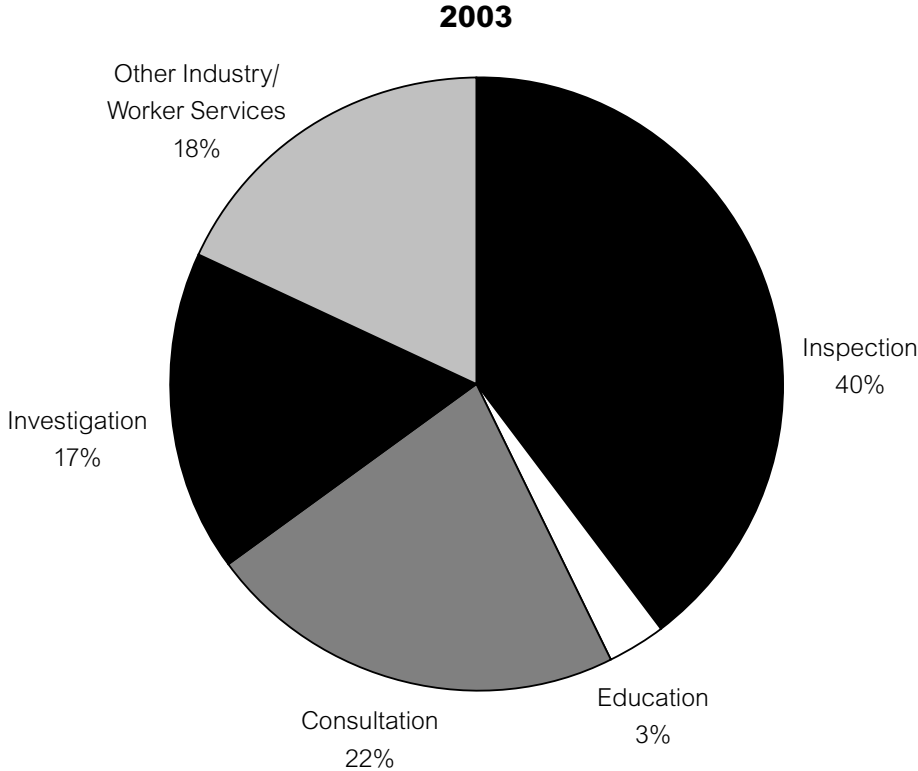
The following statistics are in respect of Rateable Employers only (i.e. excluding Self-Insured Employers and the Federal Government). Assessable payroll includes those portions of earnings up to the maximum wage rate — \$59,600 in 2002 and \$60,100 in 2003. Assessment statistics for the past ten years are as follows:

Year	Number of Employers at December 31	Assessable Payroll ¹	Premiums ¹	Maximum Wage Rate
1994	139,601	\$38,550,000,000	\$834,439,000	\$51,300
1995	146,293	\$40,411,000,000	\$924,078,000	\$52,400
1996	152,316	\$41,948,000,000	\$961,774,000	\$54,200
1997	156,233	\$43,935,000,000	\$975,030,000	\$55,800
1998	161,770	\$45,045,000,000	\$907,047,000	\$56,900
1999	164,963	\$46,483,000,000	\$873,983,000	\$57,500
2000	166,501	\$48,761,000,000	\$842,012,000	\$58,000
2001	169,650	\$50,069,000,000	\$892,097,000	\$58,500
2002	171,583	\$51,204,000,000	\$960,104,000	\$59,600
2003 (estimated)	173,008	\$52,252,000,000	\$1,003,151,000	\$60,100

¹ The Assessable Payroll and Premiums shown above for 1999 and prior years differ from the numbers shown in the 1999 and earlier editions of this table because the figures in the earlier editions included Rateable Employers, Self-Insured Employers, and the Federal Government, whereas the above data is for Rateable Employers only.

Prevention Statistics

Breakdown of Field Officers' Worksite Time



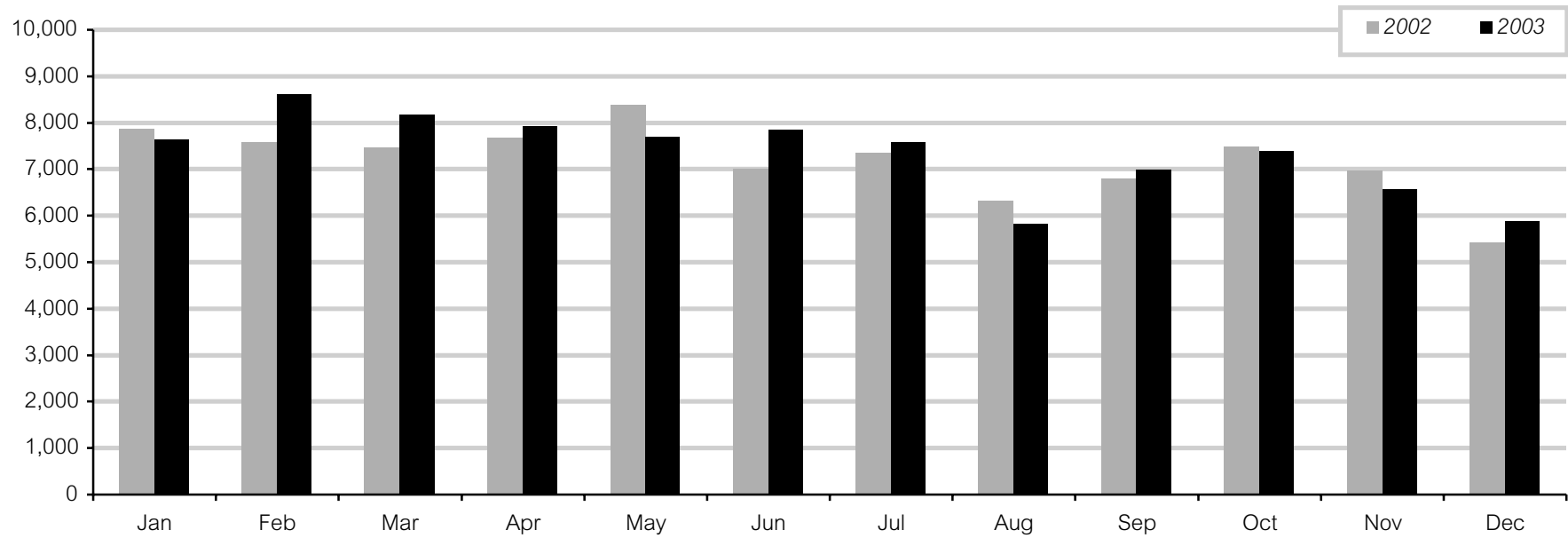
Prevention Division — Field Officers' Time

Worksite Activity (Hours)	2003	2002	% Change
Inspection	88,843	108,517	-18.1%
Education	7,287	15,049	-51.6%
Consultation	48,499	55,220	-12.2%
Investigation	38,432	28,347	35.6%
Other Industry/Worker Services	40,261	66,016	-39.0%
Total Worksite Hours	223,321	273,149	-18.2%

Document Type	2003	2002
Inspection Reports	16,310	22,015
Education Reports	841	1,575
Contact Records	15,294	17,041
Number of Orders Written	24,176	34,168

NOTE: This activity does not include the additional consultation and education activity provided by the Industry Services Department.

Prevention Division Call Centre — Number of Calls Received



The Prevention Division call centre is responsible for receiving and routing calls to Prevention specific resources. The majority of calls are requests for health and safety information or advice. These calls are routed to field officers for response.

Calls Received

	2003	2002	% change
Average calls per month	7,346	7,194	2.1%

Occupational Hygiene Technical Services

Laboratory Analyses

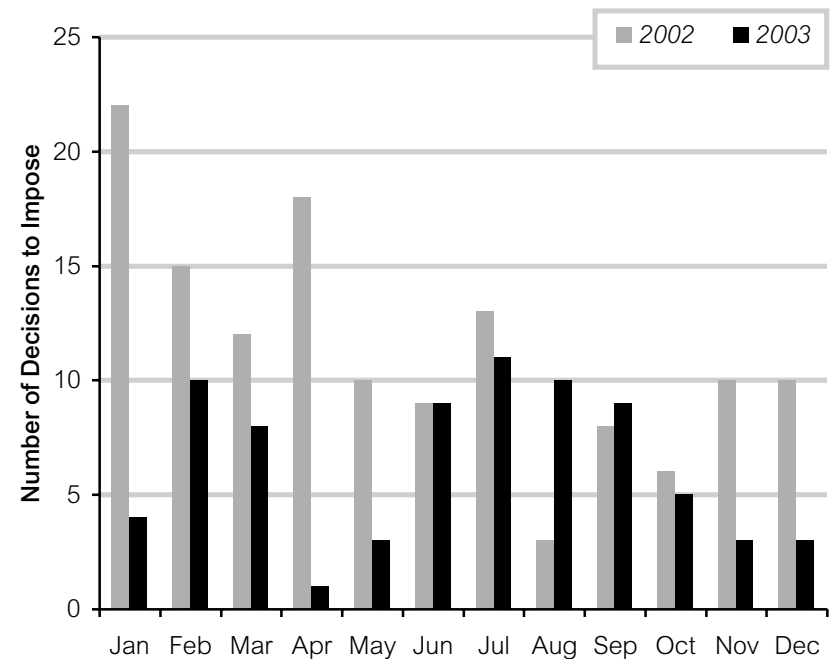
Number of	2003	2002
Samples	895	1,118
Compliance Determinations	2,309	4,000
Quality Assurance Analyses	141	327
Field Equipment Transactions	1,637	1,933

Compliance and Investigation Activity

	2003	2002	% Change
Administrative Penalties			
Penalties Recommended	135	138	-2.2%
Penalties Imposed (\$)	\$620,324	\$1,764,200	-64.8%
Warning Letters Issued	279	496	-43.8%
Discrimination Complaints			
Complaints (Number of)	121	142	-14.8%

NOTE: This information reflects Prevention Division activity. The appeals process may further affect this data.

Penalties



For more information about the WCB and its activities, refer to the following publication:

Workers' Compensation Board of British Columbia 2003 Annual Report and 2004–2006 Service Plan

This comprehensive report contains operational highlights, financial reviews, and the administrative activities of the WCB.

To order

For copies of the *2003 Statistics* report or the *2003 Annual Report and 2004–2006 Service Plan*, contact:

Publications and Videos Distribution

WCB Customer Service

Toll free: 1 866 271-4879

Fax: 1 866 362-3130

E-mail: moore-wcb.customer.service@ca.moore.com

Internet: www.WorkSafebc.com