



MSI risk factors

Risk factors are aspects of the task that could cause injury to workers.

Risk factors



Forceful exertion:
 Such as lifting, pushing, pulling, or carrying.



Awkward posture:
 Extreme stretched-out postures, such as overhead reaching.



Awkward posture:
 Extreme stretched-out postures, such as bending or stooping.



Awkward posture:
 Extreme stretched-out postures, such as twisting.



Contact stress:
 Continuous pressure from a hard surface or sharp edge on a part of the body.

Repetition and duration:
 Using similar body motions all the time, such as reaching up or bending over.

Contributing factors are aspects of the work environment that create risk factors.

Contributing factors



Object handled:
 Large, bulky objects without a convenient place to grip object.



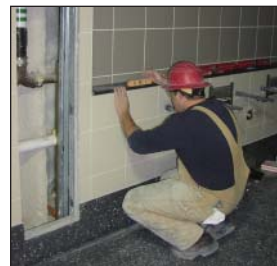
Object handled:
 Long, awkward objects and materials.



Work environment:
 Work by reaching forward, overhead, and at floor level.



Work environment:
 Floor surfaces are slippery and/or cluttered.



Work environment:
 Seating is not available.

Work organization:
 Limited breaks between types of tasks.
 Pace of work is too quick and beyond the control of workers.

Photos courtesy of: Heather Kahle (WorkSafeBC), Sebrina Somers (University of Washington), Mary Ellen Flanagan (University of Washington) and, New York Laborers' International Union of North America, and Occupational & Industrial Orthopaedic Center (OIOC) NYU Health Hospital for Joint Diseases.