

Fatalities on Resource Roads 1999-2009 Statistics¹

On February 8, 2003, two trucks collided on a narrow logging road near Burns Lake, BC. Craig Payne, a veteran truck driver, was killed instantly, when a load of logs crashed through his cab. This tragic workplace incident is, unfortunately, one of many that have occurred on BC's complex network of resource roads. Though every workplace accident is preventable, achieving an acceptable standard for safety on resource roads has been a complex and challenging process.

Over a 10-year period (1999 to 2009), motor vehicle incidents have claimed 68 lives in the Forestry and Oil/Gas industries. The most common types of vehicles involved in resource road fatalities are log trucks 47% and pickup trucks/crummy 41%. The most frequent type of collision was rollovers, accounting for nearly 64% of fatalities.

Failure to wear seatbelts resulted in ejection from the vehicle, drowning as the result of no seatbelt, and jumping from the truck. This was a contributing factor in many of the fatalities.

Figure 1. Number of Fatalities – Resource Roads vs Highway

WorkSafeBC 2009

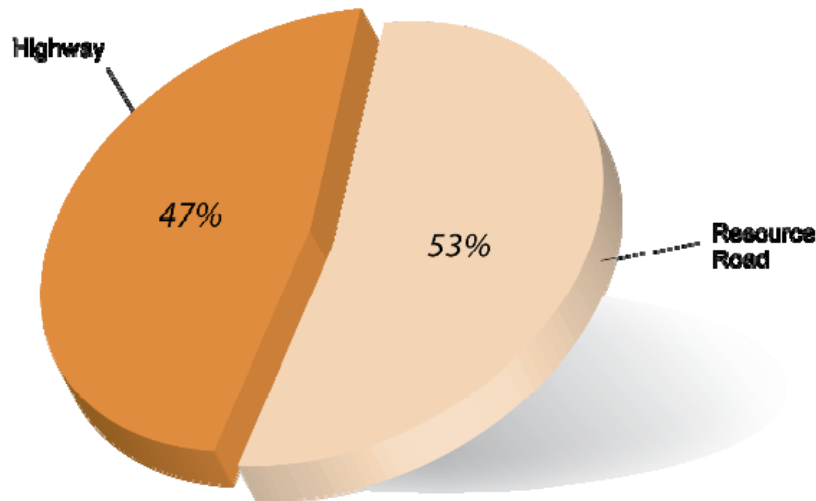
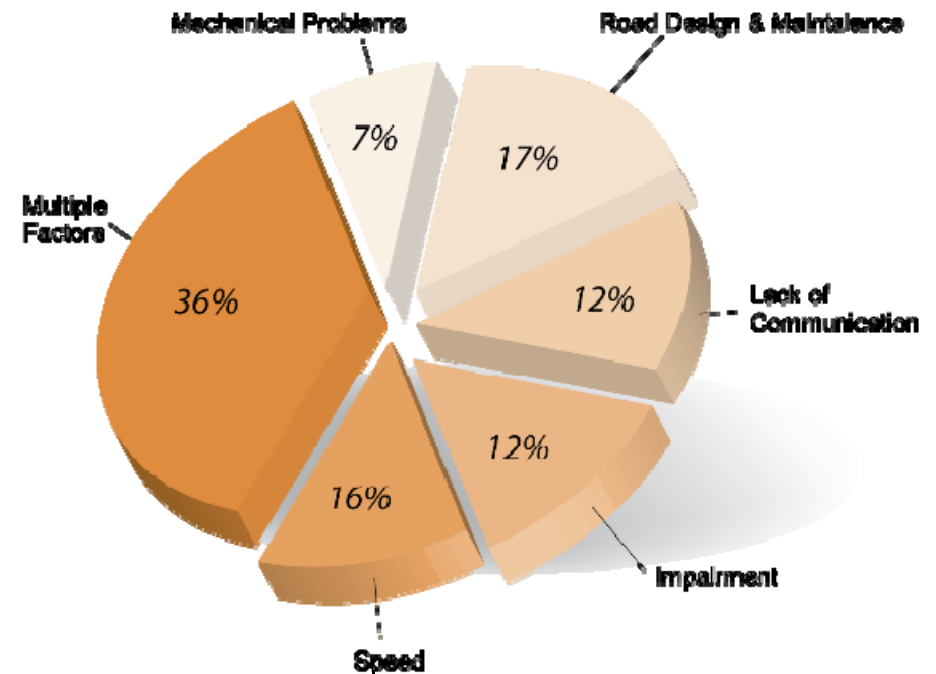


Figure 2. Crash Causation Factors

WorkSafeBC 2009



¹ Resource Road Demonstration Project's final report, pages 17-19.

Figure 3. Occupations

WorkSafeBC 2009

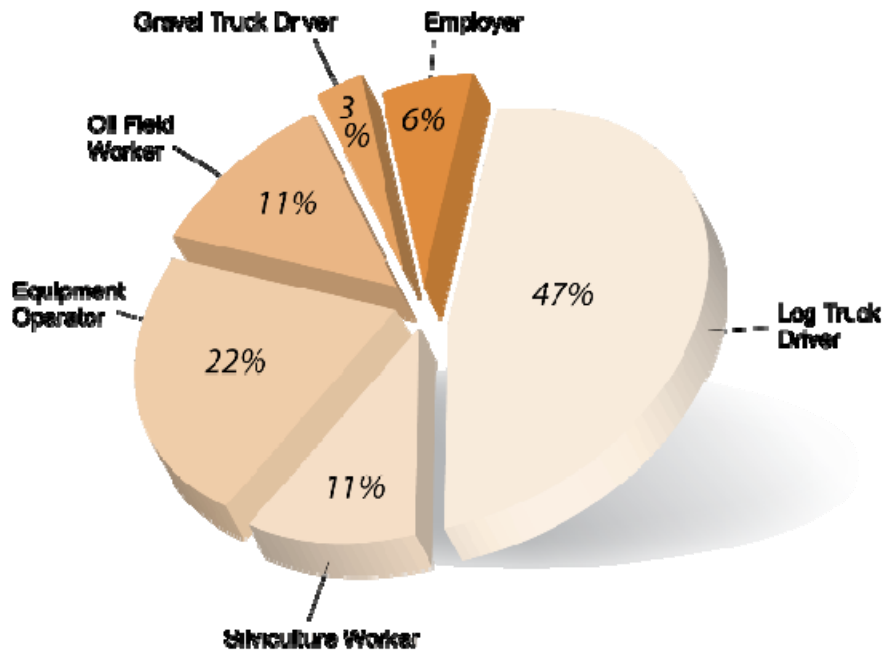


Figure 4. Type of Collision

WorkSafeBC 2009

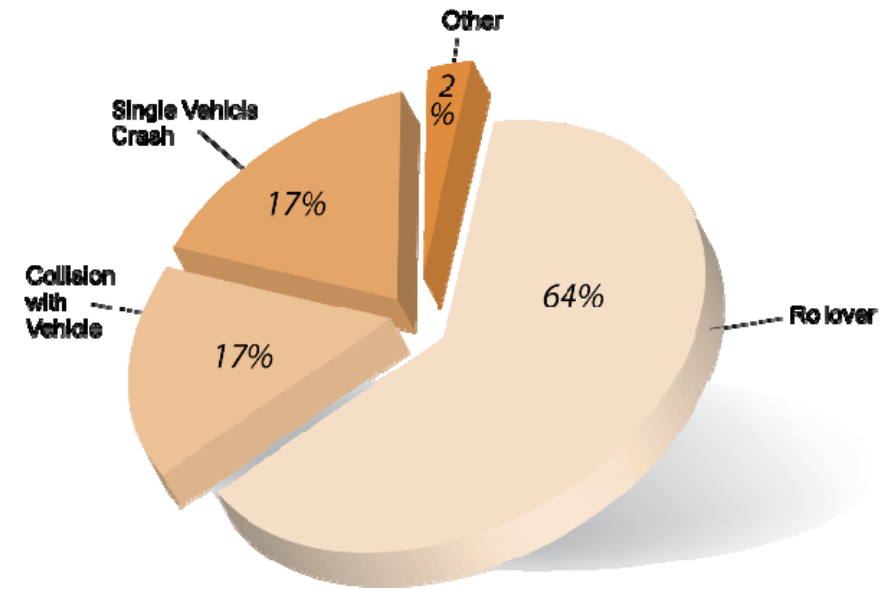


Figure 5. Type of Vehicle

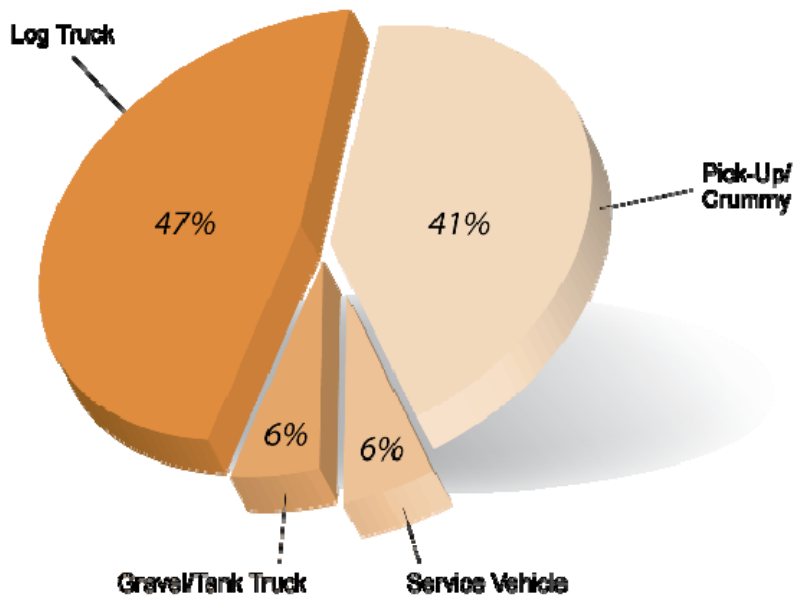


Figure 6. Contributing Factors to Injuries

