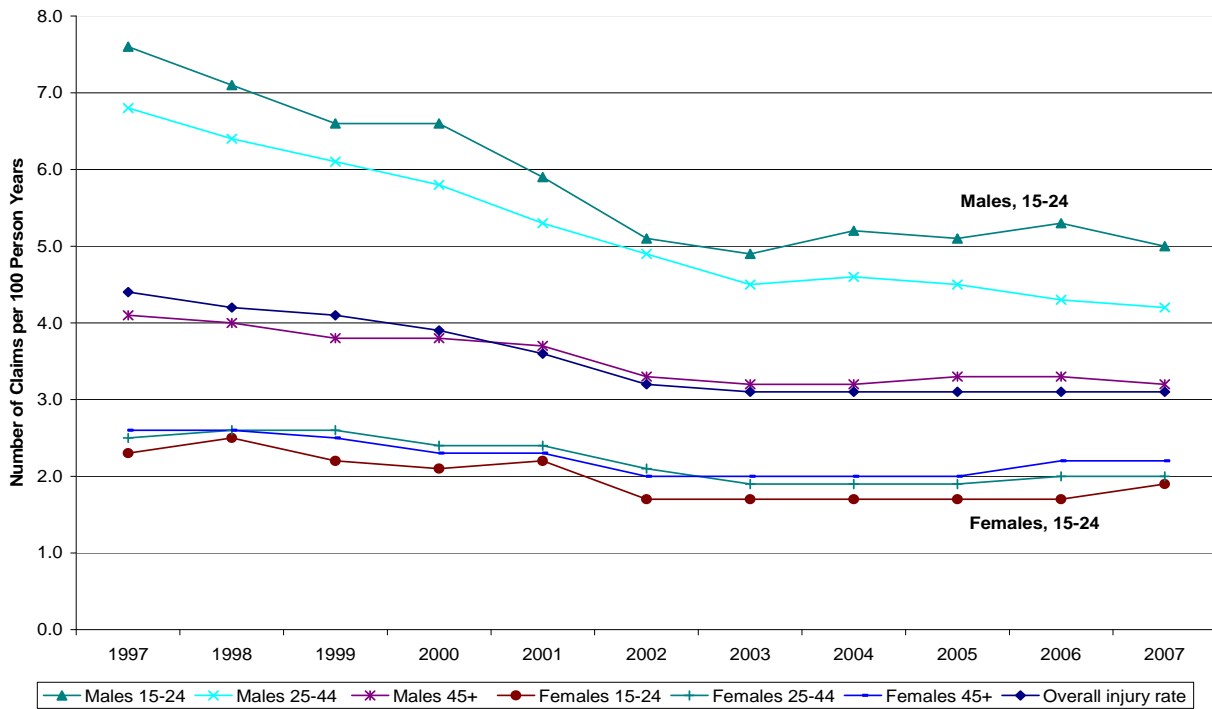


Young Worker (Age 15-24) British Columbia Provincial Overview, 2004–2008

Estimated Injury Rates ^{1,2} by Age and Gender Groups, 1997-2007



Young Worker Time-Loss Claims³ by Region and Year, 2004-2008

Region	2004	2005	2006	2007	2008	2004-2008 Total	2004-2008 %
Fraser Valley ⁴	2,792	3,175	3,253	3,390	3,008	15,618	30%
Greater Vancouver ⁵	2,824	2,868	2,935	3,131	3,043	14,801	28%
Vancouver Island ⁶	1,600	1,657	1,894	2,075	2,006	9,232	18%
Interior ⁷	1,034	1,239	1,410	1,434	1,279	6,396	12%
Prince George and North ⁸	539	609	600	528	527	2,803	5%
Kamloops ⁹	443	482	506	545	486	2,462	5%
Unspecified ¹⁰	250	248	281	275	215	1,269	2%
Total	9,482	10,278	10,879	11,378	10,564	52,581	100%

¹The unit for the injury rate statistic is 'number of claims per 100 estimated person years of employment' where the 'number of claims' are those that received short-term disability, long-term disability or survivor benefits either in the year of injury or in the first quarter of the following year.

²Because of the way Statistics Canada employment data and WorkSafeBC person years are combined, person years by age gender group are approximate.

³Based on STD/LTD/Fatal claims accepted from 2004-2008, regardless of the year of injury.

⁴Surrey, Langley, Coquitlam, and Abbotsford regions

⁵Vancouver, North Vancouver, Burnaby, New Westminster, Richmond, and Delta

⁶Victoria, Nanaimo, and Courtenay regions

⁷Kelowna, Nelson, and Cranbrook regions

⁸Prince George, Fort St. John, and Terrace regions

⁹Kamloops

¹⁰Accepted claims not coded to a region

Young Worker (Age 15-24) British Columbia Provincial Overview, 2004–2008

Young Worker Time-Loss Claims Costs and Days Lost¹¹ by Region (2004–2008)

	Cost	Days Lost
Fraser Valley	\$ 71,318,000	340,300
Greater Vancouver	\$ 84,142,000	358,700
Vancouver Island	\$ 45,507,000	209,700
Interior	\$ 35,363,000	136,400
Prince George & North	\$ 31,702,000	83,000
Kamloops	\$ 15,450,000	52,500
Unspecified	\$ 31,223,000	88,600
Total	\$ 314,705,000	1,269,200

Young Worker Time-Loss Claims by Gender (2004–2008)

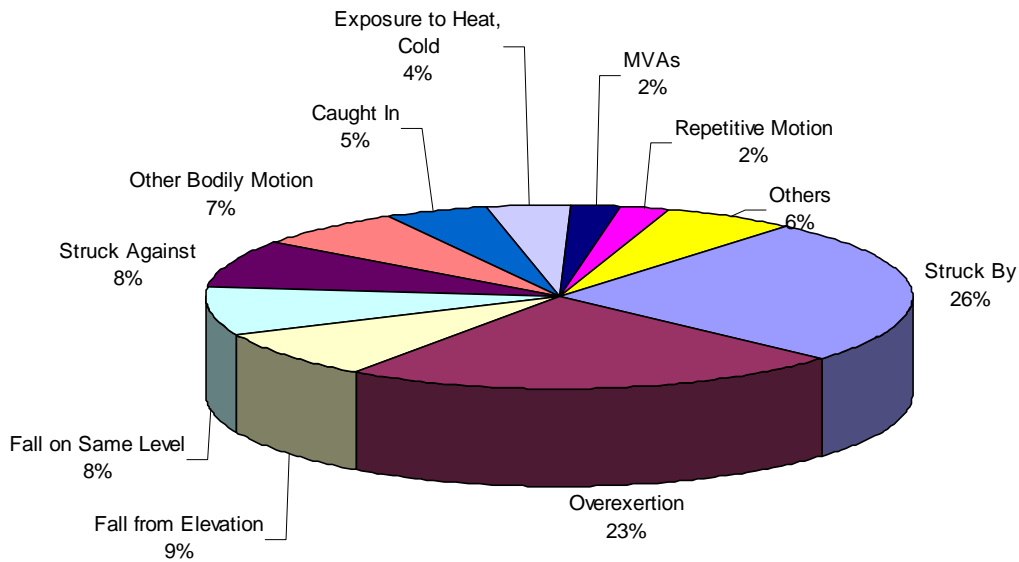
	Male	Female
Fraser Valley	77%	23%
Greater Vancouver	75%	25%
Vancouver Island	70%	30%
Interior	74%	26%
Prince George & North	75%	25%
Kamloops	73%	27%
All Regions	74%	26%

Young Worker Time-Loss Claims by Region and Subsector (2004–2008)

	Subsector				
	First	Second	Third	Fourth	Fifth
Fraser Valley	General Construction (20%)	Retail (17%)	Accommodation, Food and Leisure Services (13%)	Metal and Non-Metallic Mineral Products (11%)	Wood and Paper Products (7%)
Greater Vancouver	Accommodation, Food and Leisure Services (20%)	Retail (18%)	General Construction (18%)	Other services (8%)	Transportation and Related Services (7%)
Vancouver Island	General Construction (22%)	Retail (22%)	Accommodation, Food and Leisure Services (19%)	Other services (6%)	Wood and Paper Products (6%)
Interior	General Construction (21%)	Accommodation, Food and Leisure Services (17%)	Retail (16%)	Wood and Paper Products (9%)	Other services (7%)
Prince George and North	Retail (15%)	Accommodation, Food and Leisure Services (15%)	General Construction (12%)	Wood and Paper Products (12%)	Other services (10%)
Kamloops	Accommodation, Food and Leisure Services (17%)	Wood and Paper Products (15%)	Retail (15%)	General Construction (15%)	Other services (8%)

¹¹ Claims costs paid in the year for all claims regardless of the year of injury and days lost in the year for all claims regardless of the year of injury.

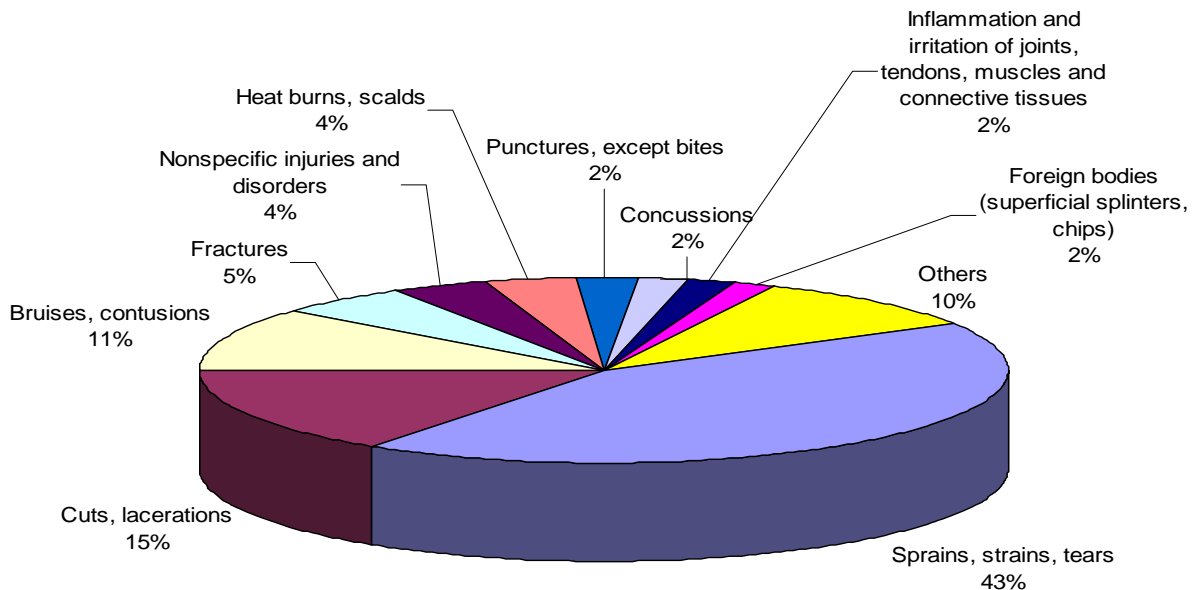
Young Worker Time-Loss Claims by Accident Type (2004–2008) – All BC



Top Three Accident Types by Region (2004-2008)

	Accident Type		
	First	Second	Third
Fraser Valley	Struck By (27%)	Overexertion (23%)	Struck Against (9%)
Greater Vancouver	Struck By (25%)	Overexertion (24%)	Fall from Elevation (9%) Fall on Same Level (9%)
Vancouver Island	Overexertion (25%)	Struck By (24%)	Fall on Same Level (9%) Struck Against (9%)
Interior	Struck By (26%)	Overexertion (22%)	Fall from Elevation (10%)
Prince George & North	Struck By (24%)	Overexertion (19%)	Fall on Same Level (9%)
Kamloops	Struck By (26%)	Overexertion (22%)	Fall from Elevation (9%) Fall on Same Level (9%)

Young Worker Time-Loss Claims by Injury Type (2004–2008) – All BC



Top Three Injury Types by Region (2004–2008)

	Sprains, strains, tears	Cuts, lacerations	Bruises, contusions
Fraser Valley	42%	17%	11%
Greater Vancouver	45%	15%	12%
Vancouver Island	44%	16%	10%
Interior	42%	14%	11%
Prince George & North	39%	13%	10%
Kamloops	40%	15%	10%

Young Worker Serious Injuries¹² (2004–2008)

- There were 11,015 serious injuries for young workers from 2004–2008
- The most common serious injuries include sprains, strains or tears (42%) and fractures (23%)

The Classification Units with the highest number of serious injury claims accepted in this period include:

- Supermarket
- Restaurant, or other dining establishment
- House or Other Wood Frame Construction
- General Retail

¹² A Serious Injury is defined as a claim with an STD, LTD, or Fatal benefit payment in the period consisting of the month of injury or the following 3 months that has at least one of the following: 1) 28 or more STD days lost in the period; 2) Healthcare costs in the period equivalent to 28 days of STD costs; 3) a Fatal benefit paid in the period; 4) one of the 275 ICD9 Medical Diagnosis codes assigned which have been designated as Serious Injuries. The Serious Injury Rate is lagged 3 months to allow for the qualifying payments to accrue. Some Serious Injuries under the ICD9 category are estimated due to uncoded claims.