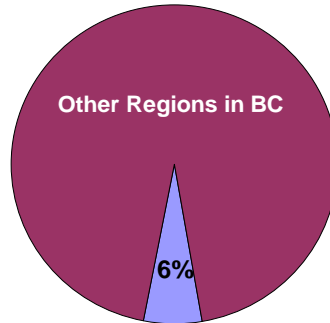
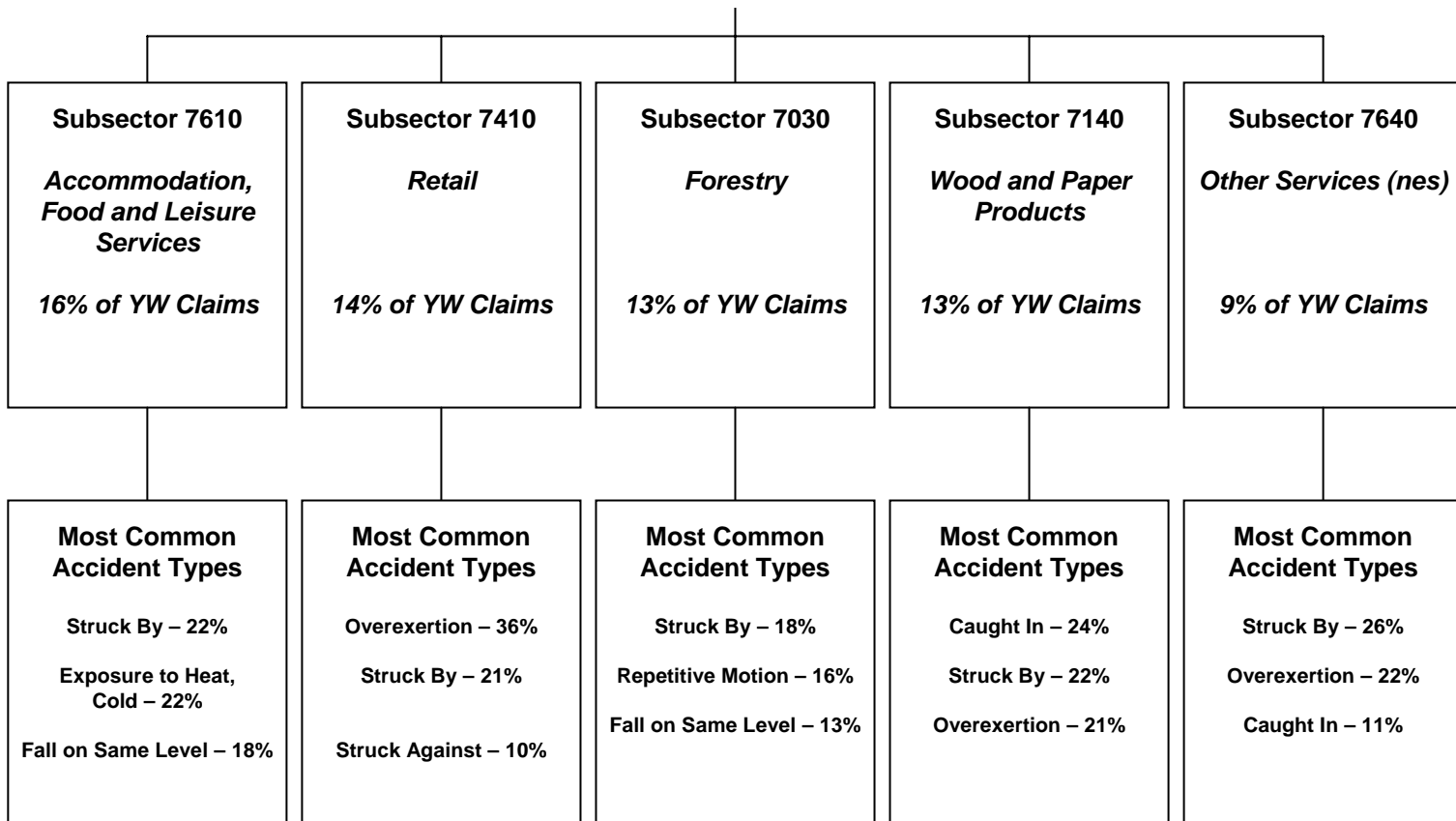


Prince George & North Young Worker (Age 15-24) Claim Hierarchy Tree



Prince George & North (2001-2005)
2,810 Young Worker Time-Loss Claims



Within the Most Common Accident Types shown above:

- “Struck By” represents specific accident types that include “Struck by Falling Object” and “Struck by Slipping Handheld Object”, among others.
- “Overexertion” represents specific accident types that include “Overexertion in Lifting” and “Overexertion in Pulling, Pushing Objects”, among others.
- “Caught In” represents specific accident types that include “Caught in, Compressed by Equipment, Objects, NEC” and “Caught in Running Equipment or Machinery”, among others.

Note: Prince George & North includes Prince George, Fort St. John, and Terrace regions.

Subsectors shown above are the top 5 based on a ranking of young worker time-loss claims volume between 2001 and 2005 for the region.

Prince George & North

Young Worker (Age 15-24) Fact Sheet

Young Worker Time-Loss Claims Accepted Between 2001 and 2005 – Prince George & North

- In Prince George & North, approximately 74% of young worker time-loss claims accepted between 2001 and 2005 relate to males.

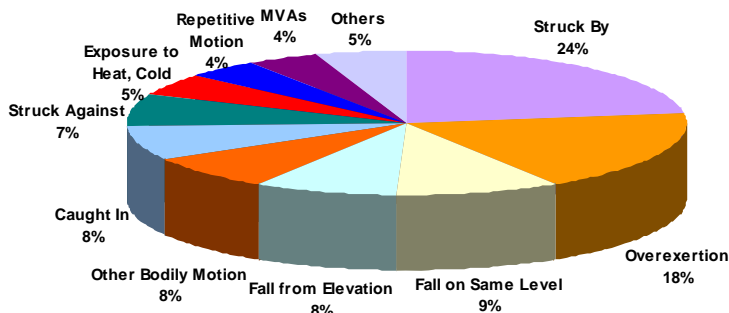
	2001	2002	2003	2004	2005	2001-2005 % of YW for Region
Female - Age 15-24	165	147	136	130	153	26%
Male - Age 15-24	465	363	384	406	454	74%
Unspecified - Age 15-24	2	2		1	2	
Total - Age 15-24	632	512	520	537	609	100%

Young Worker Claim Costs and Days Lost – Prince George & North

- Between 2001 and 2005, approximately \$31,338,000 in claim costs were paid relating to young worker claims for Prince George & North, regardless of the year of injury.
- Between 2001 and 2005, approximately 89,000 work days were lost for young worker claims in Prince George & North, regardless of the year of injury.

Young Worker Claim Characteristics – Prince George & North Overall

Top Accidents in Prince George & North (2001-2005)



Top Injury Types in Prince George & North (2001-2005)

