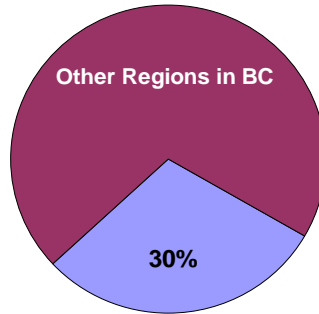
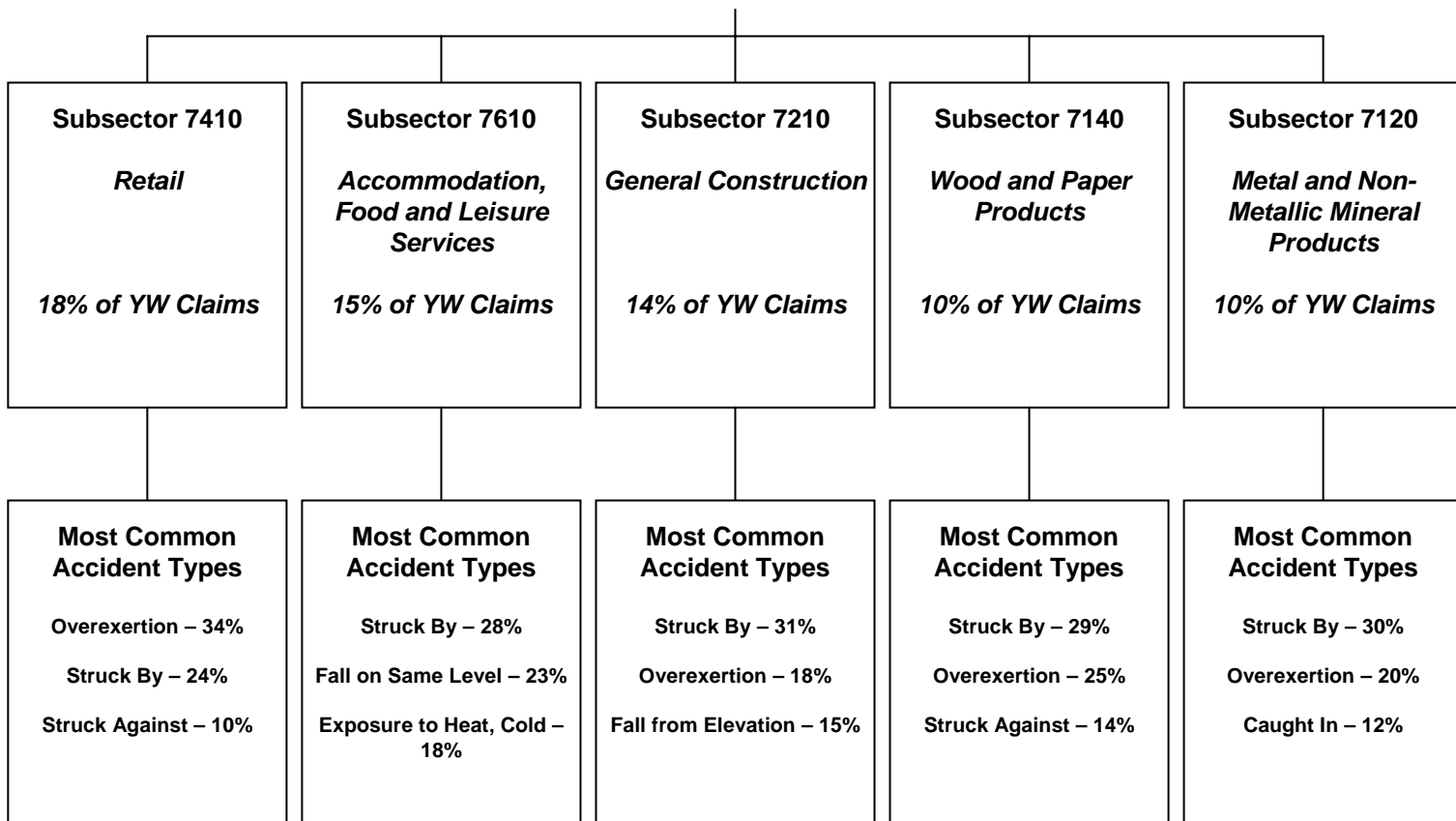


Fraser Valley

Young Worker (Age 15-24) Claim Hierarchy Tree



Fraser Valley (2001-2005)
14,323 Young Worker Time-Loss Claims



Within the Most Common Accident Types shown above:

- “Struck By” represents specific accident types that include “Struck by Falling Object” and “Struck by Slipping Handheld Object”, among others.
- “Overexertion” represents specific accident types that include “Overexertion in Lifting” and “Overexertion in Pulling, Pushing Objects”, among others.
- “Caught In” represents specific accident types that include “Caught in, Compressed by Equipment, Objects, NEC” and “Caught in Running Equipment or Machinery”, among others.

Note: Fraser Valley includes Surrey, Langley, Coquitlam and Abbotsford regions.

Subsectors shown above are the top 5 based on a ranking of young worker time-loss claims volume between 2001 and 2005 for the region.

Fraser Valley

Young Worker (Age 15-24) Fact Sheet

Young Worker Time-Loss Claims Accepted Between 2001 and 2005 – Fraser Valley

- In the Fraser Valley, approximately 76% of young worker time-loss claims accepted between 2001 and 2005 relate to males.

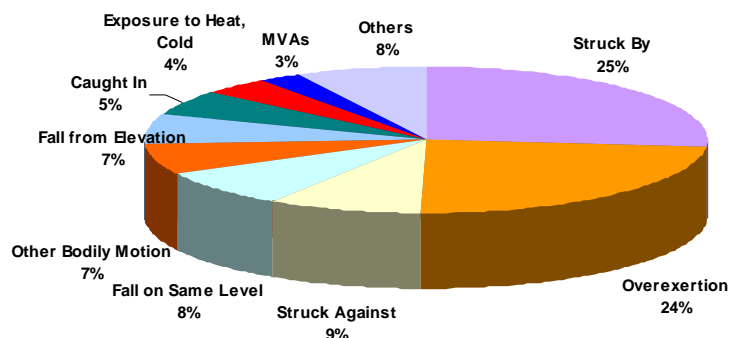
	2001	2002	2003	2004	2005	2001-2005 % of YW for Region
Female - Age 15-24	735	641	638	622	745	24%
Male - Age 15-24	2227	2046	2050	2162	2433	76%
Unspecified - Age 15-24	6	8	4	3	3	
Total - Age 15-24	2968	2695	2692	2787	3181	100%

Young Worker Claim Costs and Days Lost – Fraser Valley

- Between 2001 and 2005, approximately \$57,276,000 in claim costs were paid relating to young worker claims for the Fraser Valley, regardless of the year of injury.
- Between 2001 and 2005, approximately 307,600 work days were lost for young worker claims in the Fraser Valley, regardless of the year of injury.

Young Worker Claim Characteristics – Fraser Valley Overall

Top Accidents in Fraser Valley (2001-2005)



Top Injury Types in Fraser Valley (2001-2005)

