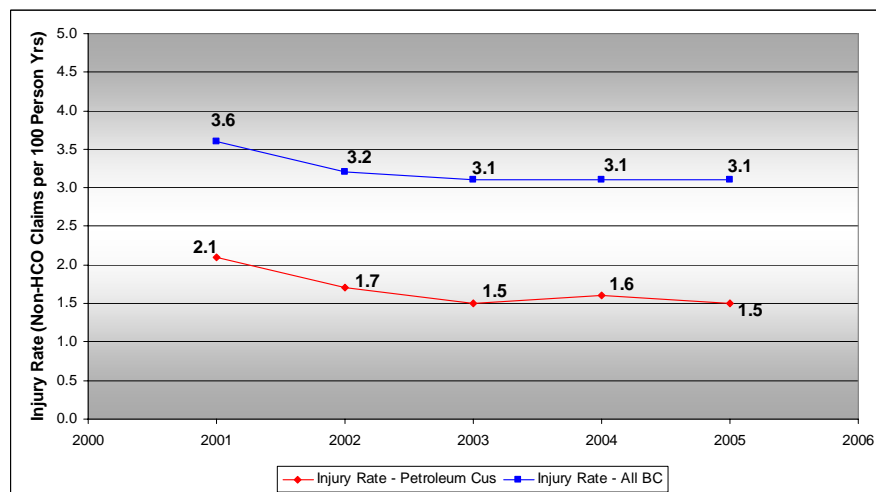


# Petroleum Industry<sup>1</sup>

## Fact Sheet – 2001-2005

The petroleum industry is currently represented by 2,284 active employer-CUs in 12 Classification Units. In 2005, the combined assessable payroll for the industry was approximately \$720 million.

- The injury rate (number of Non-HCO claims per 100 person years) for the petroleum industry remains lower than the injury rate for all BC.



- Between 2001 and 2005, a total of 1,464 STD/LTD/FTL claims were accepted in the petroleum industry.
- Approximately \$56,000,000 in claim costs were paid and 119,500 work days were lost in the petroleum industry during the five year period.
- Between 2001 and 2005, STD duration<sup>2</sup> in the petroleum industry averaged approximately 99 days, about twice the average for all BC.
- 84 ICD9 serious injury claims<sup>3</sup> were accepted during the five year period, 63% and 23% of which are serious fractures and amputations, respectively. Approximately half of serious injuries occurred in CU 704002 (Oil or Gas Drilling) and 721038 (Oil or Gas Pipeline Construction or Repair).
- There were 32 fatal claims accepted in the industry between 2001 and 2005.

<sup>1</sup> For historical representation, the petroleum industry is comprised of the following CUs: 704002, 704003, 704004, 704009, 704010, 704015, 704016, 713018, 713019, 713035, 713036, 721038, 732045, 767005. Note that CU 713019 was split into CUs 713035 and 713036 effective January 1, 2005, and that CU 713035 (Fuel Storage Tank Operation and Fuel Distribution) was retired from the CU structure effective January 1, 2006 with CU 732045 (Fuel Storage Tank Operation and Fuel Distribution) being added to the CU structure effective January 1, 2006.

<sup>2</sup> STD duration is calculated according to the methodology established by the AWCBC, and is based on all STD days paid in the year including days lost in years beyond the year of injury.

<sup>3</sup> ICD9 serious injury claims include claims with the STD/LTD/FTL year between 2001 and 2005, regardless of year of injury, and are based on a list of 165 ICD9 Medical Diagnosis codes used to identify serious injury claims that include major fractures (e.g. skull, spine, pelvis, multiple fractures, etc.), amputations, 3rd degree burns, serious eye injuries, and other serious spinal, head or crushing injuries. ICD9 serious injury claims exclude accepted fatal claims, and the ICD9 serious injury claim count is adjusted to include an estimate for uncoded claims.

## Petroleum Industry<sup>4</sup> Claims Characteristics<sup>5</sup>: 2001-2005

### Top Accident Types, 2001-2005

Accident Type	% of Claims
Struck by object	15%
Overexertion	15%
Fall to Lower Level	12%
Fall on Same Level	10%
Bodily reaction	8%

### Top Natures of Injury, 2001-2005

Nature of Injury	% of Claims
Sprains, strains, tears	38%
Fractures	16%
Bruises, contusions	8%
Cuts, lacerations	4%
Nonspecific injuries and disorders	4%

### Top Body Parts Injured, 2001-2005

Body Part Type	% of Claims
Back, including spine, spinal cord	17%
Leg(s)	13%
Ankle(s)	8%
Finger(s), fingernail(s)	8%
Multiple Body Parts	7%

### Top Sources of Injury, 2001-2005

Source of Injury	% of Claims
Floors, walkways, ground surfaces	20%
Person-injured or ill worker	14%
Highway vehicle, motorized	10%
Building materials-solid elements	8%
Containers-pressurized	5%

### Top Occupation Types, 2001 - 2005

Occupation	% of Claims
Motor Vehicle and Transit Drivers	17%
Primary Production Labourers	14%
Mine Service Workers and Operators in Oil and Gas Drilling	14%
Underground Miners, Oil and Gas Drillers and Related Workers	11%
Trades Helpers and Labourers	10%

### Claims by Age, 2001-2005

Age	% of Claims
15 - 24	20%
25 - 44	53%
45 - 64	24%
65 and over	2%

### Gender, 2001-2005

Gender	% of Claims
FEMALE	4%
MALE	96%

<sup>4</sup> For historical representation, the petroleum industry is comprised of the following CUs: 704002, 704003, 704004, 704009, 704010, 704015, 704016, 713018, 713019, 713035, 713036, 721038, 732045, 767005. Note that CU 713019 was split into CUs 713035 and 713036 effective January 1, 2005, and that CU 713035 (Fuel Storage Tank Operation and Fuel Distribution) was retired from the CU structure effective January 1, 2006 with CU 732045 (Fuel Storage Tank Operation and Fuel Distribution) being added to the CU structure effective January 1, 2006.

<sup>5</sup> Based on coded STD/LTD/FTL claims accepted between 2001 and 2005, regardless of year of injury. Note that, based on the date of report generation, a portion of STD/LTD/FTL claims accepted in 2005 are not yet coded, and the above figures are subject to change.