

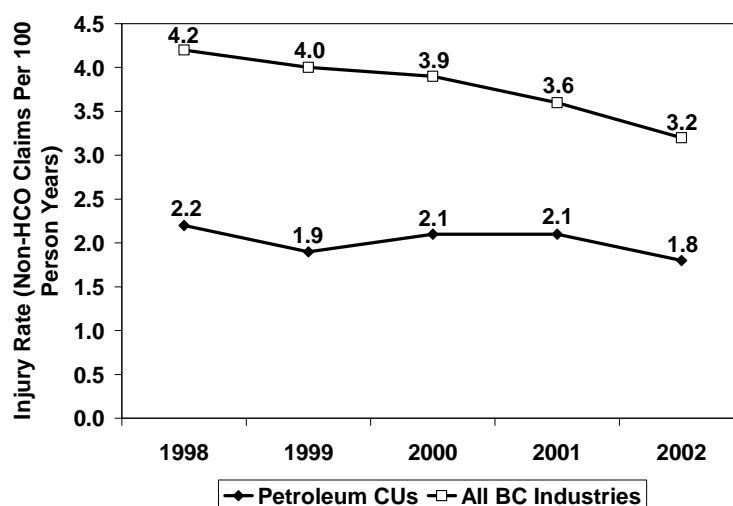
# Petroleum Industry\*

## Fact Sheet – 1998 to 2002

---

The petroleum industry is currently represented by 1,891 active employers in 11 Classification Units\*. In 2002, the combined assessable payroll for the industry was approximately \$478,536,000.

- The injury rate (number of Non-HCO claims per 100 person years) for the petroleum industry decreased slightly over the past five years, and remains lower than the injury rate for all BC.



- Between 1998 and 2002, a total of 1,408 claims were accepted in the petroleum industry.
- Approximately \$46,000,000 in claim costs were paid and a total of 119,350 work days were lost in the petroleum industry during the five year period.
- 65 serious injury claims were accepted during the five year period. Serious injury claims are based on first-paid STD claims. They include claims involving major fractures (e.g., skull, spine, pelvis, etc.), amputations, 3rd degree burns, multiple fractures, and other serious spinal or head injuries that are based on 124 medical diagnosis type ICD9 codes.
- There were 32 accepted fatalities in the industry between 1998 and 2002.

---

\* Petroleum industry is comprised of the following CUs: 704002, 704003, 704004, 704009, 704010, 704015, 704016, 713018, 713019, 721038, and 767005

# Petroleum Industry\*

## Claims Characteristics<sup>1</sup>: 1998-2002

### Top Accident Types, 1998-2002

Accident Type	% of Claims from Total
Overexertion	17%
Struck by object	15%
Fall to Lower Level	13%
Fall on Same Level	10%
Bodily reaction	9%

### Top Injury Types, 1998-2002

Injury Type	% of Claims from Total
Sprains, strains, tears	39%
Fractures	17%
Bruises, contusions	9%
Nonspecific injuries and disorders	5%
Cuts, lacerations	4%

\* Musculoskeletal Injuries (MSI) refers to Overexertion and Repetitive Motion combined.

### Top Body Parts Injured, 1998-2002

Body Part Type	% of Claims from Total
Back, including spine, spinal cord	20%
Leg(s)	15%
Ankle(s)	9%
Finger(s), fingernail(s)	8%
Multiple Body Parts	8%

### Top Source of Injury Types, 1998-2002

Source of Injury	% of Claims from Total
Bodily Motion Or Position Of Injured, Ill Worker	13%
Ground	9%
Floors, Walkways, Ground Surfaces, Uns	6%
Truck, N.E.C.	3%
Truck, Uns	3%

### Claims by Age and Gender, 1998-2002

Age Group	% of Claims from Total
15-24	20%
25-44	59%
45-64	21%
65 and over	0%

Gender	% of Claims from Total
Male	96%
Female	4%

### Top Occupation Types, 1998-2002

Occupation Types	% of Claims from Total
Oil & Gas Drilling, Servicing & Related Labourers: Roughneck, Shakerhand, Service Rig Helper, Roustabout, Observer	8%
Fuel-Oil-Truck Driver	6%
Floorman/Woman - Oil & Gas Wells	6%
Gas Well Driller, Oil Well Driller, Test-Hole Driller - Oil & Gas Wells	6%
Truck Drivers: Transport, Long Haul, Long Distance, Bulk Goods, Tractor-Tailer, Trucker	4%

<sup>1</sup> Based on coded first-paid short term disability claims.

\* Petroleum industry is comprised of the following CUs: 704002, 704003, 704004, 704009, 704010, 704015, 704016, 713018, 713019, 721038, and 767005

Prepared by: Business Effectiveness, March 2004  
 Source: WCB EPDM, Microstrategy; WCB Data Warehouse; WCB Statistical Services; 1998-2002