

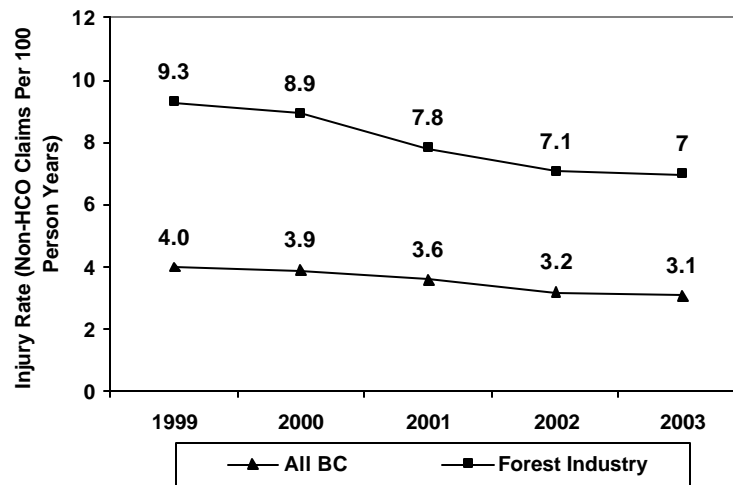
# Forest Industry<sup>1</sup>

## Fact Sheet – 1999 to 2003

---

In 2003 there were 7,037 active, registered employers<sup>1</sup> with a combined assessable payroll of \$1,092,060,168 in the forest industry<sup>1</sup>.

- While the injury rate<sup>2</sup> for the forest industry has decreased over the past five years, it remains approximately 125% higher than the injury rate for all BC.



- Between 1999 and 2003, a total of 11,237 claims were accepted in the forest industry.
- Approximately \$391,308,097 in claim costs were paid in the forest industry during the five year period.
- A total of 805,236 work days were lost in the forest industry during the five year period.
- 518 serious injury claims were accepted during the five year period. They include claims involving major fractures (e.g., skull, spine, pelvis, etc.), amputations, 3rd degree burns, serious eye injuries and other serious spinal or head injuries.
- There were 110 accepted fatalities in the subsector between 1999 and 2003.

<sup>1</sup> forestry subsector 7030 including classification units 732024 (log towing) 732043 (helicopter logging) 732044 (log hauling)

<sup>2</sup> Injury rate is defined as the number of non-health care only claims per one hundred person years of work



WORKERS' COMPENSATION BOARD OF BC



BC Forest Safety Council  
Unsafe is Unacceptable

# Forest Industry<sup>1</sup>

## Claims Characteristics: 1999-2003

### Top Accident Types, 1999-2003

Accident Type	% of Claims from Total
Struck by object	22%
Fall on Same Level	13%
Fall to Lower Level	11%
Overexertion	9%
Bodily reaction	9%

\* Musculoskeletal Injuries (MSI) refers to Overexertion and Repetitive Motion combined.

### Top Injury Types, 1999-2003

Injury Type	% of Claims from Total
Sprains, strains, tears	38%
Fractures	12%
Bruises, contusions	10%
Cuts, lacerations	8%
Nonspecific injuries and disorders	4%

### Top Body Parts Injured, 1999-2003

Body Part Type	% of Claims from Total
Leg(s)	17%
Back, including spine, spinal cord	16%
Finger(s), fingernail(s)	7%
Ankle(s)	7%
Multiple Body Parts	6%

### Top Source of Injury Types, 1999-2003

Source of Injury	% of Claims from Total
Plants, trees, vegetation-not processed	22%
Floors, walkways, ground surfaces	16%
Person-injured or ill worker	15%
Highway vehicle, motorized	7%
Handtools-powered	6%

### Claims by Age and Gender, 1999-2003

Age Group	% of Claims from Total
15-24	15%
25-44	56%
45-64	28%
65 and over	2%

Gender	% of Claims from Total
Male	96%
Female	4%

### Top Occupation Types, 1999-2003

Occupation Types	% of Claims from Total
FALLER, FELLER - LOGGING	15%
TREE PLANTER - FORESTRY	9%
LOGGING TRUCK DRIVER	8%
LOGGING & FORESTRY LABOURERS	6%
BUCKER - LOGGING	4%

1. forestry subsector 7030 including classification units 732024 (log towing) 732043 (helicopter logging) 732044 (log hauling)